

1960

Bulletin of the School of Nursing, 1960-1961

University of Nebraska College of Medicine

Tell us how you used this information in this [short survey](#).

Follow this and additional works at: https://digitalcommons.unmc.edu/bulletin_con



Part of the [History Commons](#), and the [Nursing Commons](#)

Recommended Citation

University of Nebraska College of Medicine, "Bulletin of the School of Nursing, 1960-1961" (1960). *Bulletin of the College of Nursing*. 28.

https://digitalcommons.unmc.edu/bulletin_con/28

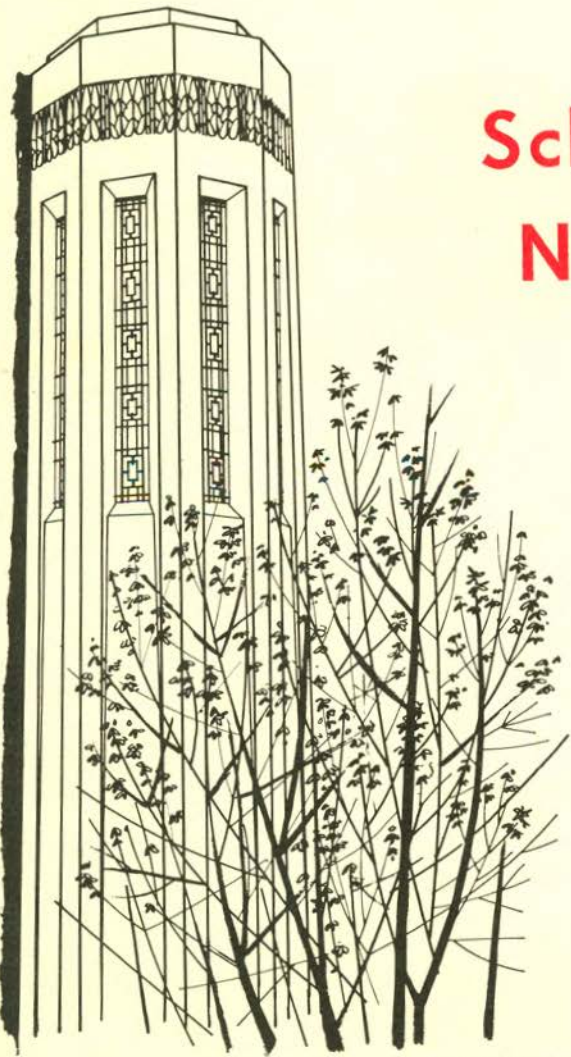
This Book is brought to you for free and open access by the Bulletins and Catalogs at DigitalCommons@UNMC. It has been accepted for inclusion in Bulletin of the College of Nursing by an authorized administrator of DigitalCommons@UNMC. For more information, please contact digitalcommons@unmc.edu.

Dup

Bulletin of

THE UNIVERSITY OF NEBRASKA

School of Nursing



ANNOUNCEMENTS
1960 - 1961

Stanley W. Sawyer

college of medicine
school of nursing
1960-1961

SERIES LXV

MAY 4, 1960

NUMBER 15

Issued 3 times a month in January, February, and March; semi-monthly in April and December; monthly in May, July, August, and November by the University of Nebraska Office of Publications, Administration Building, 14th and R Sts., Lincoln 8, Nebraska. Second-class postage paid at Lincoln, Nebraska.

THE UNIVERSITY OF NEBRASKA
COLLEGE OF MEDICINE

SCHOOL OF NURSING

Calendar for 1960 - 1961

Summer Quarter

June 13, 1960	Summer quarter begins
July 4	Independence Day—holiday
September 5	Labor Day—holiday
September 9	Summer quarter ends

Fall Quarter

September 7-9	Sophomore orientation
September 12	Fall quarter begins
November 24	Thanksgiving—holiday
December 9	Fall quarter ends

Winter Quarter

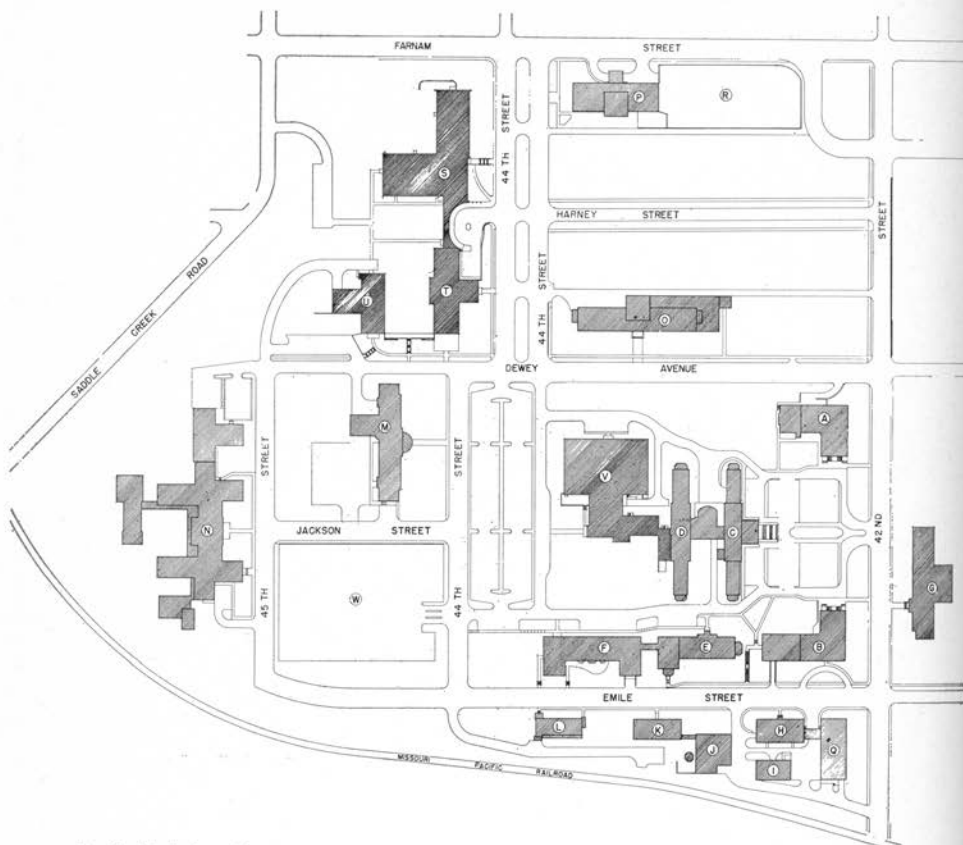
December 12	Winter quarter begins
December 25	Christmas Day—holiday
January 2, 1961	New Year's Day—holiday
January 3	Classes begin
March 10	Winter quarter ends

Spring Quarter

March 13	Spring quarter begins
April 1-3	Easter vacation for sophomores
May 30	Memorial Day—holiday
June 9	Spring quarter ends

UNIVERSITY OF NEBRASKA COLLEGE OF MEDICINE CAMPUS

42nd and Dewey Avenue, Omaha 5, Nebraska



- A. North Laboratory
- B. South Laboratory
- C. Hospital Unit 1
- D. Hospital Unit 2
- E. Nurses' Home 1
- F. Nurses' Home 2
- G. Child Saving Institute
- H. Service Building
- I. Shops
- J. Power House
- K. Boiler House
- L. Research Laboratory

- M. Children's Memorial Hospital
- N. Nebraska Psychiatric Institute
- O. Clarkson Memorial Hospital
- P. Doctor's Building
- Q. Laundry and Warehouse
- R. Parking Garage
- S. J. P. Lord School
- T. C. Louis Meyer Memorial
- U. Hattie B. Munroe Home
- V. Hospital Unit 3
- W. S. W. Parking Area



School of Nursing Building

ADMINISTRATION

The Board of Regents

	<i>Term Expires</i>
J. Leroy Welsh, Omaha.....	January 1961
Clarence E. Swanson, Lincoln.....	January 1961
Frank Foote, Axtell.....	January 1963
J. G. Elliott, Scottsbluff.....	January 1963
B. N. Greenberg, M.D., York.....	January 1965
Richard E. Adkins, Osmond.....	January 1965
John Kent Selleck, Lincoln, Corporation Secretary	

The University

- Clifford Morris Hardin, B.Sc., M.Sc., Ph.D., Chancellor of the University.
 Adam Carlyle Breckenridge, Ph.D., Dean of Faculties.
 James S. Pittenger, B.Sc., Assistant to the Chancellor.
 James Perry Tollman, B.Sc., M.D., Dean of the College of Medicine and Superintendent of the University Hospital.
 James Winfred Benjamin, B.A., M.A., Ph.D., Assistant Dean of the College of Medicine.
 Floyd Hoover, Ph.D., Registrar.
 J. Philip Colbert, B.Sc., M.Sc., Dean of the Division of Student Affairs.

EMERITI FACULTY

- Edna P. Braun**, R.N., Instructor in Public Health Nursing, Emeritus.
Mercedes Breen, R.N., B.S., Assistant Professor of Nursing, Emeritus.
Myra Tucker, R.N., Professor of Nursing, Emeritus.
Vera Warner, R.N., B.S., M.A., Assistant Professor of Nursing, Emeritus.

FACULTY

SCHOOL OF NURSING

- Irma Maurine Kyle**, R.N., B.S., S.M., Director of School and Professor of Nursing.
Clare R. Fleming, R.N., B.S., M.A., Assistant Director of Nursing Education and Assistant Professor of Nursing.
Carol Wilson, R.N., B.A., M.A., Assistant Director of Nursing Service and Assistant Professor of Nursing.
John Andrew Aita (G), Ph.D., M.D., Associate Professor of Neurology and Psychiatry.
Beverly Birch, R.N., B.Sc., Instructor in Psychiatric Nursing.
Maxine Cook, R.N., B.Sc., Assistant Professor of Nursing.
Grace Elizabeth Dearden, R.N., B.Sc., Instructor in Fundamentals.
Violet DuBois, B.Sc., M.P.H.A., Lecturer and Consultant in Public Health.
Joan M. Ellison, B.S., M.N.S., Assistant Professor of Nutrition.
Gwendolyn Finn, R.N., B.Sc., Instructor in Obstetrical and Gynecological Nursing.
Kenneth L. Fitch, B.S., M.S., Ph.D., Assistant Professor of Anatomy.
Kathryn Grace Frandsen, R.N., B.S., Assistant Professor of Obstetrical and Gynecological Nursing.
Albert Edward Freed, B.Sc., M.D., Associate in Internal Medicine.
Sol L. Garfield (G), B.Sc., M.A., Ph.D., Associate Professor of Medical Psychology—Chief Psychologist.
Gordon Everett Gibbs (G), A.B., M.A., Ph.D., M.D., Professor of Pediatrics (Chairman of Department).
Alice Gorman, R.N., B.S., Instructor in Psychiatric Nursing—Clinical Division.
Robert Leslie Grissom (G), B.Sc., M.D., Professor of Internal Medicine (Chairman of Department).
Lorraine Hedman, R.N., B.Sc., Instructor in Psychiatric Nursing—Clinical Division.
Janice Hensel, R.N., B.Sc., Instructor in Surgical Nursing—Clinical Division.
Roy Groves Holly (G), B.Sc., Ph.D., M.D., Professor of Obstetrics and Gynecology (Chairman of Department).
Marjorie Hook, R.N., B.Sc., M.P.S., Ed.D., Associate Professor of Nursing—Director of Graduate Program in Psychiatric Nursing.
Mary Lou House, R.N., B.Sc., Instructor in Surgical Nursing—Clinical Division.
Herbert Haynes Humphreys, Ph.D., Associate Professor of Medical Psychology.
Howard Beeman Hunt (G), A.M., M.D., Professor of Radiology (Chairman of Department), Professor of Rehabilitation and Physical Medicine.
Herbert Paul Jacobi (G), B.Sc., M.Sc., Ph.D., Professor of Biochemistry (Chairman of Department).
Norma Grace Johnson, R.N., B.Sc., M.P.N., Assistant Professor of Nursing—Mental Health.
Elizabeth Ann Kentopp, R.N., B.Sc., Instructor in Obstetrical Nursing—Clinical Division.
John Stephens Latta (G), Ph.D., Professor of Anatomy (Chairman of Department).
Elaine Mansfield, R.N., B.Sc., M.P.N., Associate in Psychiatric Nursing, Chief Research Nurse.
Harry Webber McFadden (G), A.B., M.D., Professor of Microbiology (Chairman of Department).
Archibald Ross McIntyre (G), Ph.D., M.D., Professor of Physiology and Pharmacology (Chairman of Department).
Emily McKamy, A.B., M.A., Instructor in Public Health.
Merle McNeil Musselman (G), B.Sc., M.D., Professor of Surgery (Chairman of Department).
Helen Riza, R.N., B.Sc., Instructor in Medical Nursing—Clinical Division.
Shirley Russell, R.N., B.Sc., Instructor in Surgical Nursing—Clinical Division.
Sybil Sawinsky, B.Sc. in Ed., Counselor and Activities Director.
Gertrude Scott, R.N., Clinical Instructor in Practical Nursing.
V. Lyle Von Riesen, Ph.D., Assistant Professor of Microbiology.
Violet Myrtle Wilder, A.B., M.A., Ph.D., Associate Professor of Biochemistry.
Lola Williams, R.N., B.Sc., M.A., Assistant Professor of Medical Nursing.
Cecil Legriell Wittson (G), B.Sc., M.D., Professor of Neurology and Psychiatry (Chairman of Department).
Joanne Yeager, B.Sc., Instructor in Nutrition.

(G) Indicates members of Graduate College.

COLLEGE OF MEDICINE

(Adjunct Faculty)

- Dean Craig Affleck, Ph.D., Assistant Professor of Medical Psychology.
Olin James Cameron, M.Sc., M.D., Professor of Dermatology (Chairman of Department).
William Rudolph Hamsa, B.Sc., M.D., Professor of Orthopedic Surgery (Chairman of Department).
Bernice Martin Hetzner, B.A.L.S., M.A., Associate Professor of Library Science.
John Hewitt Judd, B.Sc., M.D., Professor of Ophthalmology (Chairman of Department).
Frank Klabenes, B.Sc., M.D., Associate Professor of Otorhinolaryngology (Chairman of Department).
Leroy William Lee, B.Sc., M.Sc., M.D., Professor of Urology (Chairman of Department).
Clarence Austin McWhorter, B.Sc., M.D., Associate Professor of Pathology.
George Francois Pinne, M.D., Assistant Professor of Dermatology and Syphilology.
Evelyn Claryne Schellak, A.B., M.Sc., S.A., Director of Medical Social Work.

COLLEGE OF ARTS AND SCIENCES

- Walter Ernest Militzer, Ph.D., Dean of the College of Arts and Sciences, Director of the School of Fine Arts, Professor of Chemistry.
Alan P. Bates, Ph.D., Professor of Sociology (Chairman of Department).
Donald Warren Dysinger, Ph.D., Professor of Psychology (Chairman of Department).
James E. Miller, Jr., Ph.D., Professor of English (Chairman of Department).

COLLEGE OF AGRICULTURE—DEPARTMENT OF HOME ECONOMICS

- Florence E. McKinney, Ph.D., Professor of Home Economics (Chairman of Department).
Josephine E. Brooks, Ph.D., Associate Professor of Home Economics (Food and Nutrition).

NURSING SERVICE

- Emma Mathilda Brock, R.N., Instructor in Clinical Nursing and Afternoon Supervisor of Nursing Service.
Sandra Jean Brodie, R.N., B.Sc., Instructor and Head Nurse in Obstetrical Nursing—Clinical Division.
Anne Laurine Burke, R.N., B.S., Instructor, Student and Personnel Health.
Adeline Cornelius, R.N., Instructor and Head Nurse in Out-Patient Department—Clinical Division.
Ruth Denkinger, R.N., Instructor and Head Nurse in Pediatrics—Clinical Division.
Leila M. Epstein, R.N., Instructor in Psychiatric Nursing, Acting Chief Nurse, Psychiatric Institute.
Helen Erikson, R.N., Instructor and Head Nurse in Receiving Room—Clinical Division.
Neavola Hendrickson, R.N., Instructor and Head Nurse in Psychiatric Nursing—Clinical Division.
Esther Hill, R.N., Instructor and Head Nurse in Psychiatric Nursing—Clinical Division.
Wallie Schon Holaway, R.N., Instructor and Head Nurse in Psychiatric Nursing—Clinical Division.
Alice Lundgren, R.N., Instructor and Head Nurse in Central Service—Clinical Division.
Velma Mason, R.N., Associate in Nursing and Assistant in Nursing Service.
Elizabeth Peterson, R.N., B.Sc., Assistant Instructor and Assistant Head Nurse in Surgical Nursing—Clinical Division.
Josephine Pinckley, R.N., B.Sc., Instructor and Head Nurse in Surgical Nursing—Clinical Division.
Bobbie Ann Powell, R.N., B.Sc., Assistant Instructor and Assistant Head Nurse in Obstetrical Nursing—Clinical Division.
Margaret Pullman, R.N., Instructor in Clinical Nursing and Night Supervisor of Nursing Service.
Donna Rhoades, R.N., Instructor and Coordinator of In-Service Education.
Donna D. Sack, R.N., B.Sc., Instructor and Head Nurse in Psychiatric Nursing—Clinical Division.
Zada Shane, R.N., B.Sc., Assistant Instructor and Assistant Head Nurse in Out-Patient Department—Clinical Division.
Nancy Smith, R.N., B.Sc., Instructor and Head Nurse in Surgical Nursing, Operating Room—Clinical Division.
Fern Easter Stoker, R.N., Instructor and Head Nurse in Psychiatric Nursing—Clinical Division.
Patsy Lee Swogetinsky, R.N., B.Sc., Instructor and Head Nurse in Psychiatric Nursing—Clinical Division.

Lois Temme, R.N., B.S., Instructor and Head Nurse in Psychiatric Nursing—Clinical Division.

Elinor Vahl, R.N., B.Sc., Instructor and Head Nurse in Medical Nursing—Clinical Division.

Diana Whitney, R.N., B.Sc., Instructor and Head Nurse in Surgical Nursing—Clinical Division.

Barbara Anne Winfield, R.N., B.Sc., Instructor and Head Nurse in Surgical Nursing—Clinical Division.

ASSISTANTS IN THE SCHOOL OF NURSING

Marlene Arthur, Secretary.

Lawrence Cappiello, B.Sc., M.Sc., D.H.&S.—Public Relations and Graduate Activities.

Ruth Duggins, Secretary—Nursing Service.

Angela Eichler, Assistant Director of Nurses' Residence.

Era Fullwood, Secretary

Duane Johnson, B.Sc. in M., Hospital Administration, Administrator of University Hospital.

Mary Cecelia Kenney, Assistant Director of Nurses' Residence.

Lillian Sundberg, Director of Nurses' Residence.

COMMITTEES

Student Admissions, Advancement, and Scholarship

Curriculum

Library

Policy

Research

Guidance and Counseling

Public Relations

Graduate Education

SCHOOL OF NURSING

The University of Nebraska School of Nursing was established in 1917. Its original three-year program granting a diploma was expanded to a five-year program in 1922, so that students in nursing who wished to do so might fulfill the requirements for the Bachelor of Science degree. The present four-year program, begun in 1950, grants a Bachelor of Science degree with a major in nursing. The 1956 graduating class was the first in which all members were candidates for the degree of Bachelor of Science in Nursing.

PHILOSOPHY AND OBJECTIVES OF THE SCHOOL

The School's educational program is based on the philosophy that nursing education should combine general and professional preparation from which the student derives an understanding of human needs and relationships. Since spiritual and emotional satisfactions no less than the satisfaction of physical needs are essential to wholesome, effective living, the program emphasizes the social sciences as well as the physical sciences. It is important that the student develop the skills and understanding which come from working with people of varied backgrounds, if she is to assume the responsibilities which society requires of the nurse.

In key with this philosophy, the specific objectives of the School of Nursing are:

1. To provide for carefully selected young women a professional program of instruction and experience which will stimulate their critical thinking and enable them to give skillful and sympathetic nursing care in the individual pursuit of their calling.
2. To prepare the way for continued growth of personal and social ideals and attributes expected of a professional person.
3. To develop and strengthen a genuine sense of responsibility as a citizen in the community.
4. To prepare nurses who, with supervision, are qualified for beginning staff positions, except in public health.

FACILITIES FOR INSTRUCTION AND PRACTICE IN NURSING

The facilities for instruction and practice in nursing include the classrooms and laboratories of the School of Nursing and the College of Medicine, the University Hospital, the University Dispensary, the Nebraska Psychiatric Institute, and the library of the College of Medicine.

Members of the School of Nursing faculty and the faculty of the College of Medicine give instruction in the various subjects outlined in the School of Nursing curriculum

The University Hospital.—The University Hospital, where the students obtain clinical experience, is on the College of Medicine campus. Since its faculty constitutes the hospital staff, medical assistance in the clinical instruction of student nurses is readily available. The hospital, which has a capacity of 201 beds, is general in character and accommodates an active service in all its departments. The service includes facilities for clinical instruction and practice in medicine, surgery, obstetrics, gynecology, orthopedics, pediatrics, psychiatry, neurology, radiology, urology, and the treatment of communicable diseases and eye, ear, nose, and throat conditions.

The operating-room service, which averages about 200 operations a month, provides valuable experience for the students in surgical technic.

The admitting rooms and diet kitchens also are utilized for the instruction and experience of the students.

The University Dispensary.—Ambulatory patients representing all phases of medicine are cared for in the University Dispensary. In this clinical facility the student nurse comes to understand the economic and social factors related to disease and to appreciate the need for continuity of patient care.

The Nebraska Psychiatric Institute.—Located on the College of Medicine campus just west of Children's Hospital, the Nebraska Psychiatric Institute is a 96-bed hospital administered jointly by the Board of Control and the Board of Regents. A research pavilion, which provides 14 additional beds, is presently under construction.

Student nurses receive instruction and clinical experience in all types of psychiatric nursing for a 13-week period. Supervised experience is provided in the acute and convalescent adult services, in the treatment area, and in such specialized departments as Occupational Therapy, Recreational Therapy, Research, Children's Ward, and Day-Patient Service.

In addition, students attend and participate in interdisciplinary conferences through which they gain appreciation and understanding of the psychiatric team's role in the treatment, care, and rehabilitation of the mentally ill. Preventive aspects also are stressed.

Library.—The library of the College of Medicine contains more than 73,000 bound volumes and 25,000 pamphlets and reprints devoted to medicine and nursing as well as more than 1,100 standard medical and nursing periodicals. There is provision for the addition to the library of important books, pamphlets, and periodicals on subjects of special interest to nursing, and also on such allied subjects as social sciences, psychology, and education.

The library is located in a wing of the hospital. Books also may be withdrawn at any time upon demand from the University Library at Lincoln, containing 580,000 volumes, and from the Omaha Public Library.

RESIDENCE

The School of Nursing Building is a new addition on the College of Medicine Campus. It contains the School's educational offices and classrooms and living accommodations for the student nurses.

The attractively furnished student rooms are double, with individual dressing-room facilities. In addition to a large general lounge and recreation room, there are a lounge area, a kitchenette, and a laundry and pressing room on each student floor.

ALUMNAE ASSOCIATION

The University of Nebraska School of Nursing Alumnae Association was organized by the graduates of the classes of 1920 and 1921 at the first annual banquet, May 21, 1921. The Association, whose present active membership is 450, provides many services and activities for students in the School.

A Student Loan Fund, established in 1927, is available to deserving junior and senior students in the School of Nursing. Individual applications up to \$100 are considered by the Committee on Student Loans. In 1939 the use of the Loan Fund was extended to graduates, who may apply for aid up to \$200.

The Myra Tucker Library was established in 1946 to honor Miss Tucker, who served for 29 years as Assistant Director of the School of Nursing. The library's purpose is to provide source material, chiefly for study and research, for the student nurses. At regular intervals current books and periodicals are added to the collection.

In 1947 the Charlotte Burgess Graduate Scholarship was established as a fitting tribute to Miss Burgess, founder of the School of Nursing and director for 29 years. This scholarship of \$100, awarded at the annual banquet and homecoming of the Alumnae Association, is given to a graduate who is outstanding in professional interest and scholarship, in professional and social activities, and in her promise of professional growth. The first award of this scholarship was made on May 24, 1947.

The Nurse Reporter, official publication of the Alumnae Association, is issued quarterly to all active members. Other activities of the Alumnae Association include an Endowed Bed, established in 1932; the selection of the school cape in 1933; and the furnishing of a room in the Children's Hospital to honor Miss Josephine Chamberlin in 1946.

An Educational Fund, established in 1951, provides one or more scholarships annually to cover the cost of tuition fees and textbooks of one or more students who have been in the School of Nursing two quarters or more. This fund also provides for assistance in sending students and graduate nurse delegates to state and national nursing meetings and for the purchase of reference books for the Ward Libraries for nurses in the hospital divisions.

STUDENT AND PERSONNEL HEALTH SERVICE

The Student and Personnel Health Service, maintained by the College of Medicine, has supervision of the students' health. The Health Service is available for medical treatment of minor illnesses, medical advice and health conferences. Should hospital care be needed, the student may be cared for at University Hospital, or with family advice another hospital may be chosen. The student is responsible for the costs of hospitalization. Hospitalization insurance is available under the University group insurance program.

The University Hospital is not responsible for any pathological conditions contracted by the student while serving in the various departments.

All entering students are required to pass satisfactorily a physical examination, and are given a yearly examination thereafter and a final examination before leaving the school. A schedule of immunizations is carried out, as well as such tests as are appropriate in careful health supervision.

PROFESSIONAL PROGRAM

Applicants for admission to the School of Nursing must meet the entrance requirements of the University of Nebraska.

Graduates of accredited high schools should present 13 units from senior high schools (grades 10, 11, 12) or 16 units from four-year high schools. An entrance unit indicates the work of five recitations a week, of forty to fifty minutes each, for at least thirty-six weeks. In laboratory courses an entrance unit indicates three recitations a week and two double periods of laboratory each week.

Applicants are required to present the following units of credit and sequence of high school courses:

English	3-4 units
*Foreign Language	2 units
Algebra	1 unit
Geometry or General Mathematics	1 unit
Social Science	1-2 units
Natural Sciences	1-2 units
(Chemistry, Physics, Biology)	

Electives to complete required number of units.

* Recommended but not required for B.S. in Nursing

Applicants for admission to the School of Nursing must complete one full year at the University of Nebraska or at another accredited college, fulfilling during this time the specified first-year requirements. Since some colleges do not offer all of the courses required in the first year of the nursing program, it is urgently recommended that the applicant choose a college in which she will be able to complete her basic preparation without deficiencies.

Application for admission for the freshman year should be made directly to the college chosen. Application for transfer to the School of Nursing should be made prior to college, or during the fall semester. School of Nursing application forms may be obtained from the Director of the University School of Nursing, 42nd and Dewey Avenue, Omaha 5, Nebraska.

All students entering the University of Nebraska must take the University pre-registration examinations. Those students enrolled at colleges other than the University of Nebraska must take these examinations in Lincoln or Omaha, or by individual arrangement at the college in which they are enrolled, during the spring term of the first year.

When all of the necessary forms and transcripts have been filed with the School of Nursing, the Committee on Admissions will consider the credentials of each individual before final acceptance. Upon enrollment in the School of Nursing or professional portion of the course, the student becomes a candidate for the degree of Bachelor of Science in Nursing.

Students who wish to transfer from other schools of nursing are accepted only after the approval of the State Board of Nursing and of the Committee on Admissions.

COLLEGIATE PROGRAM

Four-Year Degree Program.—The four-year program leading to the degree of Bachelor of Science in Nursing requires four calendar years (one of academic and three of professional education). During the two semesters and summer of the first year the student must complete, either at the University of Nebraska or some other accredited college, the prescribed freshman year of the nursing curriculum, as follows:

Biology or Zoology	6 hours
Biology 1 and 2 or Zoology 1 and 2 at University of Nebraska	
Zoology preferred.	
Chemistry	3-5 hours
Chemistry 1 or 3 depending upon placement examinations.	
English Composition	6 hours
Foods and Nutrition	3 hours
Home Economics 41 at the University of Nebraska.	
History	6 hours
History 1 and 2, 7 and 8, 9 and 10, at University of Nebraska.	
Introduction to Sociology	3 hours
Marriage and the Family	3 hours
Sociology 53 and 125 at the University of Nebraska.	
Fundamentals of Speech	3 hours
Speech 9 at the University of Nebraska	
Introduction to Professional Nursing	2 hours
Physical Education	2 hours
Electives	3 hours

Introductory and Developmental Psychology, English 21 and 22, and Sociology 161 are given during the three years on the Omaha campus. The student should not register for these courses or their equivalent during her college experience, as this would interfere with the continuity of the integrated academic and professional curriculum.

At the beginning of the second calendar year the student begins her professional curriculum on the College of Medicine campus in Omaha. She will then have sophomore standing, provided she has completed at least 32 hours of the required courses as outlined above.

CURRICULUM

Freshman Year			
College Campus			
<i>First Semester</i>	<i>Credits</i>	<i>Second Semester</i>	<i>Credits</i>
Zoology I or Biology I	3.0 hrs.	Zoology II or Biology II	3.0 hrs.
English Composition	3.0 hrs.	English Composition	3.0 hrs.
Chemistry I	5.0 hrs.	History (1, 7, 9)	3.0 hrs.
Sociology 53	3.0 hrs.	Home Economics 41	3.0 hrs.
Physical Education 51	1.0 hrs.	Sociology 125	3.0 hrs.
		Intro. to Nursing 60	2.0 hrs.
		Physical Education 52	1.0 hrs.
<i>Summer Session</i>			
History (2, 8, 10)	3.0 hrs.		
Speech 9	3.0 hrs.		
Elective	3.0 hrs.		

Sophomore Year*			
Omaha Campus			
<i>Fall</i>	<i>Credits</i>	<i>Winter</i>	<i>Credits</i>
Anatomy 51	1.5 hrs.	Anatomy 51	1.5 hrs.
Physiology 51	1.5 hrs.	Physiology 51	1.5 hrs.
Chemistry 51	3.5 hrs.	Medical Science 72	2.0 hrs.
Found. of Nsg. 65	2.5 hrs.	Psychology 51	3.0 hrs.
Intro. to Pt. Care 61	3.0 hrs.	Found. of Nsg. 65	1.5 hrs.
		Intro. to Pt. Care 61	3.5 hrs.
<i>Spring</i>			
	<i>Credits</i>	<i>Summer</i>	
Microbiology 71	3.0 hrs.	Medical-Surgical Nsg. 182**	6.5 hrs.
Pharmacology 71	1.5 hrs.		
Diet Therapy 155	1.5 hrs.		
Foundations of Nursing 65	2.0 hrs.		
Medicine & Surgery 181	3.0 hrs.		

Junior Year			
<i>Fall</i>	<i>Credits</i>	<i>Winter</i>	<i>Credits</i>
Medical-Surgical Nsg. 182**	5.0 hrs.	Medical-Surgical Nsg. 182**	3.5 hrs.
English Literature 21	3.0 hrs.	Gynecology Nursing 177**	3.0 hrs.
Foundations of Nursing 163	2.0 hrs.	English Literature 22	3.0 hrs.
<i>Spring</i>			
	<i>Credits</i>	<i>Summer</i>	
Medical-Surgical Nsg. 183**	7.0 hrs.	Obstetrics 190**	8.0 hrs.
Developmental Psychology 151.....	3.0 hrs.		

Senior Year			
<i>Fall</i>	<i>Credits</i>	<i>Winter</i>	<i>Credits</i>
Pediatrics 191**	8.0 hrs.	Psychiatry 195	8.0 hrs.
Sociology 161	3.0 hrs.	Foundations of Nursing 173	1.5 hrs.
<i>Spring</i>			
	<i>Credits</i>	<i>Summer</i>	
Foundations of Nursing 164	1.5 hrs.	Seminar 183	3.0 hrs.
Comprehensive Nursing 189**	5.0 hrs.		
Public Health 189	1.5 hrs.		

* Point of entrance for transfer students.

** Taught during the block of experience in the particular department.

GRADES AND CONTINUATION IN THE SCHOOL

Successful completion of each semester's program is determined by the quality of the student's daily work and by examinations given at the end of each course.

Passing grade in the School of Nursing is 4 (70). A grade of "I" is given when work is of passing grade but, for good reason, has not been completed on time. An "I" must be removed within three months unless special extension of time is granted. A failing grade in any subject may be removed only by repeating the course.

Because of the complicated schedules of theory and clinical experience, irregular class schedules for students can be arranged only by special permission of the faculty. Before a student is allowed to advance from one semester to the next, subjects which are prerequisites to the following semester's work must have been satisfactorily completed.

The faculty of the School of Nursing reserves the right to recommend, at any time, the withdrawal of a student whose personality, health, conduct, or scholastic standing makes it inadvisable for her to remain in the School of Nursing.

EXPENSES

At the University of Nebraska the following is a realistic estimate of costs on a semester basis while on the Lincoln campus:

*Tuition AND all fees	\$120
Room and board (dormitory)	300
Books, instructional supplies	35
Laundry, dry cleaning, etc.	45
Entertainment, recreation	100

Per semester estimate	\$600

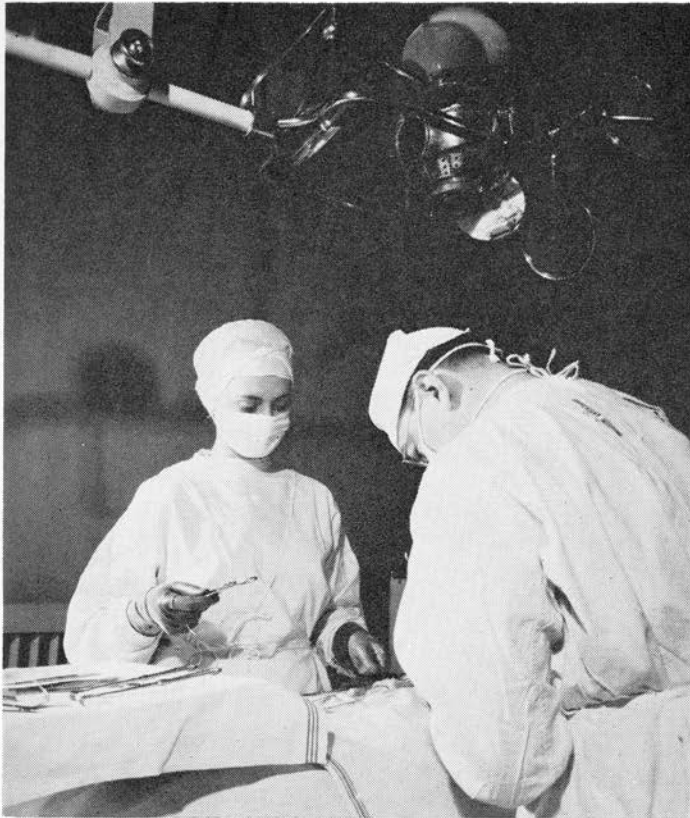
A student's right to classification as a resident for purposes of registration in a state educational institution must be determined under the provisions of Sec. 85-502, Revised Statutes of 1943, 1955 Cumulative Supplement.

Any student who has been classified as a nonresident student who believes he can qualify as a resident may secure from the University Comptroller a resident application form and, when it is properly filled out, file such form with the Comptroller for review and ruling. The form must be filed in the Office of the Comptroller *before the end of the ninth week* of the term for which the tuition fee was charged. For the summer session, the deadline is the *end of the third week*.

The exact wording of the state law on residency is given on the resident application form.

A fee of \$10.00 must accompany the application for admission of all nonresident applicants. This is nonrefundable unless the applicant is eligible for admission and enrolls in the University of Nebraska. Upon enrollment, the \$10.00 deposit is applied toward the applicant's tuition fees.

* Tuition and fees for students residing out of Nebraska total \$240. All fees and tuition are subject to change.



All aliens, regardless of residence, but excluding persons who have commenced their naturalization process, are charged an application fee of \$5.00 by the University of Nebraska. This fee is nonrefundable; however, if the applicant enrolls, this fee will apply toward payment of tuition and fees. This fee should accompany the application for admission.

For further information regarding fees for the freshman year, the applicant is referred to the bulletin of the college she elects to attend.

At the School of Nursing, a blanket fee of \$180.00 a year is charged each student, resident or nonresident. One-half must be paid at the time of registration, and the balance must be paid not later than February 1. The blanket fee includes matriculation, registration, medical, laboratory, library, diploma and course fees. It does not include the cost of uniforms, books, or the miscellaneous fees listed below. In case of undue usage of materials or breaking or loss of equipment other than that allotted to each course, and because of negligence on the part of the student, a penalty charge will be levied, based on the fair value of such material and equipment so lost or broken.

A student who withdraws from the University during any term for which she is registered may be entitled to claim a refund of a portion of her fees. A refund schedule is available in the Finance Office.

Miscellaneous Fees: (Additional to the blanket fee)—Omaha Campus	
Late registration, minimum	\$ 3.00
For each additional week after the first week of classes	1.00
Transcript, each copy (first copy free)	1.00
Degree in absentia	10.00
Special examination, each course	1.00
Books for three years, approximately	125.00
Achievement examinations	15.00
Subscriptions for professional magazines	6.00
Uniforms, approximately	90.00
The Board of Regents allows a scholarship of \$50.00 for the cost of uniforms to each regularly registered student nurse during her first semester at the School of Nursing.	
School cape (optional)	30.00
Cap and gown at graduation	4.00
No charge is made for board, room, and uniform laundry.	

All registered nurses who are taking courses in the Graduate Program in Psychiatric Nursing, but who do not want a Bachelor's degree, will be registered as students at large in the School of Nursing, and will be charged the same course fees as graduate students.

Checks on personal accounts will be accepted only when written for the exact amount of the fees. Remittance by mail should be by draft, money order, or cashier's check. Do not send coin or money except by registered mail. It is impossible to trace money lost in the mail, and the University officials cannot be held responsible for such loss.

FINANCIAL AID

A number of civic and state organizations are interested in making financial assistance available to nursing students. A prospective student should get in touch with any one of the following: American Red Cross, American Legion Auxiliary, Kiwanis Club, Rotary Club, Nebraska Federation of Women's Clubs, Business and Professional Women's Clubs. Frequently, a church with which the applicant is affiliated offers scholarships. Some of these carry certain stipulations that the applicant attend a designated church college, while others have no restricting clauses as to their use.

Similar aid is available through School of Nursing sources after the student has enrolled in the hospital portion of the course. Among these sources are the Nurses' Alumnae Association, the Medical Faculty Wives' Club, the Omaha Quota Club.

Loans are available from several permanent University trust funds, and from funds made available by the National Defense Education Act of 1958. Additional information regarding scholarship and loan facilities may be obtained through the Dean of the Division of Student Affairs, Administration Building 207, University of Nebraska, Lincoln 8, Nebraska.

SCHOOL OF NURSING SCHOLARSHIPS

Sarah D. Gillespie D.U.V.S.S. Fund

Donor: Sarah D. Gillespie, Tent No. 7, D. U. V.

Qualifications: Nursing student who is a direct lineal descendant of a Union veteran

Value: \$100

Apply to the College of Medicine Student Assistance Committee

The University of Nebraska Upperclass Regents Scholarship

Donor: The University of Nebraska through its Board of Regents

Qualifications: Sophomore, junior and senior students in the School of Nursing. Awards made on basis of high scholarship

Value: Seven at \$100 each

Apply to Dean of the College of Medicine

Awarded by the Committee on General Scholarship Awards

SPECIAL REGULATIONS

Marriage.—Applicants to the School of Nursing will be limited to unmarried women. Student nurses who marry before the completion of their course will be asked to withdraw from the School of Nursing, except those who are married within the last six months prior to their graduation and who have previously secured the written consent to marry from their parents or guardians and from the Director of the School of Nursing.

Uniforms.—Student nurse uniforms are distinctive articles of dress prescribed by the School of Nursing and are the property of the School. The uniform will be worn in the manner prescribed and under the conditions specified by the Director of the School of Nursing.

Vacation, Sick Leave, and Absence.—During the college year, vacations correspond to the scheduled college vacations. During the three years on the College of Medicine campus, four weeks of vacation are granted annually. Six holidays or their equivalent are allowed each year. Twenty-one days of sick leave are allowed during the three years. All illness days in excess of twenty-one, as well as all absent days, must be made up at the end of the course.

RECREATIONAL AND SOCIAL FACILITIES

During the freshman year in college, nursing students may participate in any of the college activities open to other students and for which they are eligible.

At the School of Nursing many recreational facilities are available. Each class is fully organized, with student officers and a faculty class sponsor, and social programs are planned both for individual classes and for the student body as a whole. Representative of these are informal teas, class dinners and picnics, Junior-Senior Banquet, Parent-Daughter Banquet, and all-school dances. There is a student choir from which selected members participate in the University of Nebraska Ivy Day and sing in the annual presentation of The Messiah. The Nurses' Alumnae Association and the Medical Faculty Wives' Club also assist in making the social and home life attractive.

Many community facilities, either for sports or for the furtherance of cultural interests, also are available.

The Student Council, with both student and faculty representation,

exercises a general supervision over the all-student activity program and makes recommendations toward the formulation of school policies.

The School of Nursing is not affiliated with any religious denomination or sect, but all nurses are urged to continue a participation in the religious program of their selected church. Branches of the Christian Nurses' Fellowship and Westminster Fellowship offer additional opportunity for religious activity.

REQUIREMENTS FOR GRADUATION

The degree of Bachelor of Science in Nursing is granted by the Board of Regents of the University of Nebraska to students who have satisfactorily completed the requirements as outlined in the Four-Year Combined Academic and Professional Program.

If a student wishes to take two years of college prior to the clinical part of the nursing program, the requirement of 40 semester hours credit in specified prenursing subjects will remain the same as that for the four-year program. Such a course will, however, enable her to *elect* a wider range of general academic subjects in her preprofessional curriculum.

If she wishes to obtain a B.A. or B.Sc. degree from the College of Arts and Sciences, she must meet the *group*, and *major* and *minor*, requirements of that college. She must also earn a minimum of 40 credits in courses numbered above 100.

STATE ACCREDITATION

The School is accredited by the State Board of Nursing. Upon successful completion of the course, graduates of the School are eligible to take the National State Board Test Pool Examinations for licensure in Nebraska. As registered nurses they are eligible for registration in any state whose regulations permit their endorsement, and for membership in the Alumnae Association, district, state and national organizations, and in the American National Red Cross. Before a graduate nurse may become a registered nurse she must successfully pass the State Board examinations.

DESCRIPTION OF COURSES

Course numbers 1-99 indicate freshman and sophomore level; 100-199, junior and senior level; 200-399, graduate level.

BASIC COURSES

Biological and Physical Sciences

- 1.-2. **Zoology or Biology** (6.0 hrs.)
See College of Arts and Sciences bulletin.
51. **Anatomy** (3.0 hrs.) Dr. Latta, Dr. Fitch and Staff.
Lectures and laboratory are designed to give the student a fundamental knowledge of the structure of the human body.
51. **Physiology** (3.0 hrs.) Dr. McIntyre and Staff
Lectures, demonstrations, and laboratory contribute to the study of the function of the human body.
71. **Microbiology** (3.0 hrs.) Dr. McFadden and Staff
This course deals with the fundamental principles of microbiology with special emphasis on the common pathogenic organisms, the sources and modes of infection, and the methods of prevention of the common infectious diseases. Laboratory work includes bacteriological technic, with emphasis on practical problems of asepsis, disinfection, and isolation.
1. **Chemistry** (5.0 hrs.)
See College of Arts and Sciences bulletin.
51. **Chemistry** (3.5 hrs.) Dr. Jacobi, Dr. Wilder and Staff
A study of the fundamental principles of inorganic and organic chemistry and the application of these principles to physiology, nutrition, pharmacology, and the clinical subjects of nursing.

Humanities

- 3.-4. **English Composition** (6.0 hrs.)
See College of Arts and Sciences bulletin.
9. **Speech** (3.0 hrs.)
See College of Arts and Sciences bulletin.
- 21.-22. **Types of British and American Literature** (6.0 hrs.)
See College of Arts and Sciences bulletin.

Social and Behavioral Sciences

- 1.-2., 7.-8., 9.-10. **History** (6.0 hrs.)
See College of Arts and Sciences bulletin.
53. **Sociology** (3.0 hrs.)
See College of Arts and Sciences bulletin.
125. **Sociology** (3.0 hrs.)
See College of Arts and Sciences bulletin.
161. **Sociology** (3.0 hrs.)
See College of Arts and Sciences bulletin.
51. **Psychology** (3.0 hrs.) Dr. Garfield
(Comparable to Psychology 70 given by Department of Psychology. Credit will be accepted in the College of Arts and Sciences should the student transfer from the College of Medicine.)
Fundamental principles of behavior, maturation, learning, motivation, emotion, perception, abilities.
151. **Developmental Psychology** (3.0 hrs.) Dr. Humphreys
(Comparable to Psychology 189 in the Department of Psychology. Credit will be accepted in the College of Arts and Sciences should the student transfer from the College of Medicine.)
Development of human behavior during the entire life span of the individual.

Medical Sciences

71. **Pharmacology** (1.5 hrs) Dr. McIntyre and Staff
A study of drugs with emphasis on the nature, action and therapeutic uses, toxicology, precautions in administration, and the therapeutic effects desired.
72. **Introduction to Medical Science** (2.0 hrs.) Dr. McWhorter and Staff
A general survey of the field of medical science planned to interpret the changes occurring in organs and tissues during the transition from health to disease; to describe the scientific methods used in attacking the problems of disease; to emphasize the importance of preventive medicine.

Nutrition

41. **Home Economics** (3.0 hrs.)
See College of Agriculture bulletin.
155. **Diet Therapy** (1.5 hrs.) Miss Ellison and Mrs. J. Yeager
A course concerned with the application of the principles of nutrition to therapy. Experience is given in the preparation of selected food items required in the modification of the normal diet to meet the therapeutic needs and in the preparation of infant formulas. Teaching in the out-patient department is included.

Physical Education

52. **Physical Education.** Miss Sybil Sawinsky
Physical education activities selected to develop skills, interests, and appreciations for constructive recreation and to help improve body coordination.

Medical and Surgical Nursing

181. **Medical and Surgical Conditions** (3.0 hrs.) Miss L. Williams, Dr. R. Grissom, Dr. M. M. Musselman, Dr. A. E. Freed
A series of lectures designed to give the student a knowledge of the etiology, symptoms and therapeutics of medical and surgical conditions.
182. **Medical and Surgical Nursing** (15.0 hrs.) Miss L. Williams, Miss M. L. House, Miss H. Riza, Mrs. S. Russell
Patient-centered classes, clinical conferences, demonstrations, nursing care studies, selected patient-care assignments and outpatient department are employed to develop knowledge and skill in the nursing care of medical and surgical patients.
183. **Medical and Surgical Nursing** (7.0 hrs.) Miss L. Williams, Miss J. Hensel
Lectures, conferences, demonstrations, and clinical practice in medical and surgical asepsis and in emergency nursing.

Maternal and Child Health

177. **Gynecology** (3.0 hrs.) Mrs. R. Frandsen and Staff; Dr. R. G. Holly and Staff
Lectures, clinics, ward conferences, and selected patient care assignments are utilized for the study of gynecological nursing. Included are conditions involving infections, tumors, functional disorders, and obstetrical injuries.
190. **Obstetrics** (8.0 hrs.) Mrs. R. Frandsen and Staff; Dr. R. G. Holly and Staff
Lectures, clinics, ward conferences, and supervised experience are given. Emphasis on the anatomy and physiology of pregnancy, the management of labor, obstetrical emergencies and complications; prenatal and postpartum nursing care; and the social and public health aspects of obstetrical nursing.
191. **Pediatrics** (8.0 hrs.) Dr. G. E. Gibbs, Dr. D. Smith
Lectures, clinics, demonstrations, conferences, and clinical experience with emphasis on the well child; the principles of nursing care of the ill child; and the public health aspects of pediatric nursing.

Psychiatry

195. **Psychiatry** (8.0 hrs.) Miss B. Birch and Staff; Dr. C. L. Wittson and Staff
Lectures, clinics, demonstrations, conferences, and clinical experience are the means of presenting the etiology, clinical manifestations, and therapeutic and preventive measures related to the care of the mentally ill.

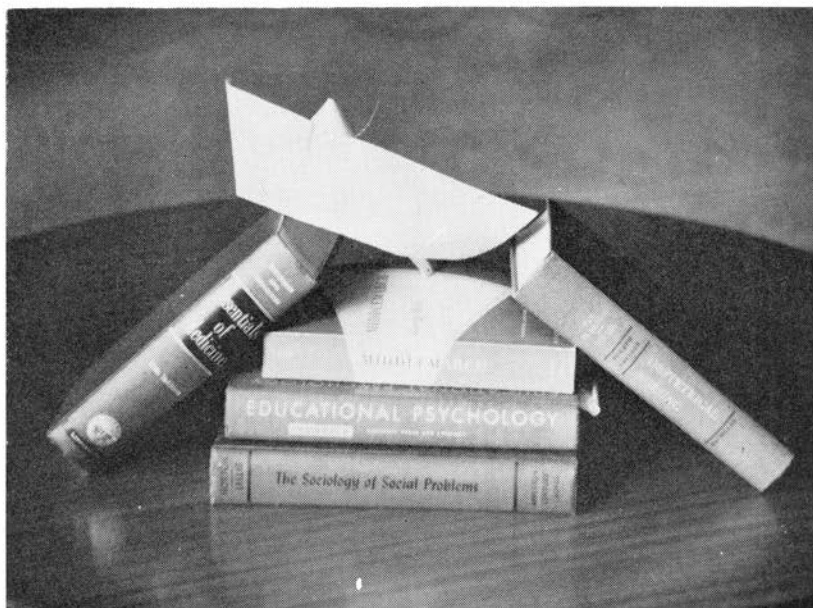
Public Health

189. **Public Health** (1.5 hrs.) Mrs. McKamy
Social and public health aspects are emphasized in all courses. This course is a series of lectures to emphasize the continuity of nursing care through public health and community agencies. The role of the public health nurse is discussed. (An eight-week experience in a public health agency can be arranged upon application by the student.)

PROFESSIONAL NURSING COURSES

General Nursing

60. **Introduction to Professional Nursing** (2.0 hrs.) Miss Fleming
An orientation to nursing with emphasis upon the attitudes and concepts basic to nursing.
61. **Introduction to Patient Care** (6.5 hrs.) Miss L. Williams, Miss G. Dearden and Staff
An introduction to patient care with emphasis on the general supportive, environmental, symptomatic and therapeutic nursing. This course is designed to emphasize the understanding of the scientific principles of nursing technics, the understanding of the patient as an individual, and an introduction to the nurse's role in health teaching and conservation.
65. **Foundations of Nursing** (6.0 hrs.) Miss Kyle, Miss Birch, Mrs. McKamy
Consideration is given to the adjustment of the student to nursing. This includes physical and mental health aspects as well as an introduction to public health concepts. The historical background of nursing is studied in the latter part of the course.
163. **Foundations of Nursing** (2.0 hrs.) Miss Kyle and Staff
A continued study of professional adjustments within nursing with emphasis on personal and interpersonal relationships with an introduction to research methods.
164. **Foundations of Nursing** (1.5 hrs.) Miss C. Wilson
This is an introductory course in the principles of ward management, administration, and leadership. Emphasis is placed on the principles, philosophy, and dynamics of administration rather than on the development of specific skills.
173. **Foundations of Nursing** (1.5 hrs.) Miss Kyle
This course is designed for the advanced student to acquaint her with the responsibilities of the graduate nurse, the opportunities available, the professional organizations and their significance, and the current trends in nursing.
182. **Seminar** (3.0 hrs.) Staff
Discussions and studies related to total patient care. Problem solving involving principles and knowledge from all clinical areas.
189. **Comprehensive Nursing** (5.0 hrs.) Miss Fleming
This course is designed for the advanced student to gain experience in the utilization and application of knowledge and skills acquired in the planning, execution, and evaluation of nursing care.





**The
Florence Nightingale Pledge**

I solemnly pledge myself before God and in the presence of this assembly to pass my life in purity and to practice my profession faithfully. I will abstain from whatever is deleterious and mischievous, and will not take or knowingly administer any harmful drug. I will do all in my power to maintain and elevate the standard of my profession, and will hold in confidence all personal matters committed to my keeping and all family affairs coming to my knowledge in the practice of my calling. With loyalty will I endeavor to aid the physician in his work, and devote myself to the welfare of those committed to my care.



ROSTER OF STUDENTS

CLASS OF 1960

Atkinson, Sandra	Norfolk
University of Nebraska 1956-1957 Wayne State Teachers College 1957	
Barnard, Kathryn	Omaha
University of Omaha 1956-1957	
Behrens, Marilyn	Wahoo
University of Nebraska 1956-1957	
Christensen, Mary	Casper, Wyoming
University of Nebraska 1956-1957	
Cosand, Marilyn	Cheyenne, Wyoming
University of Nebraska 1955-1956	
Gensler, Margaret	Fort Morgan, Colorado
McKendree College 1955-1956 University of Nebraska 1957	
Govaerts, Mary	Broken Bow
University of Nebraska 1955-1957	
Grasmick, Clare	Lincoln
University of Nebraska 1955-1957	
Hinds, Margaret	Marysville, Kansas
Kansas University 1955-1956 Nebraska Wesleyan University 1956-1957	
Holscher, Verna	Cook
Nebraska Wesleyan University 1956-1957	
Horn, Carmen	Grand Island
Kearney State Teachers College 1956-1957	
Isom, Verlyn	Allen
Wayne State Teachers College 1956-1957	
Jepsen, Gayle	Papillion
University of Nebraska 1955-1957	
Jorgensen, Ann	Miles City, Montana
Christian College 1956-1957 McCook Junior College 1957	
Leach, Marilyn	Omaha
University of Omaha 1956-1957	
Lysinger, Nancy	Sargent
University of Nebraska 1955-1957	
Martin, Karen	Hyannis
Chadron State Teachers College 1956-1957	
Millsap, Donna	Berwyn
University of Nebraska 1955-1957	
Osterthum, Lois	Creston
Midland College 1956-1957	
Redmond, Katherine	Norfolk
University of Nebraska 1956-1957 Wayne State Teachers College 1957	
Scheffler, Betty	Omaha
University of Omaha 1956-1957	
Sorensen, Sandra	Hardy
University of Nebraska 1956-1957	
Sorenson, Karen	Moorehead, Iowa
University of Nebraska 1956-1957	
Warren, Nancy	Omaha
University of Omaha 1956-1957	
Wiater, Elizabeth	Columbus
University of Nebraska 1956-1957	

CLASS OF 1961

Breslow, Harriette	University of Nebraska 1957-1958	Omaha
Caldwell, Miriam	University of Nebraska 1957-1958	Lincoln
Colgan, Kathryn	Kearney State Teachers College 1957-1958	Kearney
Comstock, Charlotte	University of Nebraska 1957-1958	Bayard
Foust, Mary	Wayne State Teachers College 1957-1958	Fremont
Funk, Connie	University of Nebraska 1957-1958	Atkinson
Iseman, Patricia	Sioux Falls College 1956-1958	Sioux Falls, South Dakota
Jackson, Lois	Phillips University 1957-1958	Nebraska City
Kavanagh, Karen	University of Omaha 1957-1958	Omaha
Kikens, Maija	University of Nebraska 1957-1958	Glenwood, Iowa
Kollmorgen, JoAnn	University of Nebraska 1957-1958	Snyder
Liebsack, Anita	Norfolk Junior College 1957-1958 University of Nebraska 1958	Norfolk
Mankin, Beverly	University of Nebraska 1957-1958	Aurora
Mason, Sandra,	University of Nebraska 1957-1958	Aurora
Mayne, Sharon	University of Omaha 1957-1958	Omaha
McCoy, Sharon	Creighton University 1956 University of Omaha 1957-1958	Omaha
Mowrey, Gloria	University of Nebraska 1957-1958	Wilcox
Misa, Aija	University of Nebraska 1957-1958	Lincoln
Murphy, Kathryn	Nebraska Wesleyan University 1957-1958	Wahoo
Murray, Katherine	Doane College 1957-1958	Beatrice
Orr, Carol	University of Nebraska 1956-1957	Lisco
Scheer, Sally	Midland College 1956-1957 University of Omaha 1957-1958	Omaha
Schindler, Norma	University of Nebraska 1957-1958	Missoula, Montana
Soucek, Peggy	University of Omaha 1957-1958	Omaha
Swan, Betty	McCook College 1957-1958	McCook
Terry, Patricia	University of Omaha 1957-1958	Omaha

Thoreen, Lynn	University of Nebraska 1957-1958	Lexington
Tsuji, Grace	University of Omaha 1957-1958	Omaha
Walton, Wilma	University of Omaha 1957-1958	Omaha

CLASS OF 1962

Baker, Lael	University of Nebraska 1958-1959	Ralston
Behrends, Delores	Northwest Missouri State 1957-1959	Wiota, Iowa
Brunke, Judith	University of Nebraska 1958-1959	Plainview
Crabill, Helen	University of Nebraska 1958-1959	Ralston
Froscheiser, Judith	University of Nebraska 1958-1959	Lincoln
Farrell, Ellen	Chadron State Teachers College 1958-1959	Chadron
Gowler, Carmen	University of Nebraska 1958-1959	Norfolk
Griffith, Genevieve	University of Nebraska 1958-1959	Pisgah, Iowa
Hamilton, Laura Jo	Wayne State Teachers College 1958-1959	Wayne
Hammond, Dawn	University of Omaha 1958 Norfolk Junior College 1959 Wayne State Teachers College 1959	Norfolk
Hobbs, Jacqueline	University of Nebraska 1958-1959	Omaha
Hoge, Karen	University of Nebraska 1958-1959	Scribner
Holben, Delores	State University of Iowa 1958-1959	Logan, Iowa
Ilg, Barbara	University of Nebraska 1958-1959	Lincoln
Janssen, Linda	Midland College 1958-1959 University of Nebraska 1959	Hooper
Johnson, Carolyn	Chadron State Teachers College 1958-1959	Mitchell
Kaspar, June	University of Nebraska 1958-1959	Prague
Kidd, Margaret	University of Nebraska 1958-1959	Omaha
Kilday, JoAnne	Nebraska Wesleyan University 1958-1959 University of Nebraska 1959	Palmer
Lueking, Mary	University of Nebraska 1958-1959	Atlanta
Lytle, Janet	University of Nebraska 1958-1959	Lincoln
Marcum, Deanna	University of Omaha 1955-1956	Omaha

Marrett, Margaret	University of Nebraska 1958-1959	Omaha
Marshall, Judith	University of Nebraska 1958-1959	Grand Island
Miller, Mary Ann	Midland College 1958-1959 University of Nebraska 1959	Fremont
Norris, Linda	Doane College 1958-1959	Weeping Water
Osten, Marla	University of Nebraska 1958-1959	Creston
Peterson, Marilee	University of Omaha 1958-1959	Omaha
Pollock, Mary	University of Nebraska 1958-1959	Beatrice
Remmers, Karen	Peru State Teachers College 1958-1959 University of Nebraska 1959	Auburn
Rice, Judith	University of Nebraska 1958-1959 Wayne State Teachers College 1959	Norfolk
Robertson, Patricia	Norfolk Junior College 1958-1959 University of Nebraska 1959	Madison
Totten, Carole	Midland College 1958-1959 University of Nebraska 1959	Fremont
Walker, Rae Jean	Doane College 1958-1959	Norfolk
Werner, Julie	Doane College 1958-1959	Grand Island

STUDIES IN PSYCHIATRIC NURSING AND CONCEPTS OF HUMAN RELATIONS

FOR GRADUATE NURSES THE GRADUATE PROGRAM

The University of Nebraska is in a strategic position to offer a clinical specialization program of graduate studies in psychiatric nursing. Such a program necessarily includes provisions for appropriate clinical experiences relating to the promotion of mental health and the prevention and treatment of mental and emotional illness. Thus, rather than the preparation of a nurse for a specific position, the program is focused on the elements of effective nursing as the central core of varied patterns of teaching, administration, and research. The research, by collaboration and co-operation with related disciplines, takes the form of a continuing analysis of nursing care and the effective communication of such care to associates, students, patients, and others. Seminars, workshops, and field instruction provide opportunities for achieving adequate understanding of behavior dynamics.

Interdisciplinary faculty, opportunities for teaching and research, and excellent physical facilities are available from the School of Nursing of the College of Medicine, the Graduate College, and the Nebraska Psychiatric Institute and its associated institutions and agencies.

The School of Nursing offers a four-year basic collegiate program which includes a course in psychiatric nursing at the Nebraska Psychiatric Institute. This provides a graduate-nurse practice field for the direction of basic students and further study and experimentation involves the integration of the psychological aspects of patient care in the total nursing curriculum.

The Nebraska Psychiatric Institute is part of the University's medical center. It is operated jointly by the Board of Regents and the Board of Control and offers adequate treatment facilities for the care of selected patients with varying types and degrees of mental illness. The floor space for administration, teaching, and research purposes approximates that for inpatient, outpatient, and day patient treatment services, with special areas for children, adults, and the aged. The well-equipped library, numerous class and conference rooms, tape recorders, one-way mirrors, and closed-circuit television contribute to effective teaching. In addition to a variety of opportunities for clinical education in all related psychiatric disciplines, short seminars, workshops, and longer courses are available for general medical practitioners, nurses, and social workers as well as programs of public education for non-medical persons such as teachers, ministers, and welfare workers.

Thus, a graduate student in psychiatric nursing has an opportunity to participate in varied types of interdisciplinary team activities in practice fields which provide opportunities for experimentation in the direction of effective nursing care of patients with varied degrees and types of mental disorders. Education of nurses in psychiatric nursing specialization is selective rather than inclusive and provides experiences in the comprehensive and skilled care of patients rather than specialization in nursing education or administration. However, the art of communicating clinical skills through appropriate methods of teaching, supervision, and administration is a necessary part of clinical specialization, with research, writing, teaching, and consultation services the concomitant functions.

A well-planned field study (equivalent to 9 q.h.cr.) is an integral part

of the graduate program. This is planned by careful evaluation of the background and interest of each student, is preceded by an appropriate program of studies, and involves collaboration by the University faculty, field representative, and the student.

Candidates for the degree of Master in Psychiatric Nursing must have completed an approved professional program in nursing, hold a Bachelor's degree from a recognized university or college, and must have met the general requirements for admission to the Graduate College. Evidence will need to be furnished regarding the student's personal qualifications for psychiatric nursing.

The program for the degree includes a minimum of 45 quarter hours of approved course work, and, in addition, the successful completion of a field study of approximately one quarter's duration in an approved institution.

A limited number of federal stipends from the National Institute of Mental Health is available to qualified students.

COURSES IN PSYCHIATRIC NURSING AND RELATED SUBJECTS

The courses are offered through the School of Nursing and the Graduate College of the University of Nebraska.

Courses for undergraduate students may be taken for credit in colleges and universities which will accept them as electives.

The following courses are offered for undergraduate credit only:

- 103. **Workshop on Human Relations in Clinical Nursing** (2 q.h.cr.)
- 104. **Workshop on Dynamics of Human Relations in Nursing** (2 q.h.cr.)
- 105. **Workshop on Dynamics of Teaching** (2 q.h.cr.)
- 106. **Workshop on Dynamics of Administration** (2 q.h.cr.)

The following courses are offered for graduate and undergraduate credit:

- 301. **Foundations of Human Behavior**
- 302. **Developmental Psychology**
- 303. **Behavior Problems of Children**
- 304. **Introduction to Social Group Work**

The following courses are offered for graduate credit only:

- 351. **Seminar in Psychiatric Nursing**
- 352. **Field Instruction in Psychiatric Nursing**
- 353. **Research Methods**
- 354. **Interdisciplinary Communication in Psychiatry**
- 355. **Basic Psychodynamics**

APPLICATION PROCEDURE

Prerequisites for Undergraduate Courses: Graduation from an approved school of nursing, including six semester hours in psychology.

Prerequisites for Graduate Courses: Graduation from an approved school of nursing, a Bachelor's degree from a recognized university or college, and the ability to meet the general requirements for admission to the Graduate College.

Procedure: Applications are made to the Director of Graduate Studies in Psychiatric Nursing, 602 South 44th Avenue, Omaha, Nebraska. For graduate study, three copies of the formal applications must be accompanied by an official record or transcript of the basic course in professional nursing and the college credits leading to the Bachelor's degree.

TIME FOR REGISTRATION

Registration will be accomplished during the first week of each quarter.

A fee of \$3 is charged for registration after the first week unless excused by the Director.

GRADUATE FEES*

All students who are legal residents of Nebraska and who carry a full schedule (12 or more hours) in any quarter will pay a blanket fee of \$80.00 per quarter. Nonresident students will pay a blanket fee of \$160.00 per quarter.

Resident students who originally register for less than 12 hours a quarter will be charged at the rate of \$6.67 for each hour up to and (if courses are added later) including the twelfth hour. Hours thereafter may be added free of charge.

A change of registration fee of \$2.50 is charged in addition to the blanket fee for any changes made in the original registration.

Nonresident students who register for less than 12 hours a quarter will be charged at the rate of \$13.34 for each hour, as well as the \$2.50 change of registration fee if the original registration is changed.

The blanket fee includes matriculation, registration, student health, laboratory, library, diploma, and course fees.

FEE REFUNDS

A student who withdraws from the University during any term for which he is registered may be entitled to claim a refund of a portion of his fees. A refund schedule is available in the Finance Office.

MISCELLANEOUS FEES*

The following fees are not included in the schedules listed above:

Transcript—one copy furnished free	
Each additional original	\$ 1.00
Degree in absentia	10.00
Special examination, each course	1.00
Cap and Gown Rental:	
Master's cap and gown	3.50
Master's Hood	3.50

No person may be recommended for a degree unless he has paid all fees assessed.

* Fees are subject to change.

DESCRIPTION OF COURSES

(I—Courses offered Fall Quarter; II—courses offered Winter Quarter; III—courses offered Spring Quarter; **—given either at beginning or end of Summer Session)

103. **Workshop on Human Relations in Clinical Nursing** (2 q.h.cr.**)
Open to nurses who are interested in exploring the dynamics of human relations which affect their interaction with patients in any clinical service.
104. **Workshop on Dynamics of Human Relations in Nursing** (2 q.h.cr.**)
Open to nurses who are interested in learning about the underlying motivations which affect their relationships with co-workers.
105. **Workshop on Dynamics of Teaching** (2 q.h.cr.**)
Open to nurses as an experience in acquiring the meaning of the dynamics of the learning process which might be initiated through different kinds of group experiences.
106. **Workshop on Dynamics of Administration** (2 q.h.cr.**)
Open to nurses as an experience in acquiring the meaning of dynamics of leadership through different kinds of group experiences.
301. **Foundations of Human Behavior** (4 q hr cr I) Dr. Hook
Prereq: graduation from an approved school of nursing, including 6 s hr in psychology or educational psychology
Study of the fundamental biological and social drives as the motivating forces of human behavior; ways by which they are modified throughout a lifetime; and some of the psychological theories which contribute to an understanding of the dynamics of human relationships.
302. **Developmental Psychology** (2 q hr cr each, I, II, no credit unless second quarter is successfully completed) Dr. Humphreys
Prereq: 6 s hr in psychology or educational psychology, open only to qualified students in the fields related to psychiatry and upon approval of the instructor
A broad and intensive survey of the nature and range of individual differences and the methods of personality assessment from infancy to old age; a background of knowledge of normal development as a sound basis for understanding pathological deviations.
303. **Behavior Problems of Children** (2 q hr cr each, I, II, no credit unless second quarter is successfully completed) Dr. Rose and Miss Swoetinsky
Prereq: 6 s hr in psychology or educational psychology including the teaching of the various schools of psychological theories. Open only to qualified students in the fields related to psychiatry and upon approval of the instructor
Deviation from normal behavior according to current child guidance theories with special emphasis on how a member of the professional psychiatric team helps families with emotional problems.
304. **Social Group Work** (2 q hr cr III) Mr. Garetz
Prereq: open only to qualified students in the fields related to psychiatry and upon approval of the instructor
Elementary group work principles; emphasis upon settings in which group work is practiced and its relationship to administration, supervision, and teaching.
351. **Seminar in Psychiatric Nursing** (3 q hr cr each, I, II, III) Dr. Hook and associates
Prereq: open only to qualified graduate students in nursing in an approved master's program
Intensive study will be made of the role of the psychiatric nurse as a nursing team member and an interdisciplinary team participant in any hospital or other appropriate community organization. Psychological and sociological assessment will be made of the dynamics of human behavior in various kinds of interpersonal relationships with patients and co-workers.
352. **Field Instruction in Psychiatric Nursing** (12 q hr total) Dr. Hook and field associates
Prereq: open only to qualified graduate students in nursing in an approved master's program
Directed observations and participation in selected community services which demonstrate representative practices in psychiatric care. Opportunities are provided for the student to assess her abilities as a psychiatric nurse and to select an appropriate area in the intensive study of a field project.
353. **Research Methods** (2 q hr cr III) Dr. Hook
Prereq: open only to graduate students in nursing in an approved master's program
A broad introduction to scientific methodology and thinking oriented specifically toward the needs of the nursing profession with regard to research techniques, methods, and evaluative procedures.

354. Interdisciplinary Communication in Psychiatry (2 q hr cr each, II, III) Dr. Wittson and interdisciplinary faculty

Prereq: graduate standing in the fields related to psychiatry and upon approval of instructor

Lecturers from the fields of psychiatry, clinical psychology, psychiatric social work, psychiatric nursing, and other related fields present their respective major contributions as related to the formulation and application of psychiatric theory. Seminars relate to the current subject of discussion.

355. Basic Psychodynamics (2 q hr cr each, II, III) Dr. Starr

Prereq: graduate standing in the fields related to psychiatry and upon approval of instructor

Psychoanalytic theory of personality development and factors influencing the growth and development of the individual from pre-conception through senescence. Developmental processes related to the formation of personality and character as they affect normal behavior.

Special Courses and Consultation in Clinical Psychology: Ellingson, Garfield, Humphreys.

Special Courses and Consultation in Psychiatry: Krush, Martin, Muffly, Rose, Smith, Starr, Strough, Tunaken, Wittson.

Special Courses and Consultation in Psychiatric Social Work: Garetz, Williams.

Special Courses and Consultation in Psychiatric Nursing: Birch, DeVries, Hook, Johnson, Kyle, Mansfield, Swogetinsky, Weltmer.

INTERDISCIPLINARY FACULTY

Cecil L. Wittson, M.D.: Professor and Chairman of the Department of Neurology and Psychiatry and Director of the Nebraska Psychiatric Institute. (NPI)

Irma Maurine Kyle, R.N., S.M.: Professor of Nursing and Director of the School of Nursing.

Charles G. Garetz, M.S.W., Instructor, Psychiatric Social Group Work; Chief Recreational Therapist NPI.

Sol L. Garfield, Ph.D., Associate Professor of Medical Psychology; Chief Psychologist, NPI.

Marjorie J. Hook, R.N., Ed.D., Associate Professor of Nursing; Director, Graduate Studies in Nursing.

Herbert Humphreys, Ph.D., Associate Professor of Medical Psychology; Chief Psychologist Children's Service, NPI.

Thaddeus P. Krush, M.D.: Associate Professor of Neurology and Psychiatry and Clinical Director of Community Services, NPI.

Jerman W. Rose, M.D.: Associate Professor of Neurology and Psychiatry and Clinical Director of the Children's Services, NPI.

Phillip H. Starr, M.D.: Associate Professor of Neurology and Psychiatry and Chief, Children's Out-Patient Service, NPI.

LaVern C. Strough, M.D.: Associate Professor of Neurology and Psychiatry and Assistant Director of NPI.

Margaret Williams, M.S.W.: Assistant Professor, Psychiatric Social Work; Chief Psychiatric Social Worker, NPI.

For additional information, write—

DIRECTOR OF NURSING

University of Nebraska

College of Medicine

42nd & Dewey Avenue, Omaha 5, Nebraska

THE UNIVERSITY OF NEBRASKA

Junior Division and Counseling Service

Registers and counsels all freshmen. Supervises the orientation of new students and conducts a special testing program for guidance purposes.

College of Agriculture

Leading to the degrees of Bachelor of Science in Agriculture and Bachelor of Science in Home Economics.

In addition to the resident teaching division, the College of Agriculture is comprised of the Agricultural Experiment Station with headquarters at the Lincoln campus and outlying stations at North Platte, Scottsbluff, Alliance, Crawford, Concord, and Union; the Agricultural Extension Service with headquarters at Lincoln and county or district extension offices at 83 locations in the state; and the University of Nebraska School of Agriculture at Curtis.

College of Arts and Sciences

Leading to the degree of Bachelor of Arts, Bachelor of Fine Arts, Bachelor of Music, Bachelor of Science.

School of Fine Arts

Leading to the degrees of Bachelor of Fine Arts, Bachelor of Music, Bachelor of Fine Arts in Education, Bachelor of Music in Education, Master of Music in the appropriate colleges.

School of Journalism

Leading to the degrees of Bachelor of Arts, Bachelor of Science in Agriculture, Bachelor of Science in Business Administration in the appropriate colleges, and to a certificate in journalism.

College of Business Administration

Leading to the degree of Bachelor of Science in Business Administration.

College of Dentistry

Leading to the degree of Doctor of Dental Surgery.

College of Engineering and Architecture

Leading to the degrees of Bachelor of Architecture, Bachelor of Science in Agricultural Engineering, Bachelor of Science in Chemical Engineering, Bachelor of Science in Civil Engineering, Bachelor of Science in Electrical Engineering, Bachelor of Science in Mechanical Engineering; and the professional degrees of Agricultural Engineer, Chemical Engineer, Civil Engineer, Electrical Engineer, Mechanical Engineer, and Architect.

Supervises Nebraska Engineering Experiment Station, Lincoln.

Graduate College

Leading to the degrees of Doctor of Philosophy, Master of Arts, Master of Architecture, Master of Music, Master of Science, Master of Science in Dentistry, Master of Physical Education, Master in Psychiatric Nursing and Master of Social Work.

Graduate School of Social Work

Leading to the degree of Master of Social Work and to a certificate in social work.

College of Law

Leading to the degrees of Bachelor of Science in Law and Bachelor of Laws.

College of Medicine

Leading to the degrees of Doctor of Medicine, Bachelor of Science in Medicine, Bachelor of Science in Medical Technology, Bachelor of Science in Radiological Technology.

School of Nursing

Leading to the degree of Bachelor of Science in Nursing.

College of Pharmacy

Leading to the degree of Bachelor of Science in Pharmacy.

Teachers College

Leading to the degrees of Bachelor of Science in Education, Bachelor of Arts in Education, Bachelor of Fine Arts in Education, Bachelor of Music in Education, Master of Education Doctor of Education.

Supervises University High School, Lincoln.

Summer Sessions

Conservation and Survey Division

University Extension Division

Separate bulletins or information concerning any college, school or division may be obtained free by addressing the Registrar, University of Nebraska, Lincoln 8.

