

1962

Bulletin of the School of Nursing, 1963-1964

University of Nebraska College of Medicine

Tell us how you used this information in this [short survey](#).

Follow this and additional works at: https://digitalcommons.unmc.edu/bulletin_con



Part of the [History Commons](#), and the [Nursing Commons](#)

Recommended Citation

University of Nebraska College of Medicine, "Bulletin of the School of Nursing, 1963-1964" (1962). *Bulletin of the College of Nursing*. 30.

https://digitalcommons.unmc.edu/bulletin_con/30

This Book is brought to you for free and open access by the Bulletins and Catalogs at DigitalCommons@UNMC. It has been accepted for inclusion in Bulletin of the College of Nursing by an authorized administrator of DigitalCommons@UNMC. For more information, please contact digitalcommons@unmc.edu.

Bulletin of

D up

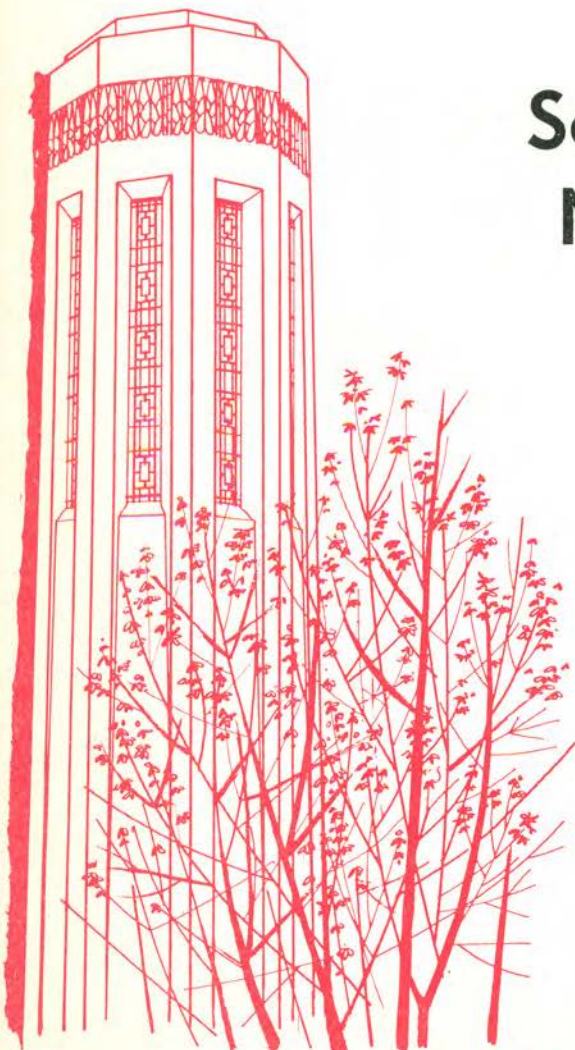
THE UNIVERSITY OF NEBRASKA

School of Nursing

ANNOUNCEMENTS
1963 - 1964

MAY 15, 1963

David W. Sawyer



college of medicine
school of nursing
1963-1964

SERIES LXVIII

MAY 15, 1963

NUMBER 16

Issued once in September, November, and July; twice in January, April, and August; 3 times in February and May; and 4 times in March by the University of Nebraska Office of Publications, Nebraska Hall, 901 N. 17th Street, Lincoln 8, Nebraska. Second class postage paid at Lincoln, Nebraska.

THE UNIVERSITY OF NEBRASKA
COLLEGE OF MEDICINE
SCHOOL OF NURSING

Calendar for 1963-1964

Summer Session

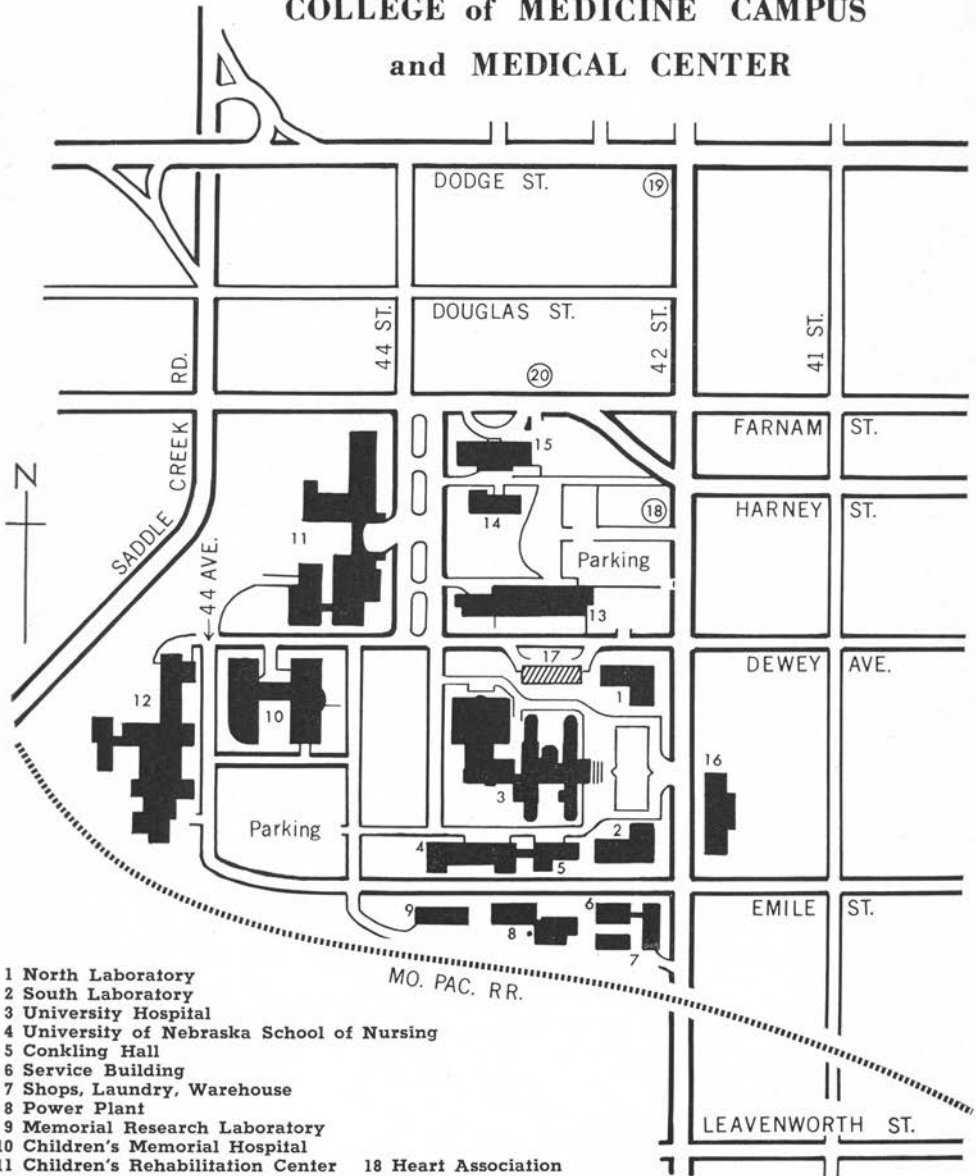
June 10, 1963	Summer session for juniors and seniors— registration, classes begin
June 17	Registration and classes—sophomores
July 4 (Thurs.)	Holiday
July 19	Mid-term scholastic reports due
August 5-9	Senior final and achievement examinations and conferences
August 12-16	Junior final and achievement examinations and conferences
August 12-September 22	Senior vacation
August 19-September 22	Junior vacation
August 15-16	Final examinations—sophomores
August 17-September 22	Sophomore vacation

Academic Year

September 23, 1963	Fall semester registration, classes begin
November 22	Mid-term scholastic reports due
November 27-December 1	Thanksgiving vacation (Wed. 8 A.M. thru Sun.)
December 21-January 5, 1964	Christmas vacation (Sat. A.M. thru Sun.)
January 28-31	Sophomore semester final examinations and conferences
February 3	Second semester registration, fees due
February 15 (Sat.)	Charter Day
March 28-April 5	Sophomore spring vacation (Easter, March 29) (Sat. 8 A.M. thru Sun.)
April 4-12	Junior and senior spring vacation
April 10	Mid-semester scholastic reports due
April 28 (Tues.)	Honors Convocation
May 9 (Sat.)	Ivy Day
May 30 (Sat.)	Memorial Day—Holiday
June 9-12	Second semester final examinations and conferences for sophomores
June 14 (Sun.)	Commencement

UNIVERSITY of NEBRASKA

COLLEGE of MEDICINE CAMPUS and MEDICAL CENTER



- | | |
|--|-------------------------------|
| 1 North Laboratory | 18 Heart Association |
| 2 South Laboratory | 19 Cancer Society |
| 3 University Hospital | 20 Multiple Sclerosis Society |
| 4 University of Nebraska School of Nursing | |
| 5 Conkling Hall | |
| 6 Service Building | |
| 7 Shops, Laundry, Warehouse | |
| 8 Power Plant | |
| 9 Memorial Research Laboratory | |
| 10 Children's Memorial Hospital | |
| 11 Children's Rehabilitation Center | |
| 12 Nebraska Psychiatric Institute | |
| 13 Clarkson Hospital | |
| 14 Clarkson School of Nursing | |
| 15 Doctors Building | |
| 16 Child Saving Institute | |
| 17 Eugene C. Eppley Institute for Research in Cancer & Allied Diseases | |



School of Nursing Building

ADMINISTRATION

The Board of Regents

	<i>Term Expires</i>
B. N. Greenberg, M.D., York	January 1965
Richard E. Adkins, Osmond	January 1965
J. Leroy Welsh, Omaha	January 1967
Clarence E. Swanson, Lincoln	January 1967
J. G. Elliott, Scottsbluff	January 1969
Val Peterson, Hastings	January 1969
Joseph Soshnik, Lincoln, Corporation Secretary	

The University

Clifford Morris Hardin, Ph.D., Chancellor of the University.

Adam Carlyle Breckenridge, Ph.D., Vice Chancellor and Dean of Faculties.

James Perry Tollman, M.D., Dean of the College of Medicine and Superintendent of the University Hospital.

James Winfred Benjamin, Ph.D., Assistant Dean of the College of Medicine.

Floyd Hoover, Ph.D., Registrar.

G. Robert Ross, Ph.D., Dean of the Division of Student Affairs.

EMERITI FACULTY

Edna P. Braun, R.N., Instructor in Public Health Nursing, Emeritus.
Mercedes Breen, R.N., B.S., Assistant Professor of Nursing, Emeritus.
Myra Tucker, R.N., Professor of Nursing, Emeritus.
Vera Warner, R.N., B.S., M.A., Assistant Professor of Nursing, Emeritus.

SCHOOL OF NURSING

Irma Maurine Kyle, R.N., B.S., S.M., Director of School and Professor of Nursing.

FACULTY

Beverly Birch, R.N., B.S., Instructor in Psychiatric Nursing.
Gwendlyn Finn, R.N., B.S., Instructor in Obstetrical and Gynecologic Nursing.
Clare R. Fleming, R.N., B.S., M.A., Assistant Director and Associate Professor of Nursing.
Kathryn Grace Frandsen, R.N., B.S., Assistant Professor of Obstetrical and Gynecologic Nursing.
Judith Hagglund, R.N., B.S., Assistant Instructor in Medical-Surgical Nursing.
Lorraine Hedman, R.N., B.S., M.P.N., Instructor in Psychiatric Nursing.
ø**Marjorie Hook, R.N.**, B.S., M.P.S., Ed.D., Associate Professor of Nursing and Director of Graduate Program in Psychiatric Nursing.
Carmen Horn, R.N., B.S., Instructor in Medical-Surgical Nursing.
Freddie Johnson, R.N., B.S., Instructor, Medical-Surgical Nursing.
‡**Marilyn Weber Johnson, R.N.**, B.S., M.P.H., Instructor in Public Health Nursing.
***Norma Grace Johnson, R.N.**, B.S., M.P.N., Assistant Professor of Mental Health Nursing.
Elizabeth Ann Kentopp, R.N., B.S., Instructor in Fundamentals of Nursing.
Jane F. Lynch, R.N., B.S., Instructor, Psychiatric Nursing.
Frances H. Macdonald, R.N., B.S., M.S., Assistant Professor of Public Health Nursing.
ø**Elaine Mansfield, R.N.**, B.S., M.P.N., Associate in Psychiatric Nursing (Chief Research Nurse).
‡**Betty Carolyn Rath, R.N.**, B.S., Instructor in Obstetrical Nursing.
Sybil Sawinsky, B.S., M.Ed., Assistant Professor of Physical Education and Counselor and Activities Director.
Nancy Schneckloth, R.N., B.S., Instructor in Surgical Nursing.
Esther Sock, R.N., B.S., M.S., Assistant Professor of Pediatric Nursing.
Regina Tangney, R.N., B.S., M.S., Associate Director and Associate Professor of Nursing.
Florence Thompson, R.N., B.S., Instructor and Public Health Consultant.
Lola Williams, R.N., B.S., M.A., Assistant Professor of Medical Nursing.
ø**Margaret Wright, R.N.**, M.S., Associate Professor of Nursing-Psychiatry.

FACULTY FROM COLLEGE OF MEDICINE

Dean Craig Affleck (G), Ph.D., Associate Professor of Medical Psychology.
John Andrew Aita, (G), Ph.D., M.D., Associate Professor of Neurology and Psychiatry.
Lawrence Cappello, B.S., M.S., D.H.&S., Public Relations and Graduate Activities.
Violet DuBois, B.S., M.P.H.A., Lecturer and Consultant.
‡**Kenneth L. Fitch, B.S.**, M.S., Ph.D., Associate Professor of Anatomy.
Gordon Everett Gibbs (G), A.B., M.A., Ph.D., M.D., Professor of Pediatrics (Chairman of Department).
Robert Leslie Grissom (G), B.S., M.D., Professor of Internal Medicine (Chairman of Department).
‡**Malcolm A. Helper, B.S.**, M.A., Ph.D., Assistant Professor of Medical Psychiatry.
Bernice Hetzner, B.A.L.S., M.A., Associate Professor of Library Science.
Roy Groves Holly (G), B.S., Ph.D., M.D., Professor of Obstetrics and Gynecology and Dean of the Graduate College.
Edward A. Holyoke (G), B.S., Ph.D., M.D., Professor of Anatomy (Chairman of Department).
Howard Beeman Hunt (G), A.M., M.D., Professor of Radiology (Chairman of Department).
Herbert Paul Jacobi (G), B.S., M.S., Ph.D., Professor of Biochemistry (Chairman of Department).

(G) Graduate College faculty member.

* On leave of absence for study.

‡ Part-time faculty.

ø Teaching consultant.

Harry Weber McFadden (G), A.B., M.D., Professor of Microbiology (Chairman of Department).
Archibald Ross McIntyre (G), Ph.D., M.D., Professor of Physiology and Pharmacology (Chairman of Department).
Merle McNeil Musselman (G), B.S., M.D., Professor of Surgery (Chairman of Department).
†**Warren H. Pearse**, B.S., M.D., Assistant Professor of Obstetrics and Gynecology (Chairman of Department).
†**Dorothy Smith**, A.B., M.D., Assistant Professor of Pediatrics.
†**Mary Tremaine** (G), A.B., M.S., Ph.D., Assistant Professor of Microbiology.
†**Violet Myrtle Wilder** (G), A.B., M.A., Ph.D., Associate Professor of Biochemistry.
Cecil Legriell Wittson (G), B.S., M.D., Professor of Neurology and Psychiatry (Chairman of Department).

COLLEGE OF ARTS AND SCIENCES

Walter Ernest Militzer, Ph.D., Dean of the College of Arts and Sciences, Director of the School of Fine Arts, Professor of Chemistry.
Alan P. Bates, Ph.D., Professor of Sociology (Chairman of Department).
Donald Warren Dysinger, Ph.D., Professor of Psychology (Chairman of Department).
Dudley Bailey, Ph.D., Associate Professor of English (Chairman of Department).

CLINICAL DIVISION—NURSING SERVICE

†**Carol Wilson**, R.N., B.A., M.A., Assistant Director of Nursing Service and Assistant Professor of Nursing.
Wilma Brisley, R.N., Assistant Head Nurse in Obstetrics.
Emma Mathilda Brocke, R.N., Instructor in Clinical Nursing, Afternoon Supervisor.
Sandra Jean Brodie, R.N., B.S., Instructor in Obstetrical Nursing, Head Nurse.
Anne Laurine Burke, R.N., B.S., Instructor, Student Personnel Health.
Lucille Embree, R.N., Supervisor with rank of Instructor in Psychiatric Nursing.
Leila M. Epstein, R.N., Instructor in Psychiatric Nursing, Acting Chief Nurse, Psychiatric Institute.
Helen Erikson, R.N., Instructor, Head Nurse in Receiving Room.
Neavola Hendrickson, R.N., Instructor in Psychiatric Nursing, Head Nurse.
Elaine Kaslon, R.N., Assistant Head Nurse in Surgery.
Karen Kavanagh, R.N., B.S., Head Nurse with rank of Instructor in Medicine.
Alice Lundgren, R.N., Instructor, Head Nurse in Central Service.
Verlyn Maaske, R.N., Head Nurse with rank of Instructor in Psychiatric Nursing.
Velma Mason, R.N., Associate in Nursing and Assistant in Nursing Service.
Lila Moffat, R.N., B.S., Instructor in Operating Room Nursing, Head Nurse.
Nell Montgomery, R.N., B.S., Head Nurse with rank of Instructor in Pediatrics.
Elizabeth Peterson, R.N., B.S., Instructor in Surgical Nursing, Head Nurse.
Josephine Pinckley, R.N., B.S., Instructor and Coordinator of In-Service Education.
Margaret Pullman, R.N., Instructor in Clinical Nursing, Night Supervisor.
Beverly Rasmussen, R.N., Head Nurse with rank of Instructor in Gynecology.
Sara Ann Redelfs, R.N., B.S., Instructor in Clinical Nursing, Supervisor of Clinics.
Donna D. Sack, R.N., B.S., Instructor in Psychiatric Nursing, Supervisor.
Edris R. Shaddy, R.N., Instructor in Psychiatric Nursing, Head Nurse.
Zada Shane, R.N., B.S., Assistant Instructor and Assistant Head Nurse, Out Patient Department.
Fern Easter Stoker, R.N., Assistant Supervisor with Rank of Instructor.
Lois Temme, R.N., B.S., Instructor in Psychiatric Nursing and Head Nurse.
Mianne Thornton, R.N., B.S., Assistant Head Nurse in Operating Room.
Barbara Anne Winfield, R.N., B.S., Instructor in Surgical Nursing and Head Nurse.

ASSISTANTS IN THE SCHOOL OF NURSING

Ella Dresher—Assistant Residence Director.
Angela Eichler—Assistant Residence Director.
Era Fullwood—Secretary.
Rose Jankowski, Secretary.
Mary Cecelia Kenny—Assistant Residence Director.
Lillian Sundberg—Director of Residence.

COMMITTEES

Student Admissions and Promotions
Curriculum
Library
Executive
Guidance and Counseling
Public Relations
Research

(G) Graduate College faculty member.

† Part-time faculty.

HISTORY

The University of Nebraska School of Nursing was established within the College of Medicine as a three-year diploma program in 1917. The present baccalaureate program, authorized by the Board of Regents in 1950, leads to the degree Bachelor of Science in Nursing and enables the graduate to continue into masters level study.

PHILOSOPHY AND OBJECTIVES

In keeping with the philosophy of the University of Nebraska, the faculty of the School of Nursing recognizes its responsibility for helping meet the great demand for nursing services through teaching, research and public service. Accordingly, students admitted into the School of Nursing are selected on the basis of their ability to develop their own capacities and to build toward fulfillment of their future roles in society.

The faculty believes that professional nursing education should use the principles from general education; therefore, the curriculum content is drawn from the humanities and from the natural, physical, social and medical sciences as well as from nursing.

The faculty believes that education is a continuous process. Thus the curriculum provides the students with (1) a foundation which stimulates a continuing personal and professional growth; (2) a liberal education which prepares for intelligent functioning in a democratic society; and (3) a self-understanding and appreciation of social and ethical values.

The faculty believes that the students need to understand the principles of democratic interaction and that they should be given an opportunity to develop leadership skills. To this end students are assisted in becoming self directing, and independent study is encouraged. Guidance is given in performance of leadership functions through participation in the student self-government and other student professional organizations, and with the aid of individual counseling services.

The objectives of the School of Nursing are based on these beliefs and are directed toward the education and preparation of professional nurses who are:

1. Capable of giving a high quality of nursing care characterized by discriminating judgment and initiative in solving nursing care problems.
2. Competent in planning, organizing, and directing activities for self and others in first level positions as team leaders and staff nurses, including public health.
3. Able to function cooperatively with other members of the health team and citizen groups in contributing to social betterment.
4. Prepared for continued personal and professional growth and are able to live productive and satisfying lives as a result of their intellectual, spiritual, ethical and social qualities.

FACILITIES FOR INSTRUCTION IN NURSING

The rich resources of the Medical Center, devoted to the advancement of medical and nursing knowledge through research, teaching, and health services, offer unique opportunities for learning. In addition to the class rooms and laboratories of the School of Nursing and the College of Medicine, the other physical facilities which are available include the University Hospital and associated clinics, the Nebraska Psychiatric Institute, the University of Nebraska Rehabilitation Center, The Eugene Eppley Foundation Cancer Research Center, the Children's Rehabilitation

Center, the Omaha-Douglas County Health Department, the Douglas County Hospital, and Veterans Hospital.

The University Hospital.—The University Hospital, where the students obtain clinical experience, is on the College of Medicine campus. Since the medical faculty constitutes the hospital staff, medical assistance in the clinical instruction of student nurses is readily available. The hospital, which has a capacity of 201 beds, is general in character and accommodates an active service in all its departments. The hospital provides teaching facilities for medical-surgical, obstetrical, and pediatric nursing.

The University Out-Patient Clinics.—Ambulatory patients representing all phases of medicine are cared for in the University Dispensary. In this facility the student nurse furthers her knowledge and skills related to patient needs, with emphasis on economic and social factors affecting the patients' welfare, and learns to appreciate the need for continuity of care.

The Nebraska Psychiatric Institute.—Located on the College of Medicine campus, the Nebraska Psychiatric Institute is a 104-bed hospital administered jointly by the Department of Public Institutions and the Board of Regents.

Nursing students receive instruction and clinical experience in psychiatric nursing in the acute and convalescent adult services, in the treatment area, and in such specialized departments as occupational therapy, recreational therapy, research, children's ward, and day-patient service.

In addition, students attend and participate in interdisciplinary conferences through which they gain appreciation and understanding of the psychiatric team's role in the treatment, care, and rehabilitation of the mentally ill. Preventive aspects also are stressed.

The Visiting Nurse Association—Division of Public Health Nursing of the Omaha-Douglas County Health Department.—This agency provides generalized public health nursing services in Omaha and Douglas County. The service includes school nursing, nursing services in child health conferences, and nursing and educational visits to homes.

Senior nursing students receive instruction and practice in this agency under the guidance and supervision of the faculty of the University of Nebraska School of Nursing.

Library.—The library of the College of Medicine contains more than 73,000 bound volumes and 25,000 pamphlets and reprints devoted to medicine and nursing as well as more than 1,100 standard medical and nursing periodicals. There is provision for the addition to the library of important books, pamphlets, and periodicals on subjects of special interest to nursing, and also on such allied subjects as social sciences, psychology, and education. The library is located in a wing of the hospital. Books may also be withdrawn at any time upon demand from the University Library at Lincoln, containing almost three-quarters of a million volumes, and from the Omaha public libraries. The scientific library in the Medical Center is recognized as one of the outstanding ones in the region. Other university and public libraries in Omaha also cooperate.

RESIDENCE

The School of Nursing Building is on the College of Medicine campus. It contains the School's educational offices and classrooms and living accommodations for the nursing students.

The attractively-furnished student rooms are double, with individual dressing-rooms. In addition to a large general lounge and recreation room,

there is a lounge area, a kitchenette, and a laundry and pressing room on each student floor.

ALUMNAE ASSOCIATION

The University of Nebraska School of Nursing Alumnae Association was organized by the graduates of the classes of 1920 and 1921 at the first annual banquet, May 21, 1921. The Association, whose present active membership is 450, provides many services and activities for students in the School.

A student loan fund, established in 1927, is available to deserving junior and senior students in the School of Nursing. Individual applications up to \$100 are considered by the Committee on Student Loans. In 1939 the use of the loan fund was extended to graduates, who may apply for aid up to \$200.

The Myra Tucker Library was established in 1946 to honor Miss Tucker, who served for 29 years as Assistant Director of the School of Nursing. The library's purpose is to provide source material, chiefly for study and research, for the nursing students. At regular intervals current books and periodicals are added to the collection.

In 1947 the Charlotte Burgess Graduate Scholarship was established as a fitting tribute to Miss Burgess, founder of the School of Nursing and director for 29 years. This scholarship of \$100, awarded at the annual banquet and homecoming of the Alumnae Association, is given to a junior student who is outstanding in professional interest and scholarship, in professional and social activities, and in her promise of professional growth. The first award of this scholarship was made in 1947.

The Nurse Reporter, official publication of the Alumnae Association, is issued quarterly to all active members. Other activities of the Alumnae Association include the maintenance of an endowed bed established in 1932, the selection of the school cape in 1933, and the furnishing of a room in the Children's Hospital to honor Miss Josephine Chamberlin in 1946.

An educational fund, established in 1951, provides one or more scholarships annually to cover the cost of tuition, fees and textbooks of one or more students who have been in the School of Nursing two quarters or more. This fund also provides for assistance in sending students and graduate nurse delegates to state and national nursing meetings and for the purchase of reference books for the ward libraries for nurses in the hospital divisions.

STUDENT AND PERSONNEL HEALTH SERVICE

The Student and Personnel Health Service, maintained by the College of Medicine, has supervision of the student's health. The Health Service is available for medical treatment of minor illnesses, medical advice and health conferences. Should hospital care be needed, the student may be cared for at University Hospital, or with family advice another hospital may be chosen. The student is responsible for the costs of hospitalization. Hospitalization insurance is available under the University group insurance program.

The University Hospital is not responsible for any pathological conditions contracted by the student while serving in the various departments.

All entering students are required to pass a physical examination satisfactorily, and are given a yearly examination thereafter and a final ex-

amination before leaving the school. A schedule of immunizations is carried out, as well as such tests as are appropriate in careful health supervision.

ADMISSION PROCEDURE AND REQUIREMENTS

Freshman Year.—Application for admission to the freshman year should be made directly to the college or university selected. At the University of Nebraska application should be made well in advance of the opening of the school term. Forms for this purpose can be obtained from the Director of Admissions, 205 Administration Building, Lincoln. When they have been completed, they should be returned to that office.

The deadline for completing application for admission to the fall term is August 31. Exceptions may be granted if it is clear that circumstances beyond the applicant's control prevented earlier application.

Since classroom space will be allocated as to order of acceptance of applications, the late applicant may not be admitted to all courses which he may request.

All aliens, regardless of residence, but excluding persons who have commenced their naturalization process, are charged an application fee of \$5.00. This fee is nonrefundable; however, if the applicant enrolls, this fee will apply toward payment of tuition and fees. This fee should accompany the application for admission.

A fee of \$10.00 must accompany the application for admission of all applicants who are not legal residents of Nebraska. This is nonrefundable unless the applicant is eligible for admission and enrolls in the University of Nebraska. Upon his enrollment, the \$10.00 deposit is applied toward the applicant's tuition fees.

Nonresident applicants for admission as undergraduates (excluding foreign students) must submit as a part of their application materials their scores on the College Entrance Examination Board Scholastic Aptitude Test, the National Merit Scholarship Qualifying Test, or the American College Test.

ADVANCE REGISTRATION DEPOSIT.—All undergraduate students who register early will be required to deposit \$25.00 on or before July 31 to reserve spaces in courses for the fall term.

The \$25.00 deposit is a reservation fee—not an admission fee—and will be applied to the cost of tuition.

All early registrants who fail to make the \$25.00 deposit will forfeit their space reservations. They will be required to repeat the complete registration process. No assurance of space in courses can be made after July 31.

Application for a refund will be honored by the Comptroller on or before July 31.

Early registrants who have made the deposit will lose their class reservations if they do not complete their enrollment by the Friday evening before classes begin. If they then fail to complete their enrollment by the final date for late registration, they will forfeit the \$25.00 deposit.

Admission to the School of Nursing.—The additional application forms required in order to progress into the School of Nursing should be completed prior to or during the fall semester of the freshman year. School of Nursing application blanks can be obtained from the Director of the University of Nebraska School of Nursing, 42nd Street and Dewey Avenue, Omaha 5, Nebraska.

No new applications for the current summer session will be accepted after May 15.

Requirements for admission to the School are the same as those for admission to the other schools and colleges of the University of Nebraska. The State Board of Nursing requires, in addition, that each applicant produce evidence of citizenship or show that the naturalization process has been initiated.

The Admissions Committee reviews the record of each candidate individually on the basis of graduation from an approved or accredited high school, the applicant's academic records, personal references, test scores, other personal qualifications such as physical and mental health, and broad interests, in order to determine her apparent potential for successful completion of the collegiate program in nursing and promise of competent performance as a professional nurse.

To be admitted as a freshman in the College of Arts and Sciences, a student must present 16 or more units from a four-year high school or its equivalent. Those who intend to study nursing should present high school credits as follows:

4-YEAR HIGH SCHOOL

English	3-4 units
Social Studies	2-4 units
Science	2 units
Mathematics	2 units
Physical Education	1 unit
Foreign Language	2 units

(Language recommended but not required for B.S. in Nursing.)

All students entering the University of Nebraska take the preregistration examinations. Those students enrolled at colleges other than the University of Nebraska must take these examinations during the spring term of the first year in Lincoln or Omaha, or by individual arrangement at the college in which they are enrolled.

BASIC PROFESSIONAL PROGRAM

The basic professional program leads to the degree of Bachelor of Science in Nursing. Fulfillment of the present course of study requires four academic years plus three summer terms of nine weeks each.

The freshman year is spent either on the main University campus in Lincoln or at another accredited college. This year of instruction provides both a foundation in general education and an orientation to the profession of nursing. In June of the freshman year nursing students transfer to the College of Medicine—School of Nursing campus in Omaha.

High school graduates are urged to start their college work the summer immediately following graduation to be sure of qualifying for the School of Nursing by the beginning of the summer term following the freshman year.

Eligibility for transfer into the School of Nursing is dependent upon earning 30 or more semester credits and maintenance of an over-all grade average of 5 with no grade below a 4 in all freshman courses, excluding physical education. Credits earned at another accredited college can usually be transferred, except for courses in which grades of "D" have been obtained. "D" grades cannot be transferred.

Freshman Year

The curriculum listed below indicates the specific requirements to be completed prior to transfer to the Omaha campus.

First Semester	Semester Credits
English composition	3 cr
Chemistry	3-5 cr
Chem 1 or 3 depending on placement exam.	
Zoology and Physiology 1.....	3 cr
Introduction to Sociology (Soc 53)	3 cr
History 1	3 cr
(May be taken in Omaha by correspondence if credit hours in science result in a maximum load)	
Physical education	1 cr
*Electives	0-3 cr
Second Semester	
English composition	3 cr
Chemistry 6 or 24.....	4-5 cr
Zoology and Physiology 2.....	3 cr
Introduction to Nursing (Nurs 60)	1 cr
** (May be taken either semester on campus or by correspondence)	
History 2	3 cr
Physical education	1 cr
*Electives	0-3 cr

If the student elects a second year in the College of Arts and Sciences she will be able to choose a wider range of subjects. Additional courses may be chosen from the following:

- Foreign language
- Social sciences (except Psychology 70 and 189)
- English (except Literature 21 and 22)
- Physics
- Mathematics
- Philosophy
- Electives in other areas

If the student wishes to qualify for an honorary society she should refer to the requirements outlined in the College of Arts and Sciences bulletin.

* Music 171 and 172, Art 29, Scientific Greek 73, Philosophy 20, Anthropology 11, Geography 11.

** For correspondence study, write to the Extension Division, University of Nebraska, Lincoln 8, Nebraska.

***Summer Term**

Department	Course No.	Course	Semester Credits
Chemistry	51	Biochemistry and Physics Applied to Nursing	5 cr
Psychology	51	General Psychology	3 cr

Sophomore Year (includes summer term)

Anatomy	51	Human Anatomy	3 cr
Physiology	51	Human Physiology	3 cr
Microbiology	71	Principles of Microbiology	4 cr
Physiology	71	Pharmacology	2 cr
Psychology	151	Developmental Psychology	3 cr
Nursing	61	Fundamentals of Nursing	6 cr
Nursing	81	Medical and Surgical Nursing	8 cr
Nursing	143	Medical-Surgical Nursing	6 cr
Physical Education	53	Recreational Sports	0 cr

Junior Year (includes summer term)

Nursing	183	Medical-Surgical Nursing	6 cr
Nursing	125	Introduction to Public Health	3 cr
**Nursing	190	Obstetrical Nursing	8 cr
**Nursing	181	Pediatric Nursing	8 cr
English	21 and 22	Types of British and American Literature	6 cr

Senior Year

Nursing	184	Senior Seminar	8 cr
Nursing	189	Family and Community Nursing	8 cr
**Nursing	195	Psychiatric Nursing	8 cr
Nursing	173	Professional Problems in Nursing	3 cr
Sociology	161	Social Organization and Disorganization	3 cr

Total 135 cr

GRADING SYSTEM

The passing grade in the School of Nursing is 4 (70%). An average of 4.5 must be maintained in the sciences with an over-all term average of 5 (75%).

The relative values of number grades, letter grades and percentage grades are:

NUMBERS	LETTERS	PERCENTAGES
9		95-100
8	A	90-94
7		85-89
6	B	80-84
5		75-79
4	C	70-74
3		65-69
2	D	60-64
1	F	F (Failure)
O	Incomplete	
X or A	Dropped in good standing	
P	Passed not graded	
NR	No report	

* Point of transfer into the School of Nursing, Omaha campus.

** Students are registered in one of these three groups the latter half of the junior year or the first term of the senior year.

An "incomplete" is given when a student, through illness, military service, hardship or death in the immediate family, is unable to complete the requirements of the course in the term in which she is registered for credit but has already substantially completed the major requirements of the course.

This grade of "O" must be made up within two years or it will be automatically changed to "I" and may not thereafter be made up. When the course not completed is a prerequisite for a second required course, special arrangements must be made with the instructors involved.

CONTINUATION IN THE SCHOOL

Successful completion of each semester's program is determined by the quality of the student's personal and professional development and academic achievement.

Attendance in all class and laboratory activities is required for the privilege of taking the examination and receiving credit for a course. Exceptions must be arranged for on an individual basis with the instructor.

Excused absences may be granted for personal illness or illness or death in the immediate family.

Absences in excess of one day and not exceeding one week will be made up at the discretion of the instructor. Absences of one week or longer may need to be made up at a later time.

A student will be placed on probation whenever either scholastic achievement or nursing practice progress is unsatisfactory. Despite a satisfactory grade level, a student may, upon vote of the Admissions and Promotions Committee, be placed on probation because of failure to make satisfactory progress in developing professional competence and attitudes. Regular standing must be restored within a given period, or at the end of a particular semester, if the student is to remain in the school.

The faculty of the School of Nursing reserves the right to recommend, at any time, the withdrawal of a student whose personality, health, conduct, or scholastic standing makes it inadvisable for her to remain in the School of Nursing.

EXPENSES*

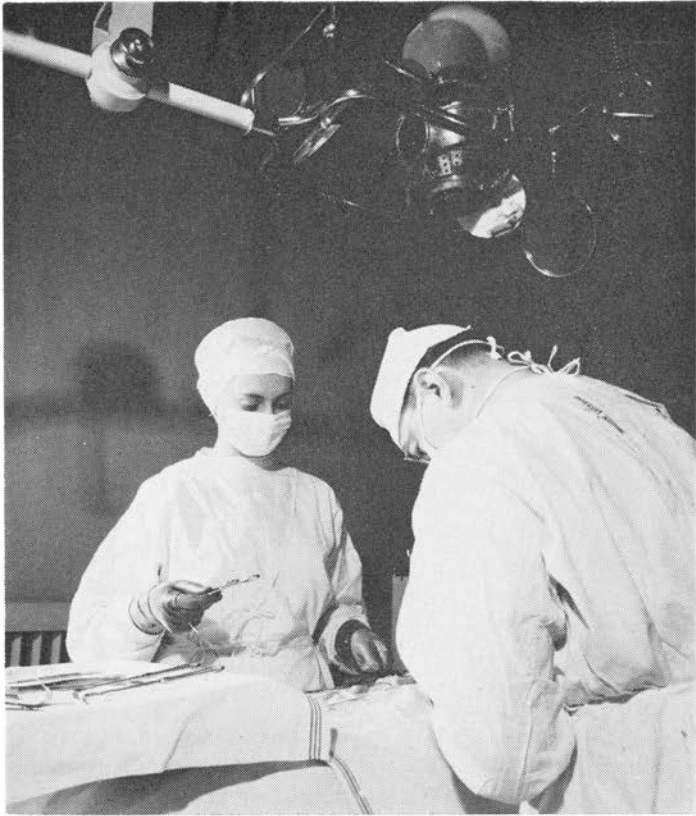
At the University of Nebraska the following is a guide to basic costs on a semester basis while on the Lincoln campus:

Tuition and fees.....	\$132
Room and board (dormitory).....	330
Books, instructional supplies.....	38
	<hr/>
Semester estimate	\$500

Summer session tuition is \$66.00 for residents of Nebraska (\$126.00 for nonresidents). Part-time students are charged at the rate of \$11.00 a credit hour (\$21.00 a credit hour for nonresidents).

A student's right to classification as a resident for purposes of registration in a state educational institution must be determined under the provisions of Sec. 85-502, Revised Statutes of 1943, Reissue of 1958.

* Tuition and fees for students residing outside of Nebraska total \$252. All fees and tuition are subject to change.



Any student who has been classified as a nonresident student who believes she can qualify as a resident may secure from the University Comptroller a residency application form and, when it is properly filled out, file such form with the Comptroller for review and ruling. The form must be filed in the Office of the Comptroller *before the end of the ninth week* of the term for which the tuition fee was charged. For the summer session, the deadline is the *end of the third week*.

The exact wording of the state law on residency is given on the application form.

For further information regarding fees for the freshman year, the applicant is referred to the bulletin of the college she elects to attend.

Omaha Campus

During the academic year 1963-1964, a fee of \$180.00 will be charged each student, resident and nonresident, for board, room, and tuition. One-half is payable in September, the other half by February 1.

Starting in September 1964, tuition for the academic year will be \$115.00 a semester for residents of Nebraska and \$140.00 for nonresidents.* The charge for board and room will be \$330.00 a semester.

*All fees are subject to change.

The summer term tuition is \$60.00 for residents of Nebraska, \$75.00 for nonresidents. The charge for board and room for the summer term is \$165.00, effective with the class which entered the School of Nursing in June 1962 and all classes thereafter.

Tuition includes matriculation, registration, student health, laboratory, library, diploma, and course fees. It does *not* include the cost of school uniforms, public health uniforms and transportation, books, or the miscellaneous fees listed below.

MISCELLANEOUS FEES: (Additional to the blanket fee)—Omaha Campus

Late registration, minimum	\$ 3.00
For each additional week after the first week of classes	1.00
Transcript, each copy (first copy free)	1.00
Degree in absentia	10.00
Special examinations, each course	1.00
Books for three years, approximately	150.00
Subscriptions for professional magazines	6.00
Uniforms, approximately	90.00
School cape (optional)	30.00
Cap and gown at graduation	4.35
School pin	approximately 12.00
State Board examination fee	15.00

A student who withdraws from the University during any term for which she is registered may be entitled to claim a refund of a portion of her fees. A refund schedule is available in the Finance Office.

All registered nurses who are taking courses in the Graduate Program in Psychiatric Nursing, but who do not want a bachelor's degree, will be registered as students at large in the School of Nursing, and will be charged the same course fees as graduate students.

Checks on personal accounts will be accepted only when written for the exact amount of the fees. Remittance by mail should be by draft, money order, or cashier's check. Do not send coin or money except by registered mail. It is impossible to trace money lost in the mail, and the University officials cannot be held responsible for such loss.

FINANCIAL AID

A number of civic and state organizations are interested in making financial assistance available to nursing students. A prospective student should get in touch with any one of the following: American Red Cross, American Legion Auxiliary, Kiwanis Club, Rotary Club, Nebraska Federation of Women's Clubs, Business and Professional Women's Clubs. Frequently a church with which the applicant is affiliated offers scholarships. Some of these carry certain stipulations that the applicant attend a designated church college, while others have no restricting clauses as to their use.

Similar aid is available through School of Nursing sources after the student has enrolled in the professional portion of the course. Among these sources are the Nurses' Alumnae Association, the Medical Faculty Wives' Club, the Omaha Quota Club.

Loans are available from several permanent University trust funds, and from funds made available by the National Defense Education Act of 1958.

Additional information regarding scholarships and loans may be obtained through the Office of Scholarships and Financial Aids, Administration Building 111, University of Nebraska, Lincoln 8, Nebraska.

SCHOOL OF NURSING SCHOLARSHIPS AND LOANS

Sarah D. Gillespie D.U.V.S.S. Fund

Donor: Sarah D. Gillespie, Tent No. 7, D. U. V.

Qualifications: Nursing student who is a direct lineal descendant of a Union veteran

Value: \$100

Apply to the School of Nursing Scholarship Committee

The University of Nebraska Upperclass Regents Scholarship

Donor: The University of Nebraska through its Board of Regents

Qualifications: Sophomore, junior and senior students in the School of Nursing. Awards made on basis of high scholarship

Value: Seven at \$100 each

Apply to Dean of the College of Medicine

Awarded by the Committee on General Scholarship Awards

Charlotte Burgess Scholarships

Donor: Alumnae Association of School of Nursing—Memorial Fund

Qualifications: Junior student. Award made on basis of scholarship and professional qualifications

Value: \$100

Apply to the Alumnae Association, School of Nursing Office

Alumnae Educational Scholarship

Donor: Alumnae Association of School of Nursing

Qualifications: Sophomore and junior students on basis of need, scholarship and professional qualifications

Value: \$180

Apply to Alumnae Association, School of Nursing Office

Ak-Sar-Ben Scholarships

Donor: Knights of Ak-Sar-Ben

Qualifications: Sophomore students, preferably Omaha residents on basis of need

Value: Three of \$150 each

Revolving Loan Fund

Donors: Medical Faculty Wives, Zonta International Club, Business and Professional Women's Association

Qualifications: Senior students for senior expenses

Value: Depends on need—\$500 available

Interest: None charged. Repayment to begin 3-6 months after graduation

Kellogg Loan Fund

Donor: Kellogg Foundation

Value: As desired—\$3,000 available

Interest: 2% while enrolled as student; 4% upon completion of school; 6% on remainder of loan at final due date

Altrusa Loan Fund

Donor: Altrusa Club of Omaha

Value: As desired—\$1,000 available to women students on College of Medicine Campus

Interest: 2% while enrolled as student; 4% upon completion of school; 6% on remainder of fund at final due date

P.E.O. Loan Fund

Donor: P.E.O.

Qualifications: Women who are educating themselves with the purpose of being self-supporting

Value: As desired—\$1,000 maximum

Interest: 3%. Interest payments to be made each year when due. Repayment of the principal is to begin no later than five years after the loan was granted; full repayment is immediately due when a girl marries

SPECIAL REGULATIONS

Marriage.—The School admits married students provided they meet all other requirements. Those who marry while in school must consult the administration to prevent conflicts in scheduling and submit a letter of consent from their parents.

Uniforms.—Student nurse uniforms are distinctive articles of dress prescribed by the School of Nursing and are the property of the School. The uniform will be worn in the manner prescribed and under the conditions specified by the Director of the School of Nursing.

Vacation, Sick Leave, and Absence.—During the freshman year, vacations correspond to the scheduled college vacations. During the three years on the College of Medicine campus, four weeks summer, two weeks Christmas, and one week spring vacation are allowed each year. Twenty-one days of sick leave are allowed during the three years. All illness days in excess of twenty-one, as well as all absent days, must be made up at the end of the course.

RECREATIONAL AND SOCIAL FACILITIES

During the freshman year in college, nursing students may participate in any of the college activities open to other students and for which they are eligible.

At the School of Nursing many recreational facilities are available. Each class is fully organized, with student officers and a faculty class sponsor, and social programs are planned both for individual classes and for the student body as a whole. Representative of these are informal teas, class dinners and picnics, junior-senior banquet, parent-daughter banquet, and all-school dances. There is a student choir from which selected members participate in the University of Nebraska Ivy Day and sing in the annual presentation of *The Messiah*. The Nurses' Alumnae Association and the Medical Faculty Wives' Club also assist in making the social and home life attractive.

Many community facilities, either for sports or for the furtherance of cultural interests, also are available.

The Student Council, with both student and faculty representation, exercises a general supervision over the all-student activity program and makes recommendations toward the formulation of school policies.

The School of Nursing is not affiliated with any religious denomination or sect, but all nurses are urged to continue a participation in the religious programs of their selected churches. Branches of the Christian Nurses' Fellowship and Westminster Fellowship offer additional opportunity for religious activity.

REQUIREMENTS FOR GRADUATION

The degree of Bachelor of Science in Nursing is granted by the Board of Regents of the University of Nebraska to students who have satisfactorily completed the requirements as outlined in the Four-Year Combined Academic and Professional Program.

GRADUATE STUDY

A graduate program in psychiatric nursing is available at the University of Nebraska Psychiatric Institute through the Graduate College. Graduates of the School of Nursing desiring graduate study in other areas are qualified to enter master's level programs in other colleges or universities.

STATE ACCREDITATION

The School is accredited by the State Board of Nursing. Upon successful completion of the course, graduates of the School are eligible to take the National State Board Test Pool Examinations for licensure in Nebraska. As registered nurses they are eligible for registration in any state whose regulations permit their endorsement, and for membership in the Alumnae Association, district, state and national organizations, and in the American National Red Cross. Before a graduate nurse may become a registered nurse she must successfully pass the State Board examinations.

DESCRIPTION OF COURSES

Course numbers 1-99 indicate freshman and sophomore level; 100-199, junior and senior level; 200-399, graduate level. Credits are computed on a semester basis.

BASIC COURSES

Biological and Physical Sciences

- 1-2. **Zoology or Biology** (6 cr)
See College of Arts and Sciences bulletin.
51. **Anatomy** (3 cr) Dr. Holyoke, Fitch and Staff
Lectures and laboratory are designed to give the student a fundamental knowledge of the structure of the human body.
51. **Physiology** (3 cr) Dr. McIntyre and Staff
Lectures, demonstrations, and laboratory contribute to the study of the function of the human body.
71. **Microbiology** (4 cr) Dr. McFadden and Staff
This course deals with the fundamental principles of microbiology with special emphasis on the common pathogenic organisms, the sources and modes of infection, and the methods of prevention of the common infectious diseases. Laboratory work includes bacteriological technic, with emphasis on practical problems of asepsis, disinfection, and isolation.
- 1 or 3. **Chemistry** (3-5 cr)
- 6 or 24. **Chemistry** (4-5 cr)
See College of Arts and Sciences bulletin.
51. **Biochemistry and Physics Applied to Nursing** (5 cr) Jacobi, Wilder and Staff
A study of the fundamental principles of inorganic, organic, and biological chemistry, with particular application to nutrition and clinical nursing; includes principles of physics applicable to clinical nursing.

Humanities

- B, 1, 2. **English Composition** (6 cr)
or
- 3-4. **English Composition** (6 cr)
See College of Arts and Sciences bulletin.
- 21-22. **Types of British and American Literature** (6 cr)
See College of Arts and Sciences bulletin.

Social and Behavioral Sciences

- 1-2. **History** (6 cr)
See College of Arts and Sciences bulletin.
53. **Sociology** (3 cr)
See College of Arts and Sciences bulletin.
161. **Sociology** (3 cr)
See College of Arts and Sciences bulletin.
51. **Psychology** (3 cr) Garfield
(Comparable to Psychology 70 given by Department of Psychology. Credit will be accepted in the College of Arts and Sciences should the student transfer from the School of Nursing.)
Fundamental principles of behavior, maturation, learning, motivation, emotion, perception, abilities.
151. **Developmental Psychology** (3 cr) Helper
Comparable to Psychology 189 in the Department of Psychology. Credit will be accepted in the College of Arts and Sciences should the student transfer from the School of Nursing.)
Development of human behavior during the entire life span of the individual.

Medical Sciences

71. **Pharmacology** (2 cr) Dr. McIntyre and Staff
A study of drugs with emphasis on the nature, action and therapeutic uses, toxicology, precautions in administration, and the therapeutic effects desired.

NURSING COURSES

Credit allowance for nursing courses is based on an eighteen-week semester. Each lecture hour earns 1 credit hour. Clinical laboratory hours are computed on a ratio of 1 credit for each 4-hour laboratory period (1:4 ratio).

60. **Introduction to Professional Nursing** (1 cr) Kyle
Study of major historical and current events as they shape the present and future character of professional nursing and other health team member roles. Lectures, discussion, observations and reports.
61. **Fundamentals of Nursing** (6 cr) Medical-Surgical Faculty
Lect 4 lab 8 for 18 weeks
This course is designed to help the student further develop a philosophy of nursing by introducing her to a concept of comprehensive nursing. Consideration is given to factors which influence the health of the individual, family, and community, and to the various ways by which health needs are met. Principles which underlie the nurse's role in the promotion and maintenance of health and the prevention of illness are discussed. The principles of nursing which are related to the understanding of the physical, emotional, spiritual, social, and intellectual needs of the patient are emphasized. The significance of behavior as it relates to self understanding and to understanding the individuality of the patient is stressed. Throughout the course, the student is assisted to grow progressively in understanding and application of the principles which pertain to the development of skill in giving comprehensive nursing care.
81. **Medical-Surgical Nursing** (8 cr) Fleming, Williams and Staff
Lect 4 lab 16 for 18 weeks. *Prereq* Nursing 60 and 61
Analysis and discussion of the basic principles of planning, giving, and evaluating comprehensive nursing care. Emphasis is on the preventive, therapeutic, and rehabilitative components of nursing. Selected learning experiences are assigned in the Out-Patient Department, Medical, and Surgical Units and in the Operating Room.
143. **Medical-Surgical Nursing** (6 cr) Fleming, Williams, and Staff
Lect 6 lab 24 for 9 weeks. *Prereq* Nursing 81
The content and guided experiences places the primary emphasis on patients with sensory, integumentary, neurological problems.
173. **Professional Problems in Nursing** (3 cr) Tangney
Emphasis is on history, graduate nurse functions, legal control, career opportunities, locating positions, privileges and responsibilities of a professional nurse. Lectures, discussions, observations, oral and written reports.
183. **Medical-Surgical Nursing** (6 cr) Fleming, Williams, and Staff
Lect 3 lab 24 for 12 weeks. *Prereq* Nursing 143
Study and guided laboratory experience is centered on patients whose health problems represent acute and long-term illness.
184. **Senior Seminar** (8 cr) Fleming and Staff
Lect 4 lab 24 for 12 weeks. *Prereq* senior standing
Advanced study and guided practice are concerned with nursing care problems common to many patients irrespective of diagnosis or clinical area. Included is a study of the principles of management as applied in team leadership situations.
190. **Obstetrical Nursing** (8 cr) Frandsen and Staff
Lect 6 clinical lab 24 for 12 weeks
This course is designed to present the basic principles of obstetrics and obstetrical nursing. Through guided selected learning experiences the student is assisted in application of the knowledges, understandings and attitudes related to giving comprehensive nursing care to mothers and infants within the framework of the family unit and community. A problem-solving, patient-centered approach places emphasis on the ante-, intra- and post-partal care as well as the care of newborn and premature infants. An increased awareness of the modern technics and trends which provide for continued improvement in maternity care is stressed throughout the course.
191. **Pediatric Nursing** (8 cr) Sock and Staff
Lect 6 clinical lab 24 for 12 weeks
This course is designed to assist the student to gain knowledge and appreciation of the care of both the well and sick child, with stress on understanding the development stages and life situations of each individual child. The basic principles of pediatric nursing are taught and applied concurrently. Selected patient-

centered learning experiences, lectures, group discussion, demonstrations, and individual conferences are utilized. Opportunities are provided to observe the functions and contributions of various community agencies in the care of the child.

195. Psychiatric Nursing (8 cr) Birch and Staff

Lect 6 clinical lab 24 for 12 weeks

Through a selective approach to psychiatric nursing and psychiatry this portion of the basic curriculum is directed toward the student's realization of the role of the psychiatric nurse and increasing her ability to function in this role. Students have selected patient-centered learning experiences with emotionally ill adults and children and with mentally retarded children. Prevention, rehabilitation, research, and an interdisciplinary approach to the patient and his family are stressed.

125. Introduction to Public Health (3 cr) Macdonald

Prereq senior standing

A course designed to acquaint the student with biostatistics, public health nutrition, epidemiology, communicable disease control, environmental sanitation, maternal and child health, and occupational and school health. Methods used include lectures, discussion, field studies observations.

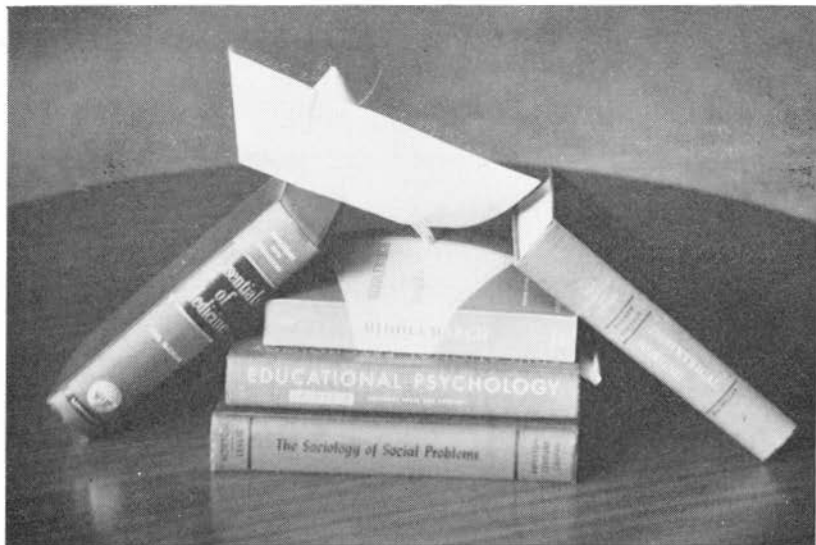
189. Family and Community Nursing (8 cr) Macdonald

Lect 6 field experience 16 for 12 weeks

A course designed to promote further understanding of the health needs of people in the community and to orient the student to the role of the public health nurse as a positive force in helping people meet these needs. Lectures, demonstrations, case conferences, observations, discussions, process recordings, together with supervised and independent nursing practice provide a comprehensive experience for senior students. This experience is provided at The Visiting Nurse Association headquarters, Division of Public Health Nursing, Omaha-Douglas County Health Department, in Omaha.

53. Recreational Sports Sawinsky (2 hrs wk)

This course is designed to contribute to the objectives relating to understanding, developing, and maintaining personal health and growth. A series of elective individual and team sports is offered to meet the special interests and needs of the students thus aiding in the integration of professional growth through personal development. In addition, the course acquaints the student with the recreational resources and activities available through utilization of bowling alleys, tennis courts, playgrounds, and other community facilities.





The

Florence Nightingale Pledge

I solemnly pledge myself before God and in the presence of this assembly to pass my life in purity and to practice my profession faithfully. I will abstain from whatever is deleterious and mischievous, and will not take or knowingly administer any harmful drug. I will do all in my power to maintain and elevate the standard of my profession, and will hold in confidence all personal matters committed to my keeping and all family affairs coming to my knowledge in the practice of my calling. With loyalty will I endeavor to aid the physician in his work, and devote myself to the welfare of those committed to my care.



ROSTER OF STUDENTS

CLASS OF 1963

Anderson, Barbara	Superior
Kansas State University 1959 University of Nebraska 1958-1960	
Bowers, Shirley	Lincoln
University of Nebraska 1959-1960	
Brunt Gloria Jean	Benkelman
University of Nebraska 1959-1960	
Burr, Joyce Carol	Sidney
University of Nebraska 1959-1960	
Carter, Jo Ann	Omaha
Doane College 1959-1960	
Clement, Ruby Mae	Scotia
University of Nebraska 1959-1960	
Condon, Helen	Creighton
University of Nebraska 1958-1960	
Daniels, Margaret Rita	Valentine
Chadron State Teachers College 1958-1960	
Deksnis, Lauma	Lincoln
University of Nebraska 1959-1960	
Dickinson, Katherine	Hemingford
Chadron State Teachers College 1958-1960	
Dunmire, Sharon	Hastings
University of Denver 1959-1960 Kearney State Teachers College 1960	
Epp, Patricia	Lincoln
University of Nebraska 1957-1960	
Hanna, Kathryn	Omaha
University of Omaha 1959-1960	
Hansen, Sharon	Gordon
Chadron State Teachers College 1959-1960	
Jones, Lois	Osceola
Kearney State Teachers College 1959-1960	
Lightfoot, Nancy	Spencer
Wayne State Teachers College 1959-1960 University of Nebraska 1960	
McHargue, Marcia	Central City
University of Nebraska 1959-1960	
Marsik, Anita Mae	Omaha
University of Omaha 1957-1958 and 1960-1961	
Melby, Mary Patricia	Lincoln
University of Nebraska 1959-1960	
Newby, Ellen	Central City
Kearney State Teachers College 1959-1960	
Oetken, Joyce Elaine	Cook
Dana College 1959-1960 University of Nebraska 1960	
Peterson, Joyce	Scotia
University of Nebraska 1959-1960	
Poitevin, Wanda Jane	Dow City, Iowa
Iowa State College 1959-1960	
Powell, Carol	Omaha
University of Omaha 1959-1960	

Prather, Sheryl	Kearney State Teachers College 1959-1960	Kearney
Sperling, Arlene	University of Nebraska 1959-1960	Arlington
Strazdins Lilita	University of Nebraska 1959-1960	Lincoln
Turner, Judith	University of Nebraska 1959-1960	Holdrege
Tuttle, Carole	University of Nebraska 1959-1960	North Platte
Wadhams, Virginia J.	University of Nebraska 1959-1960	Lincoln
Walker, Kathleen	Wayne State Teachers College 1958-1960	Page
Webster, Lorna	University of Nebraska 1959-1960	Lincoln
Wilson, Marjorie	Peru State Teachers College 1959 William Woods College 1959-1960	Nebraska City
Wiltse, Roberta	Peru State Teachers College 1959-1960	Falls City

CLASS OF 1964

Blalock, Patricia Anne	University of Nebraska 1960-1961	Arcadia
Brodd, Donna Rae	University of Nebraska 1960-1961	Lincoln
Castello, Marla Jeanne	University of Omaha 1960-1961	Omaha
Cerny, Madalyn Edna	University of Nebraska 1960-1961	Scribner
Dolbec, Patricia Ann	Hastings College 1960-1961 University of Nebraska 1961	Hastings
Dorf, Mary Ann	University of Omaha 1960-1961	Omaha
Ellingson, Judith Elizabeth	University of Nebraska 1960-1961	Lincoln
Evans, Katherine Lee	University of Nebraska 1960-1961	Lincoln
Foster, Jane Ruth	University of Nebraska 1959-1961	York
Franscioni, E. F. Coszette	University of Nebraska 1960-1961	Lincoln
Heermann, Judith Ann	University of Nebraska 1960-1961	Scribner
Hobbs, Mary Sue	Doane College 1960-1961	Strang
Hoenninger, Janet Ann	University of Nebraska 1960-1961	Grand Island
Jensen, Sally Dee	Cotley College 1959-1960 University of Nebraska 1960	Blair
Johnson, Barbara Kay	University of Nebraska 1960-1961	Lincoln

Larsen, Marcia Ann	University of Nebraska 1960-1961	Lincoln
Littlejohn, Patsy Lee	Louisiana State University 1960 University of Nebraska 1961 Creighton University 1961	Bellevue
Meisner, Adeline Ann	University of Nebraska 1960-1961	Aurora
Planer, Elizabeth Ann	University of Nebraska 1960-1961	Pierce
Rohwer, Elaine Alberta	Nebraska Wesleyan University 1954-1955 Olympic College 1960	Papillion
Schanno, Karen Kae	University of Nebraska 1960-1961	Beatrice
Schmidt, Janice Jean	University of Nebraska 1959-1961	Bridgeport
Schneider, Delilia Mae	University of Nebraska 1960-1961	Lincoln
Williams, Katherine Ann	Grinnell College 1960-1961 University of Nebraska 1961	Lincoln

CLASS OF 1965

Adkisson, Jane	University of Nebraska 1960-1962	Lincoln
Ahlschwede, Carolyn	University of Nebraska 1961-1962	Crete
Alston, Cheryle	University of Omaha 1961-1962	Omaha
Bowen, Julia	University of Omaha 1961-1962	Omaha
Braun, Marilyn	University of Nebraska 1960-1961 University of Omaha 1961-1962	Omaha
Cook, Janelle	University of Nebraska 1961-1962	Glenshaw, Pa.
Darling, Doretta	University of Nebraska 1961-1962	Oakland
Flair, Mary	University of Nebraska 1961-1962	Omaha
Gavit, Grace	University of Nebraska 1961-1962	Pierce
Golay, Nancy	Kearney State Teachers College 1961-1962	Kearney
Goodman, Ann	University of Iowa 1959-1960 Clarinda Junior College 1960-1962	Coin, Iowa
Gosch, Janice	University of Nebraska 1961-1962	Pierce
Grabill, Sheryle	Hastings College 1961-1962	Hastings
Grimm, Cynthia	University of Nebraska 1961-1962	Sidney
Hall, Patricia	University of Nebraska 1961-1962	Pawnee City

Henderson, Janet	Glenwood, Iowa
University of Nebraska 1961-1962	
Iburg, Wilma	Lincoln
University of Nebraska 1961-1962	
Idt, Barbara	Hastings
University of Nebraska 1961-1962	
Jansons, Zaiga	Lincoln
University of Nebraska 1961-1962	
Klug, Katherine	Richland
University of Nebraska 1961-1962	
Koch, Diane	Creston, Iowa
University of Nebraska 1961-1962	
Kratochvil, JoAnn	Madison
University of Nebraska 1961-1962	
Lagerquist, Karen	Essex, Iowa
University of Nebraska 1961-1962	
Low, Nadine	Uehling
University of Nebraska 1961-1962	
Malloy, Joan	Essex, Iowa
University of Nebraska 1961-1962	
Neben, Marjorie	Lexington
University of Nebraska 1961-1962	
Neilsen, Karen	Omaha
University of Omaha 1961-1962	
Petersen, Beatrice	Omaha
University of Omaha 1961-1962	
Post, Gail	Shelton
University of Nebraska 1961-1962	
Real, Shirley	Fairmont
Doane College 1960-1962	
Saylan, Dorothy	Omaha
University of Minnesota 1960-1962	
Schettler, Susan	Blair
Dana College 1961	
Lindenwood College 1961-1962	
Scudder, Peggy	Omaha
Midland College 1959-1961	
University of Nebraska 1961	
Steiner, Charlotte	Burchard
University of Nebraska 1961-1962	
Voss, Mary	Lincoln
University of Nebraska 1961-1962	
Walkenhorst, Carol	Omaha
University of Nebraska 1961-1962	
Whitney, Diana	Lincoln
Nebraska Wesleyan University 1961-1962	

BACCALAUREATE PROGRAM

for

REGISTERED NURSES

PHILOSOPHY AND OBJECTIVES

The program is designed for the graduate of a diploma or associate degree school who desires a broader background of general and professional education than she has previously received. The curriculum is based upon the philosophy of the basic baccalaureate program of the University of Nebraska School of Nursing. The content is planned to extend the previous preparation of the nurse, and the program is organized to meet individual needs. It aims to increase the nurse's ability to function as a person and as a citizen in a democratic society, as a skilled practitioner, and as an effective member of the health team. Successful completion of the program will enable her to qualify for continued education on a graduate level.

The content of the professional courses includes recent clinical developments and concepts in the field of nursing, principles and methods of teaching and leadership, problems and trends in the profession, and public health nursing. The main emphasis is upon increasing the student's understanding of underlying principles and upon further developing her skills in giving comprehensive nursing care by means of selected experiences in the hospital units and community health facilities.

ADMISSION REQUIREMENTS

Candidates for admission into the baccalaureate program must be graduates of a state-accredited school of nursing and registered to practice. They must also qualify for admission to the University.

Prospective students can obtain the necessary application forms from the Director of Admissions, University of Nebraska, 205 Administration Building, Lincoln 8. Students who have previously been enrolled at the University of Nebraska should apply for re-admission.

The application form should be completed and returned to the Director of Admissions with:

1. High school transcript,
2. Transcript from each college previously attended,
3. School of nursing transcript, signed by the director, giving courses, grades, clinical days, and dates of attendance.

ENTRANCE EXAMINATIONS

Prior to registration, the student is expected to take the following examinations by appointment with the University Examination Service:

1. Placement examinations in English and chemistry,
2. Proficiency examinations in anatomy, microbiology, psychology, and sociology,
3. Graduate nurse examinations.

ADVANCED CREDIT

1. Advanced credit will be determined on the basis of transcript and results of examination.

2. Clinical nursing credit is determined after the applicant has taken the GNE examination and successfully completed at least 15 credits in the required preprofessional courses. In addition, the applicant's nursing transcript must show clinical courses and experiences (medicine, surgery, obstetrics, pediatrics, psychiatry) satisfactory to the University of Nebraska School of Nursing.

A deficiency in nursing education is indicated if part of the nursing sequence required on the baccalaureate level has not been included in the previous nursing program or if the applicant fails to meet the expected test level. Nursing deficiencies must be removed on the Omaha campus.

Maximum Advanced Credit Allowed

	<i>Semester Credits</i>
Clinical nursing (excluding Public Health).....	40
Microbiology	3
Anatomy	3
Psychology	3
Sociology	3
Total	52

GRADUATION REQUIREMENTS

1. A minimum of 125 semester credits, with no grade below a 4 (70-74) and an over-all average of 5 (75-79) are required to obtain a degree of Bachelor of Science in Nursing. The total number of credit hours will usually exceed 125 when both general and professional course requirements have been met.

2. The candidate must meet stipulated requirements of the University of Nebraska.

3. Of the final 36 semester hours, the last 30 must be taken on the University of Nebraska campus—Lincoln or Omaha.

4. Application for graduation must be made through the School of Nursing at least three months before the expected date of graduation.

SUMMARY OF COURSE REQUIREMENTS

To be considered as an applicant for the senior nursing curriculum on the Omaha campus the following courses must have been completed either on the Lincoln campus or at another accredited college.

1. English	12 cr
Composition	6 cr
Literature	6 cr
2. Social sciences	18 cr
History	6 cr
Sociology	6 cr
Psychology	6 cr
3. Chemistry	11-14 cr
General	7-9 cr
*Organic	4-5 cr
4. Zoology	6 cr
5. **Physiology	3 cr
6. *Nutrition	3 cr
7. Electives	9-12 cr
8. Physical Education	2 cr

* May be combined in a 5-credit course in Omaha during the summer term.

** May be taken on Lincoln or Omaha campus.

After completion of the above, the following professional courses must be taken on the Omaha campus (22-30 hours), with a possible reduction dependent upon the number of hours of acceptable advanced credit allowed toward the baccalaureate degree.

1. Senior Seminar	8 cr
2. Introduction to Public Health	3 cr
3. Family and Community Nursing	8 cr
4. Professional Problems	3 cr

EXPENSES*

Lincoln Campus

Tuition:** \$132.00 per semester (\$252.00 for nonresidents)
 \$66.00 per summer (\$126.00 for nonresidents)

(For part-time students taking less than 12 hours the charge is \$11.00 per credit hour—\$21.00 per credit hour for nonresidents.)

Board and room: \$330.00 per semester in residence halls
 \$165.00 for summer session in residence halls

Omaha Campus

(The advanced student may live off campus.)

Tuition, board, and room:** \$180.00 per academic year
 \$60.00 per summer (\$75.00 for nonresidents)

Books: \$25.00 to \$40.00 each semester

Uniforms: Responsibility of student
 White for hospital assignments

Blue skirt and sweater, white blouse and regulation cap for public health field experience

Transportation when in public health nursing field practice: Responsibility of student

Starting in September 1964 the fees on the Omaha campus will be:

Tuition: \$115.00 per semester (\$140.00 for nonresidents)
 \$60.00 per summer (\$75.00 for nonresidents)

(For part-time students taking less than 12 hours the charge will be \$10.00 per credit hour—\$12.00 for nonresidents.)

Board and room: \$330.00 per semester in residence hall.
 \$165.00 for summer session

*All fees are subject to change.

**Tuition, board, and room are payable upon registration.

**STUDIES IN PSYCHIATRIC NURSING AND
CONCEPTS OF HUMAN RELATIONS
FOR GRADUATE NURSES
THE GRADUATE PROGRAM**

The University of Nebraska, through its Graduate College, is in a strategic position to offer a clinical specialization program of graduate studies in psychiatric nursing. Such a program necessarily includes provisions for appropriate clinical experiences relating to the promotion of mental health and the prevention and treatment of mental and emotional illness. Thus, rather than the preparation of a nurse for a specific position, the program is focused on the elements of effective nursing as the central core of varied patterns of teaching, administration, and research. The research, by collaboration and co-operation with related disciplines, takes the form of a continuing analysis of nursing care and the effective communication of such care to associates, students, patients, and others. Seminars, workshops, and field instruction provide opportunities for achieving adequate understanding of behavior dynamics.

Interdisciplinary faculty, opportunities for teaching and research, and excellent physical facilities are available from the School of Nursing of the College of Medicine, the Graduate College, and the Nebraska Psychiatric Institute and its associated institutions and agencies.

The School of Nursing offers a four-year basic collegiate program which includes a course in psychiatric nursing at the Nebraska Psychiatric Institute. This provides a graduate-nurse practice field for the direction of basic students, and further study and experimentation involves the integration of the psychological aspects of patient care in the total nursing curriculum.

The Nebraska Psychiatric Institute is part of the University's medical center. It is operated jointly by the Board of Regents and the Department of Institutions and offers adequate treatment facilities for the care of selected patients with varying types and degrees of mental illness and mental subnormalities. The floor space for administration, teaching, and research purposes approximates that for inpatient, outpatient, and day patient treatment services, with special areas for children and adults. The well-equipped library, numerous class and conference rooms, tape recorders, one-way mirrors, and closed-circuit television contribute to effective teaching. In addition to a variety of opportunities for clinical education in all related psychiatric disciplines, short seminars, workshops, and longer courses are available for general medical practitioners, nurses, and social workers as well as programs of public education for non-medical persons such as teachers, ministers, and welfare workers.

Thus, a graduate student in psychiatric nursing has an opportunity to participate in varied types of interdisciplinary team activities in practice fields which provide opportunities for experimentation in the direction of effective nursing care of patients with varied degrees and types of mental disorders. Education of nurses in psychiatric nursing specialization is selective rather than inclusive and provides experiences in the comprehensive and skilled care of patients rather than specialization in nursing education or administration. However, the art of communicating clinical

skills through appropriate methods of teaching, supervision, and administration is a necessary part of clinical specialization, with research, writing, teaching, and consultation services the concomitant functions.

A well-planned field of study (of approximately one quarter's duration) is an integral part of the graduate program. This is planned by careful evaluation of the background and interest of each student, is preceded by an appropriate program of studies, and involves collaboration by the University faculty, field representative, and the student.

Candidates for the degree of Master in Psychiatric Nursing must have completed an approved professional program in nursing, hold a bachelor's degree from a recognized university or college, and must have met the general requirements for admission to the Graduate College. Evidence will need to be furnished regarding the student's personal qualifications for psychiatric nursing.

The program for the degree includes a minimum of 45 quarter hours of approved course work, and, in addition, the successful completion of a field study of approximately one quarter's duration in an approved institution.

A limited number of federal stipends from the National Institute of Mental Health are available to qualified students.

COURSES IN PSYCHIATRIC NURSING AND RELATED SUBJECTS

The courses are offered through the School of Nursing and the Graduate College of the University of Nebraska.

Courses for undergraduate students may be taken for credit in colleges and universities which will accept them as electives.

The following courses are offered for undergraduate credit only:

- 103. **Workshop on Human Relations in Clinical Nursing** (2 q h cr)
- 104. **Workshop on Dynamics of Human Relations in Nursing** (2 q h cr)
- 105. **Workshop on Dynamics of Teaching** (2 q h cr)
- 106. **Workshop on Dynamics of Administration** (2 q h cr)

The following courses are offered for graduate and undergraduate credit:

- 301. **Foundations of Human Behavior**
- 302. **Developmental Psychology**
- 303. **Behavior Problems of Children**
- 304. **Introduction to Social Group Work**

The following courses are offered for graduate credit only:

- 350. **Psychiatric Concepts**
- 351. **Seminar in Psychiatric Nursing**
- 352. **Field Instruction in Psychiatric Nursing**
- 353. **Research Methods**
- 354. **Interdisciplinary Communication in Psychiatry**
- 355. **Basic Psychodynamics**
- 356. **Problems in Psychiatric Nursing**

APPLICATION PROCEDURE

Prerequisites for Undergraduate Courses: Graduation from an approved school of nursing, including six semester hours in psychology.

Prerequisites for Graduate Courses: Graduation from an approved school of nursing, a bachelor's degree from a recognized university or

college, and the ability to meet the general requirements for admission to the Graduate College.

Procedure: Applications for admission for graduate study should be directed to the Dean of the Graduate College, 306 Administration Building, University of Nebraska, Lincoln. Three copies of the formal applications must be accompanied by an official record or transcript of the basic course in professional nursing and the college credits leading to the bachelor's degree.

GRADUATE FEES*

All students who are legal residents of Nebraska and who carry a full schedule (12 or more hours) in any quarter will pay a blanket fee of \$88.00 per quarter. Nonresident students will pay a blanket fee of \$168.00 per quarter.

Resident students who originally register for less than 12 hours a quarter will be charged at the rate of \$7.33 for each hour up to and (if courses are added later) including the twelfth hour. Hours thereafter may be added free of charge.

A change of registration fee of \$2.50 is charged in addition to the blanket fee for any changes made in the original registration.

Nonresident students who register for less than 12 hours a quarter will be charged at the rate of \$14.00 for each hour, as well as the \$2.50 change of registration fee if the original registration is changed.

The blanket fee includes matriculation, registration, student health, laboratory, library, diploma, and course fees.

FEE REFUNDS

A student who withdraws from the University during any term for which he is registered may be entitled to claim a refund of a portion of his fees. A refund schedule is available in the Finance Office.

MISCELLANEOUS FEES*

The following fees are not included in the schedules listed above:

Transcript—one copy furnished free	
Each additional copy.....	\$ 1.00
Degree in absentia	10.00
Special examination, each course	1.00
Cap and gown rental:	
Master's cap and gown	3.50
Master's hood	3.50

No person may be recommended for a degree unless he has paid all fees assessed.

* Fees are subject to change.

DESCRIPTION OF COURSES

(I—Courses offered Fall Quarter; II—courses offered Winter Quarter; III—courses offered Spring Quarter; **—given either at beginning or end of Summer Session)

103. **Workshop on Human Relations in Clinical Nursing** (2 q h cr**) Open to nurses who are interested in exploring the dynamics of human relations which affect their interaction with patients in any clinical service.
104. **Workshop on Dynamics of Human Relations in Nursing** (2 q h cr**) Open to nurses who are interested in learning about the underlying motivations which affect their relationships with co-workers.
105. **Workshop on Dynamics of Teaching** (2 q h cr**) Open to nurses as an experience in acquiring the meaning of the dynamics of the learning process which might be initiated through different kinds of group experiences.
106. **Workshop on Dynamics of Administration** (2 q h cr**) Open to nurses as an experience in acquiring the meaning of dynamics of leadership through different kinds of group experiences.
301. **Foundations of Human Behavior** (4 q hr cr) Hook
Prereq: graduation from an approved school of nursing, including 6 sem hr in psychology or educational psychology
Study of the fundamental biological and social drives as the motivating forces of human behavior; ways by which they are modified throughout a lifetime; and some of the psychological theories which contribute to an understanding of the dynamics of human relationships.
302. **Developmental Psychology** (2 q hr cr each, I, II, no credit unless second quarter is successfully completed) Haworth
Prereq: 6 sem hr in psychology or educational psychology, open only to qualified students in the fields related to psychiatry and upon approval of the instructor
A broad and intensive survey of the nature and range of individual differences and the methods of personality assessment from infancy to old age; a background of knowledge of normal development as a sound basis for understanding pathological deviations.
303. **Behavior Problems of Children** (2 q hr cr each, I, II, no credit unless second quarter is successfully completed) Starr
Prereq: 6 sem hr in psychology or educational psychology including the teaching of the various schools of psychological theories. Open only to qualified students in the fields related to psychiatry and upon approval of the instructor
Deviation from normal behavior according to current child guidance theories with special emphasis on how a member of the professional psychiatric team helps families with emotional problems.
304. **Social Group Work** (2 q hr cr III) Garetz
Prereq: open only to qualified students in the fields related to psychiatry and upon approval of the instructor
Elementary group work principles; emphasis upon settings in which group work is practiced and its relationship to administration, supervision, and teaching.
351. **Seminar in Psychiatric Nursing** (3 q hr cr each, I, II, III) Hook and associates
Prereq: open only to qualified graduate students in nursing in an approved master's program
Intensive study will be made of the role of the psychiatric nurse as a nursing team member and an interdisciplinary team participant in any hospital or other appropriate community organization. Psychological and sociological assessment will be made of the dynamics of human behavior in various kinds of interpersonal relationships with patients and co-workers.
352. **Field Instruction in Psychiatric Nursing** (12 q hr total) Hook and field associates
Prereq: open only to qualified graduate students in nursing in an approved master's program
Directed observations and participation in selected community services which demonstrate representative practices in psychiatric care. Opportunities are provided for the student to assess her abilities as a psychiatric nurse and to select an appropriate area in the intensive study of a field project.
353. **Research Methods** (2 q hr cr) Hook
Prereq: open only to qualified graduate students in an approved master's program
A broad introduction to scientific methodology and thinking oriented specifically towards the needs of the nursing and occupational therapy professions with regard to research technics, methods, and evaluative procedures.

- 354. Interdisciplinary Communication in Psychiatry** (2 q hr cr each, II, III) Wittson and interdisciplinary faculty
Prereq: graduate standing in the fields related to psychiatry and upon approval of instructor
 Lecturers from the fields of psychiatry, clinical psychology, psychiatric social work, psychiatric nursing, and other related fields present their respective major contributions as related to the formulation and application of psychiatric theory. Seminars relate to the current subject of discussion.
- 355. Basic Psychodynamics** (2 q hr cr each, I, II) Starr
Prereq: graduate standing in the fields related to psychiatry and upon approval of instructor
 Psychoanalytic theory of personality development and factors influencing the growth and development of the individual from pre-conception through senescence. Developmental processes related to the formation of personality and character as they affect normal behavior.
- 356. Problems in Psychiatric Nursing** (1-5 q h cr)
Prereq: open only to graduate students in nursing in an approved master's program and upon approval of the instructor
 Individual investigation other than thesis or field study of some special problem elected or assigned.
- Special Courses and Consultation in Clinical Psychology:** Affleck, Ellingson, Haworth, Helper, Wolpin.
- Special Courses and Consultation in Psychiatry:** Bartholow, Beitenman, Dutch, M. Eaton, L. Eaton, Herrick, Krush, Menolascino, Muffy, Osborn, Starr, Strough, Tunakan, Wittson.
- Special Courses and Consultation in Neurology:** Dutch, Schain.
- Special Courses and Consultation in Psychiatric Social Work:** Garetz, Hubbard, Melcher, Phelps, Scofield, Williams.
- Special Courses and Consultation in Psychiatric Occupational Therapy:** Dundon.
- Special Courses and Consultation in Psychiatric Nursing:** Birch, DeVries, Epstein, Hedman, Hendricksen, Hook, Lynch, Mansfield, Sack, Wright.

INTERDISCIPLINARY FACULTY

- Cecil L. Wittson, M.D.:** Professor and Chairman, Department of Neurology and Psychiatry; Director, Nebraska Psychiatric Institute.
- Irma Maurine Kyle, R.N., S.M.:** Professor of Nursing; Director of the School of Nursing.
- H. Dwyer Dundon, O.T.R., M.A.:** Associate Professor of Psychiatric Occupational Therapy, Department of Neurology and Psychiatry; Director, Master's Degree Program in Psychiatric Occupational Therapy; Chief Occupational Therapist, Nebraska Psychiatric Institute.
- Charles Garetz, M.S.S.W.:** Associate in Psychiatric Social Group Work, Department of Neurology and Psychiatry; Chief Social Group Worker, Nebraska Psychiatric Institute.
- Mary Haworth, Ph.D.:** Assistant Professor of Medical Psychology; Clinical Psychologist, Nebraska Psychiatric Institute.
- Marjorie J. Hook, R.N., Ed.D.:** Associate Professor of Nursing; Director, Graduate Program in Psychiatric Nursing.
- Phillip H. Starr, M.D.:** Associate Professor, Department of Neurology and Psychiatry; Chief, Children's Outpatient Service, Nebraska Psychiatric Institute.
- LaVern C. Strough, M.D.:** Associate Professor, Department of Neurology and Psychiatry; Assistant Director, Nebraska Psychiatric Institute.
- Bulent T. Tunakan, M.D.:** Assistant Professor, Department of Neurology and Psychiatry; Clinical Director, Adult Inpatient Service, Nebraska Psychiatric Institute.

For additional information, write—
DIRECTOR, SCHOOL OF NURSING
University of Nebraska
College of Medicine
42nd & Dewey Avenue, Omaha 5, Nebraska

**COLLEGES, SCHOOLS, AND DIVISIONS
OF
THE UNIVERSITY OF NEBRASKA**

Junior Division

Supervises the orientation, advising, and registration of freshmen.

College of Agriculture

Leading to the degree of Bachelor of Science in Agriculture.

In addition to the resident teaching division, the College of Agriculture is comprised of the Agricultural Experiment Station with headquarters on the Lincoln campus and at outlying stations at North Platte, Scottsbluff, Alliance, Crawford and Concord; the Agricultural Extension Service with headquarters in Lincoln, and county or district extension offices at 83 locations in the state; and the University of Nebraska High School of Agriculture at Curtis.

School of Home Economics

Leading to the degree of Bachelor of Science in Home Economics.

College of Arts and Sciences

Leading to the degrees of Bachelor of Arts, Bachelor of Fine Arts, Bachelor of Music, Bachelor of Science.

School of Fine Arts

Leading to the degrees of Bachelor of Arts, Bachelor of Fine Arts, Bachelor of Fine Arts in Education, Bachelor of Music in Education, Master of Music—in the appropriate colleges.

School of Journalism

Leading to the degrees of Bachelor of Arts, Bachelor of Science in Agriculture, Bachelor of Science in Business Administration, Bachelor of Arts in Education—in the appropriate colleges—and to a Professional Certificate in Journalism.

College of Business Administration

Leading to the degree of Bachelor of Science in Business Administration.

College of Dentistry

Leading to the degree of Doctor of Dental Surgery.

College of Engineering and Architecture

Leading to the degrees of Bachelor of Architecture, Bachelor of Science in Agricultural Engineering, Bachelor of Science in Chemical Engineering, Bachelor of Science in Civil Engineering, Bachelor of Science in Electrical Engineering, Bachelor of Science in Mechanical Engineering; and the professional degrees of Agricultural Engineer, Chemical Engineer, Civil Engineer, Electrical Engineer, Mechanical Engineer, and Architect.

Supervises Nebraska Engineering Experiment Station, Lincoln.

Graduate College

Leading to the degrees of Doctor of Philosophy, Master of Arts, Master of Science, Master of Architecture, Master of Fine Arts, Master of Music, Master of Science in Dentistry, Master of Physical Education, Master in Psychiatric Nursing, Master in Psychiatric Occupational Therapy, and Master of Social Work.

Graduate School of Social Work

Leading to the degree of Master of Social Work.

College of Law

Leading to the degrees of Bachelor of Science in Law and Bachelor of Laws.

College of Medicine

Leading to the degrees of Doctor of Medicine, Bachelor of Science in Medicine, Bachelor of Science in Medical Technology, Bachelor of Science in Radiological Technology, certificate in Medical Technology, and certificate in Radiologic Technic.

School of Nursing

Leading to the degree of Bachelor of Science in Nursing.

College of Pharmacy

Leading to the degree of Bachelor of Science in Pharmacy.

Teachers College

Leading to the degrees of Bachelor of Science in Education, Bachelor of Arts in Education, Bachelor of Fine Arts in Education, Bachelor of Music in Education, Master of Education, Doctor of Education.

Supervises University High School, Lincoln.

Summer Sessions

University Extension Division

Separate bulletins or information concerning any college, school or division may be obtained free of charge by addressing the Registrar, University of Nebraska, Lincoln 8, Nebraska

