

1942

## Bulletin of the University of Nebraska: Annual Catalog of the College of Medicine, 1942-1943

University of Nebraska College of Medicine

Tell us how you used this information in this [short survey](#).

Follow this and additional works at: [https://digitalcommons.unmc.edu/bulletin\\_com](https://digitalcommons.unmc.edu/bulletin_com)



Part of the [History Commons](#), and the [Medical Education Commons](#)

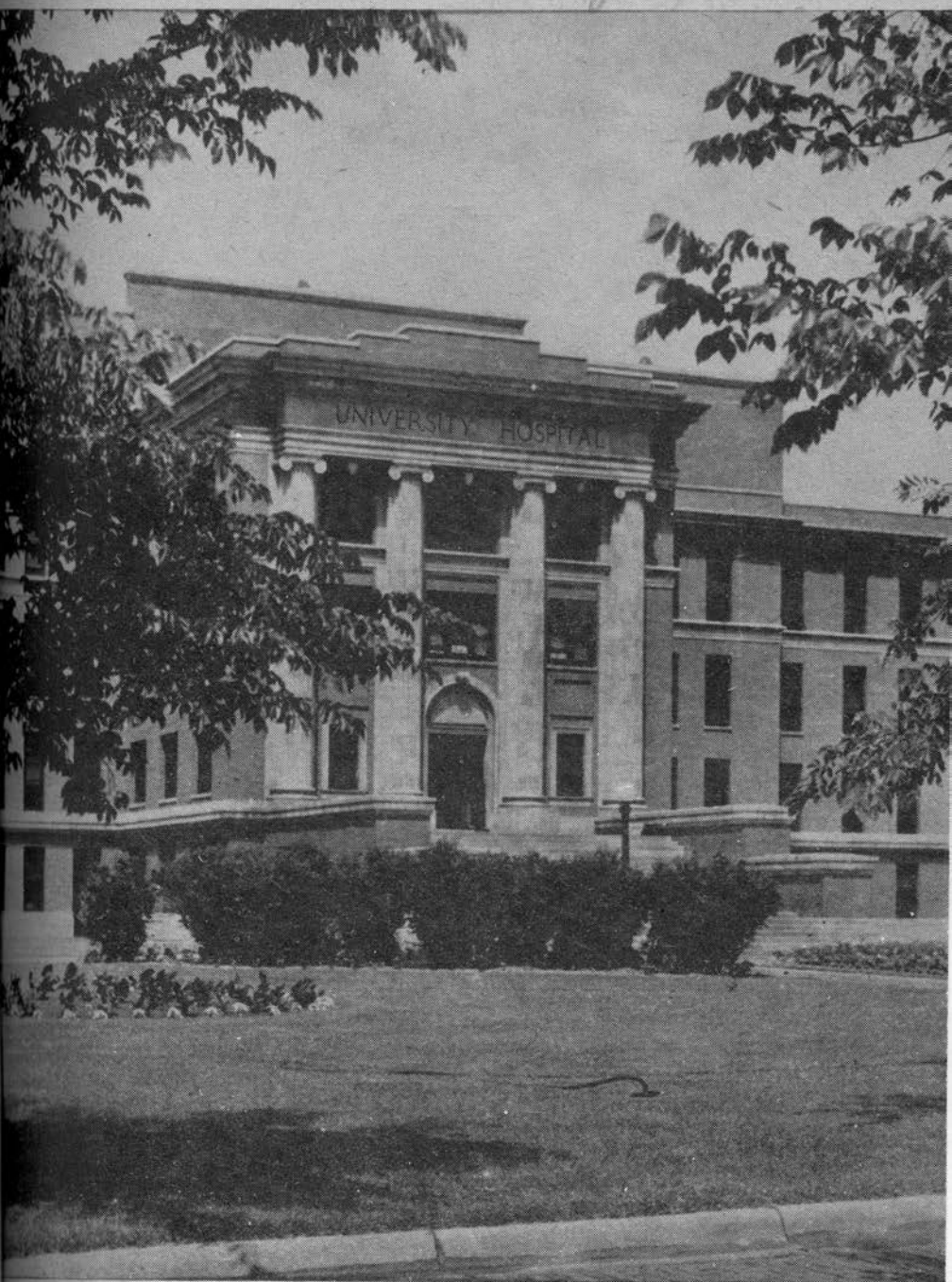
---

### Recommended Citation

University of Nebraska College of Medicine, "Bulletin of the University of Nebraska: Annual Catalog of the College of Medicine, 1942-1943" (1942). *Bulletin of the University of Nebraska: Annual Catalog of the College of Medicine*. 49.

[https://digitalcommons.unmc.edu/bulletin\\_com/49](https://digitalcommons.unmc.edu/bulletin_com/49)

This Book is brought to you for free and open access by the Bulletins and Catalogs at DigitalCommons@UNMC. It has been accepted for inclusion in Bulletin of the University of Nebraska: Annual Catalog of the College of Medicine by an authorized administrator of DigitalCommons@UNMC. For more information, please contact [digitalcommons@unmc.edu](mailto:digitalcommons@unmc.edu).



1942 COLLEGE OF MEDICINE 1943



# *College of Medicine*

ANNOUNCEMENT 1942-1943

SERIES XLVII

NUMBER 3

FEBRUARY 14

1 9 4 2

---

PUBLISHED BY THE UNIVERSITY AT LINCOLN

Issued weekly in March, April, and May; semimonthly in February and June; and monthly in January, August, September, and October. Entered at the postoffice at Lincoln, Nebraska, as second-class matter under act of Congress, August 24, 1912.

# Revised Calendar—War Emergency

## College of Medicine

Effective June 12, 1942

### FIRST YEAR (June 12, 1942-March 13, 1943)

June 12, Friday	Registration
June 15, Monday	First semester classes begin
July 18-August 3, Saturday noon to 8 a.m., Monday	Vacation
August 22, Saturday	First eight weeks end
October 17, Saturday	Second eight weeks end
October 19-24, Monday through Saturday	First semester examinations
October 24-November 2, Saturday noon to 8 a.m. Monday	Vacation
November 2, Monday	Second semester classes begin
December 19-January 4, 1943, Saturday noon to 8 a.m. Monday	Christmas vacation
January 9, Saturday	First eight weeks end
March 6, Saturday	Second eight weeks end
March 8-13, Monday through Saturday	Second semester examinations
March 13-26, Saturday noon to 8 a.m. Friday	Spring vacation

### SECOND YEAR (March 26, 1943-December 11, 1943)

March 26, Friday	Registration
March 29, Monday	First semester classes begin
May 22, Saturday	First eight weeks end
July 3-26, Saturday noon to 8 a.m. Monday	Vacation
August 7, Saturday	Second eight weeks end
August 9-14, Monday through Saturday	First semester examinations
August 16, Monday	Second semester classes begin
October 9, Saturday	First eight weeks end
December 4, Saturday	Second eight weeks end
December 6-11, Monday through Saturday	Second semester examinations
December 11-31, Saturday noon to 8 a.m. Friday	Christmas vacation

### THIRD YEAR (December 31, 1943-September 23, 1944)

December 31, Friday	Registration
January 3, 1944, Monday	First semester classes begin
February 26, Saturday	First eight weeks end
April 22, Saturday	Second eight weeks end
April 24-29, Monday through Saturday	First semester examinations
April 29-May 8, Saturday noon to 8 a.m. Monday	Spring vacation
May 8, Monday	Second semester classes begin
July 1, Saturday	First eight weeks end
July 1-24, Saturday noon to 8 a.m. Monday	Vacation
September 16, Saturday	Second eight weeks end
September 18-23, Monday through Saturday	Second semester examinations



FOURTH YEAR (September 29, 1944-June 9, 1945)

September 29, Friday	Registration
October 2, Monday	First semester classes begin
November 25, Saturday	First eight weeks end
December 23-January 8, 1945, Saturday noon to 8 a.m. Monday	Christmas vacation
February 3, Saturday	Second eight weeks end
February 5-10, Monday through Saturday	First semester examinations
February 12, Monday	Second semester classes begin
April 7, Saturday	First eight weeks end
June 2, Saturday	Second eight weeks end
June 4-9, Monday through Saturday	Second semester examinations

## Corrections Referring to Fees

**Page 11, paragraph 3:** "Upon receipt of notice that an application has been accepted for entrance to the College of Medicine, he is required to send a deposit of \$25.00 to be applied to matriculation and as part of payment of the tuition fee of the first term at the time of registration, or to be forfeited if the applicant fails to register in the College of Medicine by June 15."

**Page 14, "Fees" should read:**

**Incidental:**

Medical Service, each semester ..... \$ 3.00

**Page 15, add to paragraph 9:** "Effective June 1, 1942, microscopes may be rented at the rate of \$15.00 each per year, under rules and regulations to be formulated by the faculty and the Dean of the College of Medicine."

## Calendar 1942-1943\*

### 1942 Summer School

June 8 to July 15	Short Session
June 8 to July 31	Long Session

### First Semester 1942-1943

Sept. 9-19, Wednesday to Saturday	Medical examinations
Sept. 17, Thursday, 9 a.m.	Convocation, entering students
Sept. 17, 18, 19, Thursday, Friday, Saturday	Guidance and validation examinations, new students
Sept. 18, Friday	Chancellor's reception to students
Sept. 21, 22, 23, Monday, Tuesday, Wednesday	General registration, including changes in spring registration
Sept. 24-Oct. 3, Thursday to Saturday noon	Registration, Graduate College
Sept. 24, Thursday	First semester classes begin
Sept. 24, Thursday, 4 p.m.	Freshman Convocation
Sept. 25, Friday	Registration, College of Medicine
Sept. 28, Monday	College of Medicine classes begin
Oct. 24, Saturday	First scholastic reports
Nov. 11, Wednesday, 10 a.m. to 12 noon	Armistice holiday
Nov. 25-30, Wednesday noon to 8 a.m. Monday	Thanksgiving vacation
Dec. 5, Saturday	Second scholastic reports
Dec. 13, Sunday	Christmas Oratorio
Dec. 23-Jan. 4, Wednesday noon to 8 a.m. Monday	Christmas vacation
Jan. 11-16, Monday to Saturday noon	General registration, second semester, for students attending first semester
Jan. 25-30, Monday to Saturday	First semester examinations

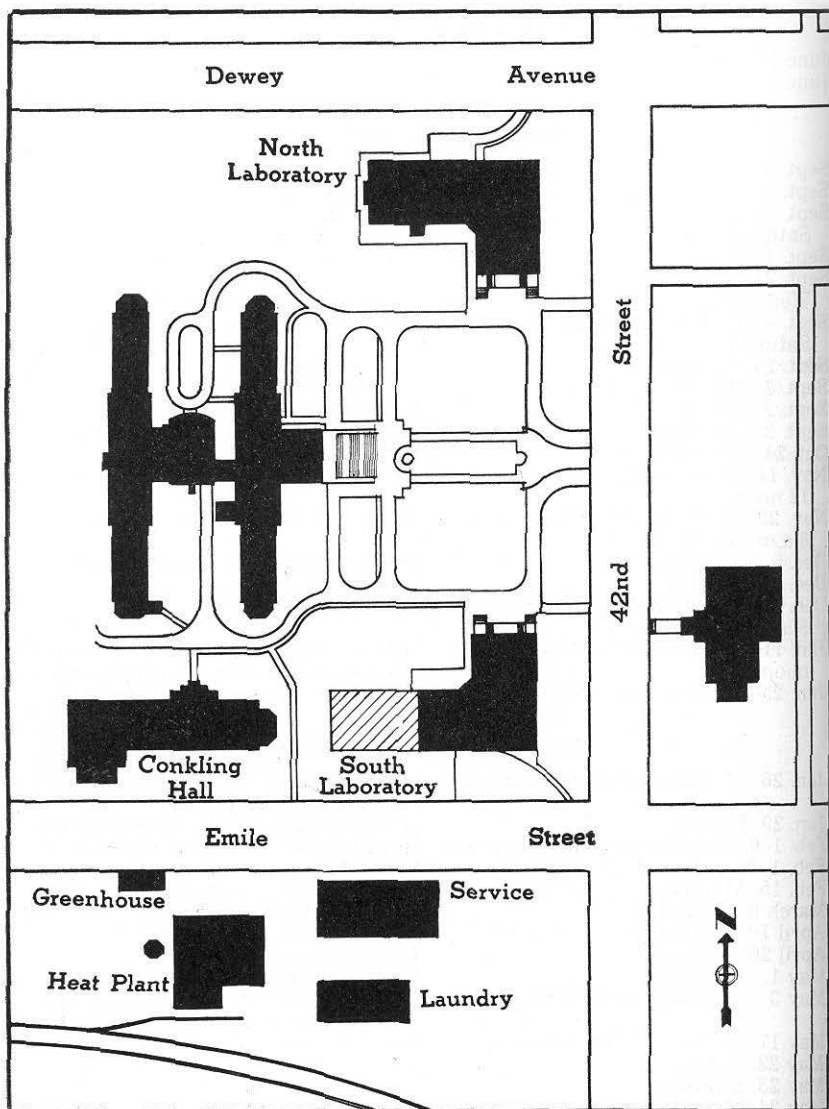
### Second Semester 1942-1943

Jan. 26-27, Tuesday and Wednesday	Guidance and validation examinations, new students
Jan. 29, Friday	General registration, new students
Feb. 1-6, Monday to Saturday noon	Registration, Graduate College
Feb. 1, Monday	Second semester classes begin
Feb. 15, Monday	Charter Day
March 6, Saturday	First scholastic reports
April 10, Saturday	Second scholastic reports
April 20, Tuesday	Honors Convocation
May 1, Saturday	Premedic Day
May 3-8, Monday to Saturday	Registration for fall semester, students attending second semester
May 17-22, Monday to Saturday	Second semester examinations
May 22, Saturday	Alumni Day
May 23, Sunday	Baccalaureate sermon
May 24, Monday	Seventy-second annual commencement

### 1943 Summer School

June 7 to July 14	Short Session
June 7 to July 30	Long Session

\* Subject to change during the War Emergency.



### COLLEGE OF MEDICINE CAMPUS

The College of Medicine and School of Nursing are situated at the University Hospital, in Omaha, at 42nd street and Dewey avenue. All the buildings are modern, the oldest, North Laboratory, having been erected in 1912.

## THE UNIVERSITY OF NEBRASKA

The University of Nebraska was chartered by an act of the state legislature on February 15, 1869. It is the state's major institution of higher learning. Its "general government" is vested by the Constitution of Nebraska in an elected board of six regents, each serving for a six-year term and each representing one of what were formerly the six congressional districts (now generally referred to as regential districts).

The University now consists of a Junior Division; ten colleges—Agriculture, Arts and Sciences, Business Administration, Dentistry, Engineering, Graduate, Law, Medicine, Pharmacy, and Teachers; four schools—Fine Arts, Social Work (graduate), Journalism, and Nursing; and the two Divisions of Conservation and Survey and University Extension. A Summer School is maintained for eight weeks each summer.

Nebraska like other states enjoys the privileges of close cooperation with the federal government. The University is recognized under provisions of the Land Grant Act of 1862 and numerous subsequent acts related thereto. Funds made available by these acts supplement state funds authorized by the Nebraska Legislature for the support of the University, and are under the supervision of the Board of Regents.

The University has attained an enviable position among the nation's most highly recognized institutions of higher learning. It holds full membership in the Association of American Universities of which there are but 33 member institutions. It is also privileged to claim membership in the Association of Land Grant Colleges, the National Association of State Universities, the Association of American Colleges, the Association of American Universities, and the North Central Association of Colleges and Secondary Schools while its various subdivisions have been equally well recognized. Students and graduates of the University are admitted to all collegiate institutions and their credits are accepted without question.

Students from no less than 46 states and some 10 foreign countries were matriculated in the University during the past year. With approximately 6,500 students of collegiate rank in full-time attendance and approximately 12,000 enrolled in all classifications, and a faculty of more than 400, the University of Nebraska ranks twenty-sixth in size in the United States and twelfth among state universities.

## ADMINISTRATION

### The Board of Regents

	Term Expires
ROBERT W. DEVOE, Lincoln.....	January 1943
WILLIAM E. REED, Omaha.....	January 1943
FRANK M. JOHNSON, Lexington, President.....	January 1945
STANLEY D. LONG, Grand Island.....	January 1945
CHARLES Y. THOMPSON, West Point.....	January 1947
MARION A. SHAW, David City.....	January 1947
LORING ELLIS GUNDERSON, Lincoln, Corporation Secretary	

### The University

- CHAUNCEY SAMUEL BOUCHER, Ph.D., LL.D., Chancellor of the University.  
 CHARLES WILLIAM McCORKLE POYNTER, B.Sc., M.D., Dean of the College of Medicine.  
 GEORGE WALTER ROSENLOF, Ph.D., Registrar, University Examiner, and Director of Admissions. (*Secretary of the Faculties.*)  
 THEOS JEFFERSON THOMPSON, Ph.D., LL.D., Dean of Student Affairs.  
 VERNA HYDER BOYLES, A.B., Dean of Women.

## COLLEGE OF MEDICINE

*Degrees of Doctor of Medicine, Bachelor of Science in Medicine, Bachelor of Science in Nursing, and Graduate Nurse.*

<p>DEPARTMENT OF ANATOMY J. S. Latta, Chairman</p> <p>DEPARTMENT OF BIOCHEMISTRY S. Morgulis, Chairman</p> <p>DEPARTMENT OF DERMATOLOGY AND SYPHILOLOGY C. C. Tomlinson, Chairman</p> <p>DEPARTMENT OF INTERNAL MEDICINE R. W. Bliss, Chairman</p> <p>DEPARTMENT OF MEDICAL JURISPRUDENCE</p> <p>DEPARTMENT OF NEURO-PSYCHIATRY G. A. Young Sr., Chairman</p> <p>DEPARTMENT OF OBSTETRICS AND GYNECOLOGY E. C. Sage, Chairman</p> <p>DEPARTMENT OF OPHTHALMOLOGY W. H. Stokes, Chairman</p>	<p>DEPARTMENT OF ORTHOPEDIC SURGERY R. D. Schrock, Chairman</p> <p>DEPARTMENT OF OTORHINOLARYNGOLOGY W. P. Wherry, Chairman</p> <p>DEPARTMENT OF PATHOLOGY AND BACTERIOLOGY H. E. Eggers, Chairman</p> <p>DEPARTMENT OF PEDIATRICS J. A. Henske, Chairman</p> <p>DEPARTMENT OF PHYSIOLOGY AND PHARMACOLOGY A. R. McIntyre, Chairman</p> <p>DEPARTMENT OF RADIOLOGY AND PHYSICAL THERAPY H. B. Hunt, Chairman</p> <p>DEPARTMENT OF SURGERY J. J. Keegan, Chairman</p> <p>DEPARTMENT OF UROLOGY E. Davis, Chairman</p>
---	--

- PAYSON STONE ADAMS, B.Sc. in Med., M.D., Instructor in Urology.  
 JOHN FRANKLIN ALLEN, B.Sc., M.D., Professor of Clinical Medicine.  
 MAINE C. ANDERSEN, M.D., Assistant Professor of Medicine.  
 HARLEY ERIC ANDERSON, B.Sc. in Med., M.D., Instructor in Obstetrics.  
 CHARLES PRESTON BAKER, M.A., M.D., Instructor in Pathology and Bacteriology.  
 CLARENCE FREDERICK BANTIN, B.Sc., M.D., Instructor in Pediatrics.  
 ELMER WILLIAM BANTIN, B.Sc., M.D., Instructor in Pediatrics.  
 FRANCIS J. BEAN, A.B., M.D., Assistant Superintendent of Hospital and Assistant Professor of Medicine.  
 MEYER BEBER, Ph.D., M.D., Instructor in Internal Medicine.  
 ABRAM ELTING BENNETT, B.Sc., M.D., Assistant Professor of Neuro-Psychiatry.  
 ARTHUR LAWRENCE BENNETT, Ph.D., M.D., Professor of Physiology and Pharmacology.  
 GORDON NEWALL BEST, B.Sc., M.D., Instructor in Medicine.  
 RUSSELL ROLLAND BEST, B.Sc., M.D., Assistant Professor of Anatomy and Associate Professor of Surgery.  
 JAMES DEWEY BISGARD, A.B., M.D., Assistant Professor of Surgery.  
 RODNEY WALDO BLISS, A.B., M.D., Professor of Medicine. (*Chairman of Department of Internal Medicine.*)  
 JOHN GRIERSON BRAZER, A.B., M.D., Instructor in Medicine.  
 ALFRED JEROME BROWN, A.B., M.D., Professor of Surgery.  
 WILLIS E. BROWN, M.Sc., M.D., Assistant Professor of Obstetrics and Gynecology.  
 WILLIAM FREDERICK CALLFAS, C.M., M.D., Professor of Otorhinolaryngology, Emeritus.  
 OLIN JAMES CAMERON, M.S., M.D., Assistant Professor of Dermatology and Syphilology.  
 PAUL T. CASH, M.D., Instructor in Neuro-Psychiatry.  
 WALDRON ALVIN CASSIDY, A.B., M.D., Assistant Professor of Otorhinolaryngology and Consultant for Bronchoscopy.  
 GEORGE LEONARD CLARK, B.Sc., M.D., Instructor in Pediatrics.  
 MILDRED JOHNSON CLARK, M.D., Clinical Assistant in Obstetrics.  
 AUGUSTUS DAVID CLOYD, A.B., M.D., Instructor in Internal Medicine.  
 ROBERT MARSHALL COLLINS, B.Sc. in Med., M.D., Instructor in Obstetrics and Gynecology.  
 FRANK MATTHEW CONLIN, M.D., Professor of Clinical Medicine.  
 EDWIN DAVIS, B.A., M.D., Professor of Urology. (*Chairman of Department.*)  
 HERBERT HAYWOOD DAVIS, A.B., M.D., Associate Professor of Surgery.  
 JOHN CALVIN DAVIS JR., A.B., M.D., Assistant Professor of Otorhinolaryngology.  
 CARMELO DISTEFANO, B.Sc., M.D., Clinical Assistant in Urology.  
 FRANK LOWELL DUNN, A.M., M.D., Assistant Professor of Clinical Physiology and Associate Professor of Internal Medicine.  
 HAROLD EVERETT EGGERS, A.M., M.D., Professor of Pathology and Bacteriology. (*Chairman of Department.*)  
 DAVID PRESSLEY FINDLEY, M.D., Instructor in Obstetrics and Gynecology.  
 CHARLES FRANDSEN, B.Sc., M.D., Instructor in Medicine.  
 FREDERIC D. GARRETT, Ph.D., Instructor in Anatomy.  
 JOHN LEO GEDGOUD, B.Sc., M.D., Assistant Professor of Pediatrics.  
 HAROLD GIFFORD JR., B.Sc. in Med., M.D., Assistant Professor of Ophthalmology.  
 \*ARTHUR M. GREENE, M.Sc., M.D., Instructor in Medicine.  
 †MANUEL GRODINSKY, B.Sc., M.D., Associate Professor of Anatomy and Associate Professor of Surgery.

\* Absent on leave June 1, 1941 to May 31, 1942.

† Absent on leave September 1, 1941 to August 31, 1942.



- MILLARD F. GUNDERSON, Ph.D., Associate Professor of Pathology and Bacteriology.
- LYNN THOMPSON HALL, B.Sc., M.D., Professor of Clinical Medicine in Charge of Therapeutics.
- WILLIAM RUDOLPH HANSA, B.Sc., M.D., Instructor in Orthopedic Surgery.
- ERNEST W. HANCOCK, A.B., M.D., Instructor in Pediatrics.
- WILLIAM PORTER HANEY, M.D., Assistant Professor of Otorhinolaryngology.
- LOUIS EVERETT HANISCH, B.Sc., M.D., Instructor in Surgery.
- VINCENT CHARLES HASCALL, LL.B., Instructor in Medical Jurisprudence.
- LYMAN HOWARD HEINE, A.B., M.D., Clinical Assistant in Otorhinolaryngology.
- JOSEPH A. HENSKE, M.D., Professor of Pediatrics. (*Chairman of Department.*)
- LLOYD OLIVER HOFFMAN, M.D., Instructor in Obstetrics and Gynecology.
- EDWARD AGUSTUS HOLYOKE, Ph.D., M.D., Associate Professor of Anatomy.
- HOWARD B. HUNT, A.M., M.D., Professor of Radiology and Physical Therapy. (*Chairman of Department.*)
- HERBERT P. JACOBI, A.B., M.S., Ph.D., Instructor in Biochemistry.
- HERMAN MILTON JAHR, B.Sc., M.D., Associate Professor of Pediatrics. (*Secretary of Department.*)
- HERMAN FRANK JOHNSON, M.D., Assistant Professor of Orthopedics and Assistant Professor of Surgery in Charge of Division of Fractures.
- AUGUST FREDERICK JONAS, M.D., Instructor in Surgery.
- JOHN HEWITT JUDD, B.Sc., M.D., Associate Professor of Ophthalmology.
- JOHN JAY KEEGAN, A.M., M.D., Professor of Neurological Surgery. (*Chairman of Department of Surgery.*)
- ESLEY JOSEPH KIRK, A.M., M.D., Assistant Professor of Medicine, in Charge of Clinical Clerk Service.
- GEORGE JOHN KLOK, A.B., B.Sc., M.D., Instructor in Pediatrics.
- JOHN STEPHENS LATTA, Ph.D., Professor of Anatomy. (*Chairman of Department.*)
- JOHN DEWEY LEMAR, M.Sc., M.D., Assistant Professor of Public Health.
- RAYMOND GERALD LEWIS, A.B., B.Sc., M.D., Instructor in Medicine.
- JAMES S. McAVIN, Ph.G., M.D., Instructor in Anesthesia and Radiology.
- JOSEPH D. MCCARTHY, M.D., Assistant Professor of Medicine.
- LEON STEINER McGOOGAN, A.B., M.D., Assistant Professor of Obstetrics and Gynecology. (*Secretary of Department.*)
- ARCHIBALD ROSS McINTYRE, Ph.D., M.D., Professor of Physiology and Pharmacology. (*Chairman of Department.*)
- CHARLES WILLIAM McLAUGHLIN JR., B.Sc. in Med., M.D., Assistant Professor of Surgery.
- ERNEST LYNN MACQUIDDY, A.B., M.D., Associate Professor of Medicine.
- MORRIS MARGOLIN, A.B., M.D., Instructor in Medicine.
- OTIS WALLACE MARTIN, B.Sc., M.D., Instructor in Urology.
- CLAUDE WILLIAM MASON, M.D., Assistant Professor of Medicine, in Charge of Tropical Medicine.
- WILLSON BRIDGES MOODY, A.B., M.D., Associate Professor of Medicine.
- CHARLES FRANKLIN MOON, B.Sc., M.D., Assistant Professor of Obstetrics and Gynecology.
- JOHN CLYDE MOORE JR., A.B., B.Sc., M.D., Professor of Pediatrics.
- HAROLD SMITH MORGAN, M.D., Instructor in Obstetrics and Gynecology.
- SERGIVS MORGULIS, A.M., Ph.D., Professor of Biochemistry. (*Chairman of Department.*)
- WILLIAM HOWARD MORRISON, B.Sc. in Med., M.D., Instructor in Ophthalmology.
- PAUL NEWTON MORROW, A.B., M.D., Instructor in Pediatrics.
- REUBEN ALLYN MOSER, A.B., M.D., Associate Professor of Medicine and Director of Medical Clinic at the Dispensary.

- FLOYD JOSHUA MURRAY, B.Sc., M.D., Instructor in Surgery.  
OLIVER CLARKE NICKUM, A.B., M.D., Instructor in Medicine.  
FREDERICK W. NIEHAUS, B.Sc., M.D., Associate Professor of Medicine.  
JOHN RUDOLPH NILSSON, M.D., Professor of Industrial Surgery.  
CHARLES AUSTIN OWENS, B.Sc., M.D., Assistant Professor of Urology.  
RUTH POHLE, A.B., Supervisor in Hospital Laboratory.  
CHARLES WHITNEY POLLARD, A.B., M.D., Professor of Obstetrics and Gynecology, Emeritus.  
JOHN BEEKMAN POTTS, M.D., Professor of Otorhinolaryngology, Emeritus.  
CHARLES WILLIAM McCORKLE POYNTER, B.Sc., M.D., Dean of the College of Medicine, Professor of Anatomy, and Superintendent of University Hospital.  
GEORGE PAYTON PRATT, B.Sc., M.D., Professor of Clinical Medicine.  
GEORGE WINTHROP PRICHARD, A.B., M.D., Instructor in Medicine.  
DANIEL THOMAS QUIGLEY, M.D., Instructor in Surgery.  
ROBERT HOUSTON RASGORSHEK, M.D., Assistant Professor of Ophthalmology.  
JOHN PHILBROOK REDGWICK, B.Sc., M.D., Clinical Assistant in Obstetrics.  
CHARLES O'NEILL RICH, B.Sc., M.D., Associate Professor of Surgery.  
GEORGE EDWIN ROBERTSON, B.Sc. in Med., M.D., Assistant Professor of Pediatrics.  
PHILIP L. ROMONEK, M.D., Instructor in Otorhinolaryngology.  
CLARENCE RUBENDALL, B.Sc., M.D., Associate Professor of Otorhinolaryngology.  
ABRAHAM SROL RUBNITZ, A.B., M.D., Assistant Professor of Medicine.  
EARL CUDDINGTON SAGE, B.Sc., M.D., Professor of Obstetrics and Gynecology. (*Chairman of Department.*)  
ROBERT D. SCHROCK, A.B., M.D., Professor of Orthopedic Surgery. (*Chairman of Department.*)  
JOHN CHARLES SHARPE, B.Sc. in Med., M.D., Instructor in Medicine and Technical Assistant in Urology and Bacteriology.  
WILLIAM LETE SHEARER, A.B., D.D.S., M.D., Professor of Surgery, in Charge of Oral and Plastic Surgery.  
EUGENE EARL SIMMONS, B.Sc., M.D., Instructor in Medicine.  
GEORGE A. SKINNER, M.D., Professor of Public Health, Emeritus.  
JOHN M. SLACK, A.B., M.Sc., Instructor in Pathology and Bacteriology.  
CLARENCE THOMPSON SPIER, A.B., LL.B., Instructor in Medical Jurisprudence.  
OLGA FRANCES STASTNY, M.D., Instructor in Obstetrics and Gynecology.  
ROBERT JAMES STEARNS, M.D., Instructor in Gynecology.  
ABRAHAM A. STEINBERG, B.Sc., M.D., Instructor in Ophthalmology.  
HARRY BAYLISS STOKES, M.D., Instructor in Otorhinolaryngology.  
WILLIAM HERMAN STOKES, M.D., Professor of Ophthalmology. (*Chairman of Department.*)  
WILLIS HARVEY TAYLOR, B.Sc., M.D., Professor of Clinical Obstetrics and Gynecology.  
AMOS THOMAS, LL.B., Instructor in Medical Jurisprudence.  
CHARLES EDWARD THOMPSON, B.Sc., M.D., Instructor in Internal Medicine.  
CHESTER QUAY THOMPSON, B.Sc., M.D., Assistant Professor of Medicine.  
WARREN THOMPSON, B.Sc., M.D., Associate Professor of Medicine.  
PAUL WAYNE TIPTON, B.Sc. in Med., M.D., Clinical Assistant in Orthopedic Surgery.  
JAMES PERRY TOLLMAN, B.Sc., M.D., Professor of Clinical Pathology.  
CHARLES CREIGHTON TOMLINSON, M.D., Professor of Dermatology and Syphilology. (*Chairman of Department.*)  
CHARLES ARCHIBALD TOMPKINS, B.Sc. in Med., M.D., Instructor in Pediatrics.  
DONALD CLAY VROMAN, B.Sc. in Med., M.D., Instructor in Obstetrics and Gynecology.  
OTIS WADE, Ph.D., Associate Professor of Zoology and Adviser to Pre-medical Students.

CHESTER HILL WATERS SR., B.Sc., M.D., Professor of Surgery.  
 CHESTER HILL WATERS JR., A.B., M.D., Instructor in Orthopedics.  
 JOSEPH A. WEINBERG, M.Sc., M.D., Associate Professor of Surgery.  
 WALTER JOSEPH WHERRY, M.D., Assistant Instructor in Otorhinolaryngology.  
 WILLIAM PENALUNA WHERRY, M.D., Professor of Otorhinolaryngology.  
 (*Chairman of Department.*)  
 HARRISON ALONZO WIGTON, B.Sc., M.D., Associate Professor of Neuro-Psychiatry.  
 VIOLET WILDER, Ph.D., Technician in Obstetrics and Gynecology with rank of Instructor in Biochemistry.  
 WILLIAM ALBERT WILLARD, Ph.D., Professor of Anatomy.  
 \*DONALD JASPER WILSON, A.B., B.Sc., M.D., Assistant Professor of Dermatology and Syphilology.  
 WILLIS DEAN WRIGHT, B.Sc., M.D., Instructor in Medicine.  
 RAYMOND JOSEPH WYRENS, A.B., M.D., Instructor in Medicine.  
 GEORGE ALEXANDER YOUNG SR., M.D., Professor of Neuro-Psychiatry.  
 (*Chairman of Department.*)  
 GEORGE ALEXANDER YOUNG JR., M.D., Instructor in Medicine.  
 RICHARD HARTE YOUNG, M.S., M.D., Assistant Professor of Neuro-Psychiatry.

INTERNS: Bach, Bohnen, Eagle, Gridley, Harms, Krieg, McElroy, Nutzman, Peck, Reiner, Senter, Wendland.

GRADUATE ASSISTANTS: Glenn, Hermann, King, Nelson.

RESIDENTS: Malony—*Obstetrics and Gynecology*; Kraybill—*Pathology*; Neely—*Radiology*; Cochran and Knauff—*Juniors*.

#### Committees of the Faculty

CURRICULUM—Doctors Latta, *Chairman*, A. L. Bennett, Conlin, H. H. Davis.

DISPENSARY—Doctors Henske, *Chairman*, F. L. Dunn, McGoogan, McLaughlin.

EXAMINATIONS—Doctors A. L. Bennett, *Chairman*, Adams, W. E. Brown, Gedgoud, Hamsa, Hunt, C. E. Thompson, C. Q. Thompson, Waters.

EXECUTIVE—Chairmen of Departments.

FEVER THERAPY RESEARCH—Doctors A. E. Bennett, *Chairman*, Dunn, Owens, Simmons.

FORMULARY—Doctors Hall, *Chairman*, Bean, Cameron, J. C. Davis, McIntyre, C. Q. Thompson.

GRADUATE STUDIES—Doctors McIntyre, *Chairman*, Gunderson, Morgulis.

INTERN—Doctors Warren Thompson, *Chairman*, Bean, McGoogan, McLaughlin.

LIBRARY—Doctors Latta, *Chairman*, A. J. Brown, McIntyre, Pratt, Mr. Moe.

STAFF CLINICS—Doctors McCarthy, *Chairman*, H. H. Davis, Tollman.

STUDENT—Doctors Eggers, *Chairman*, A. L. Bennett, Bisgard, Latta, Waters, R. H. Young.

STUDENT ASSISTANCE—Doctors Willard, *Chairman*, A. L. Bennett, Tollman.

UNIVERSITY HOSPITAL—Doctors Hunt, *Chairman*, Keegan, Moore, Tollman, the Superintendent.

#### Administration

FRANCIS J. BEAN, A.B., M.D., Assistant Superintendent of University Hospital and Assistant Professor of Medicine.

LEAH BEDWELL, M.Sc., Associate Professor of Dietetics and Director of Dietetics.

CHARLOTTE BURGESS, R.N., Ph.B., Director of the School of Nursing and Professor of Nursing.

JOSEPHINE CHAMBERLIN, R.N., Superintendent of Dispensary.

\* Absent on leave October 1, 1941 to September 30, 1942.

WILLIAM G. EVERS, Cashier.

PHILIP SEVERIN MOE, B.Sc., Librarian of Medical College Library.

HELEN PITZER, Secretary to the Dean.

ANNE STUART, Record Librarian, University Hospital.

RUBEN B. SAXON, B.Sc. in M.E., Assistant Operating Superintendent at the College of Medicine.

## COLLEGE OF MEDICINE

**History.**—The first move for the establishment of a college of medicine in the state of Nebraska came February 15, 1869, when the Nebraska state legislature approved the formation of the University of Nebraska at Lincoln, which was to include a college of medicine. Nothing was done toward the establishment of this college until 1883, when the University of Nebraska Medical College was established at Lincoln. The legislature of 1887 withdrew its appropriation, necessitating discontinuance of the college on May 19, 1887. In 1902 the Omaha Medical College, incorporated at Omaha in 1881, entered into an agreement of affiliation with the University of Nebraska whereby the first two years of a four-year medical course would be given at Lincoln and the last two years in Omaha. By this move the college changed its name to the University of Nebraska College of Medicine and became an integral part of the State University. Since 1913 the entire four-year course has been offered at Omaha.

**Standing.**—Under the appropriation made by the legislature during the period since 1913, the Board of Regents has devoted more than a million and a half dollars to the erection and equipment of buildings for the Medical College. These buildings and their equipment provide for the student activities of the work of both the basic sciences and the clinical years. The University Hospital was built to provide for 250 beds in the various services organized for medical teaching.

The College of Medicine meets the requirements of the most exacting state examining and licensing boards. Its diploma grants the holder all privileges accorded to graduates of any medical college in the United States. It is a member of the Association of American Medical Colleges and has a Class A rating by the American Medical Association. It maintains the highest standards in instructional staff and content of courses.

The course of study in medicine covers four years of 36 weeks each. The first two years in medicine include those laboratory sciences which form the basis for the clinical studies of the last two years. The clinical application of laboratory subjects is emphasized and introductory clinical subjects are given in the second year. The last two years are spent largely in the study of disease in clinics of the hospital and out-patient department. The objective method is followed in laboratories and clinical instruction, with constant reference to the facts acquired from earlier laboratory work. In all courses students are encouraged to do the largest amount of individual work consistent with the discipline of the curriculum.

In the plan of instruction throughout the four years students are arranged in small groups to meet both laboratory and clinical instructors. This tends to overcome the objections which are so frequently urged by students where they are met in large classes for didactic exercises.

### Admission to the College of Medicine

**Credentials.**—For admission to the College of Medicine, applicants must present official credentials as follows:

**HIGH SCHOOL.**—Graduates of accredited high schools may have full admission with 12 properly selected entrance units completed in the senior high school (grades 10, 11, 12) or with 15 entrance units on the four-year high school basis.

Six units from the senior high school shall be in the fields of English, foreign language, mathematics, natural sciences, and the social studies with a minimum of two units in English, two in mathematics (one each of algebra and geometry or an equivalent combination of general mathematics, algebra and geometry), and two in a foreign language. One unit of foreign language and one unit of mathematics completed below grade 10, while not counting toward the six units in the five fields mentioned above, may be used in fulfilling the specific requirements in these fields.

**COLLEGE.**—The following college subjects are required of all applicants:

	<i>Semester Hours</i>
Chemistry (4 hours of which shall be organic).....	12
Physics .....	8
Biology .....	8
English .....	6
Electives .....	56
Total.....	90

The college course must include at least three years of work (90 semester hours) in an approved college of arts and sciences or university. The students are urged to elect a broad list of courses including the humanities as well as the basic sciences. This might well include sociology, psychology, history, advanced English, and a major foreign language, preferably German, to be carried through two or three years unless it has been begun in high school.

This number of hours must not include subjects such as anatomy, histology, embryology, physiology, biochemistry, medical bacteriology, nor any other subject which is taken in Medical College nor credits offered from professional schools which do not regularly receive Arts College credit.

Each student applying for admission to the College of Medicine is required to take the aptitude test as provided by the Association of American Medical Colleges, except where specifically excused by authorities of the college.

By meeting group and major and minor requirements, a degree of Bachelor of Arts or Bachelor of Science can be received on the satisfactory completion of the first year in Medical College.

**Application for Admission.**—Applications should be made to the Dean of the University of Nebraska College of Medicine, 42nd and Dewey avenue, Omaha, Nebraska, who will furnish a printed application blank and two character reference blanks. The latter are to be filled out preferably by a professor of zoology and a professor of chemistry. A personal interview with the dean or the Committee on Admissions is very desirable.

Applications should be submitted early in April and if presented after June 1 will be considered only at the discretion of the college. Applica-

tions may be presented upon completion of five semesters of premedical work, with indication of enrollment for the remaining necessary subjects during the sixth semester or summer school. A provisional acceptance will be given such a student if his record is satisfactory.

Admissions are on a selective basis, preferably being granted to residents of Nebraska. The number of admissions is limited and selection is based on character, scholarship, and promise of aptitude for the practice of medicine.

Upon receipt of notice that an applicant has been accepted for entrance to the College of Medicine, he is required to send a deposit of \$25 to be applied as part payment of the tuition fee of the first term at the time of registration, or to be forfeited if the applicant fails to register in the College of Medicine by October 1. A charge of \$5 may be made for evaluation of transcripts of nonresident students, such fees to be applied as part payment of tuition if applicant is accepted.

**Advanced Standing.**—Application for admission to advanced standing in the second and third medical year classes will be considered only from Class A schools. Applicants for admission must furnish evidence that they have satisfactorily completed courses equivalent in kind and amount to those taken by the class to which admission is sought, and must present also a letter of honorable dismissal. The University of Nebraska College of Medicine reserves the right in every case to give examinations in any or all subjects in which credit is requested. Such examinations, however, are given only in exceptional cases.

No student coming from another school will be allowed any privileges in this school which would have been denied him in the school which he leaves.

No student will be admitted to advanced standing in any class with a delinquency in any subject; nor may he become a candidate for graduation without spending the last two years in residence.

**Credit Requirements.**—In accordance with the recommendation of the Association of American Medical Colleges, the College of Medicine does not grant any time credit toward the Doctor of Medicine degree to holders of a bachelor's degree; this means that the total time spent by each student taking his medical degree must include as a minimum four years of registration in a medical college.

The granting of subject credit is at the discretion of the Committee on Credits, which may ask the chairman of any department in which credit is offered to certify as to the student's eligibility through such examination as he may reasonably impose. Admission to any class does not necessarily carry with it credit in all work previously done by the class, since the Committee on Credits has the right to demand satisfactory evidence of the completion of previous work in that subject equal to that required of the student of this College, and in case the work is not equal to such requirement the deficiency stands against the student as an "incomplete" until removed.

**Registration.**—A day at the beginning of each semester is set apart for registration. To promote prompt registration, a fee of \$3 is charged any student who, unless excused by the dean, seeks to register later than this day. A fee of \$1 is charged for reregistration. Any change whatever in a registration once made is considered as a reregistration. No work



done in the College of Medicine may be granted credit without proper registration. Eligibility for the degree of Doctor of Medicine requires registration in eight separate semesters. No regular student is registered for less than 12 hours a semester without the dean's permission, nor under any conditions for more than 18 hours. No student may add any subject to his schedule or drop from it any subject for which he has been regularly registered, without written permission from the dean. Students may not attend classes for which they are not registered.

Students desiring to use the work of the first two medical years for baccalaureate credit at the University of Nebraska must register in the College of Arts and Sciences until the necessary amount of college work is completed. Candidates for baccalaureate degrees in other institutions than the University of Nebraska may arrange with their colleges to accept transcripts of the work of the first two years in medicine to apply to such degrees, or otherwise satisfy the requirements of those institutions.

**Class Standing and Examination.**—The standing of a student in any course is determined by the instructor in charge of the subject through examinations, personal contact, and observation of routine work. The passing grade for subjects of the first and second medical years is 70 per cent and for the third and fourth medical years 75 per cent. A grade below passing constitutes a "failure."

A course, which for a good reason has not been completed, may, if of passing grade, be marked "incomplete." Such incomplete must be removed by the end of the first semester in which the course is again offered or it becomes a failure.

Attendance at less than 80 per cent of the scheduled lectures and recitations or 85 per cent of the scheduled laboratory and clinical hours constitutes a failure in any course and shall be so reported.

A failed subject must be absolved by reregistration in and satisfactory completion of the subject at or before the next offering in the college schedule. A reregistered subject takes precedence over all other subjects. A student who has failed twice here or elsewhere in the same subject is not eligible for registration in that subject at this college.

A student who fails to make an average of 75 per cent in all of the subjects of either the first or second medical year shall be reexamined in all of the subjects of the respective year by an examining committee before being permitted to register for the following year.

At the end of the senior year a committee examination and thesis will be required before recommendation for graduation.

Whenever at the end of any semester a student is delinquent in half or more of his registered hours, his name is automatically dropped from the rolls of the College of Medicine and his registration cancelled.

**Absence or Withdrawal.**—The Dean of the College of Medicine is the adviser of all students in the College of Medicine. A leave of absence for a short time may be granted a student by the dean of his college. This is merely a justification for absence and not an excuse from any work. If a student in good and honorable standing finds it necessary to withdraw from the University before the close of a semester, the dean grants him permission to do so. If he is in good standing and is not a minor he is given honorable dismissal from the University at his own request; if a minor, at the request of his parents or guardian.

## Requirements for Graduation

The degree of Doctor of Medicine is granted only under the following conditions:

1. The candidate must be at least 21 years of age.
2. He must possess a good moral reputation.
3. He must have complied with all the requirements of admission.
4. He must have pursued the study of medicine for at least four years and must have passed all required courses and examinations and have received credit for at least four full years of instruction at medical colleges in good standing. The last two years must have been taken in this institution.

## Combined Academic and Medical Courses

**Course Leading to the Degrees of Bachelor of Arts or Bachelor of Science and Doctor of Medicine.**—By completing the group requirements of the College of Arts and Sciences and two minors (or one major) and by the use of the subjects of the first year of the medical course as a major, the student is enabled to receive at the end of four years the degree of Bachelor of Arts or Bachelor of Science in the College of Arts and Sciences.

**Course Leading to the Degree of Bachelor of Science in Medicine.**—Students presenting premedical college credits of high standard and who have completed the first two years in medicine, the last year of which shall be in residence in this institution, but who have not fulfilled the requirements for the degree of Bachelor of Science in the College of Arts and Sciences, may become candidates for the degree of Bachelor of Science in Medicine.

## Graduate Work

Graduate work of two types is offered in the College of Medicine:

1. Advanced study and research may be pursued in one or more of the laboratory departments by students holding baccalaureate degrees from this institution or from some other university or college. Such work, leading to the master's or doctor's degree, is registered for in the Graduate College and is subject to its regulations. A student may, with the consent of the Graduate College and the Dean of the College of Medicine, divide his work between the two colleges providing the general rules as to total hours of registration are not violated.

2. Research accomplished under the direct supervision of the faculty by graduates of outstanding scholarship serving in the University of Nebraska College of Medicine may lead to the degree of Doctor of Medicine cum laude. The following conditions laid down by the faculty must be complied with. The candidate should apply at least one year before he expects to come up for such degree and the subject of his study as well as an outline of the proposed work must be approved by the faculty Committee on Graduate Study. Throughout the year the candidate's investigative work should be under the supervision of two advisers named by this committee, one of whom shall be a member of the laboratory faculty, the other the chief of staff of the hospital where the candidate serves his internship. The work must represent original clinical or experimental data embodied in a typewritten thesis which should also give a

comprehensive and critical survey of the literature of the special topic under investigation. Three copies of the thesis should be submitted, one of which will be deposited in the Medical College Library, if accepted. The granting of the degree should be by unanimous vote of the faculty after the thesis, properly recommended by the advisory committee, has been accepted by the executive committee of the faculty.

### Fees and Expenses

All fees must be paid to the Finance Secretary at the time of registration. No person may enroll in or attend classes or take any examination until his fees are paid. Students are urged to retain all receipts issued by University officials. The following schedule of fees will remain in force for the year 1942-43 unless changed by the Board of Regents prior to registration.

The tuition fees for the premedical years vary from \$2.50 to \$3 per credit hour.

<b>Matriculation</b>	
Payable on entering a college.....	\$ 5.00
Being statutory, this fee cannot be refunded except when collected in error.	
<b>Nonresident</b>	
Minimum, each semester (see page 15).....	\$ 25.00
<b>Registration</b>	
Registration .....	\$ 1.00
This fee is charged every student each and every time he registers in the University.	
Reregistration or any change in registration .....	1.00
Late registration (fees paid after designated days) minimum.....	3.00
For each additional week after classes have begun.....	1.00
<b>Tuition</b>	
Tuition, <sup>1</sup> each semester.....	\$125.00
Irregular students, per credit hour.....	7.00
A breakage fee of \$10 per year is charged, the unused portion of which will be returned at the end of the year.	
For elective courses requiring laboratory space, apparatus, and material, an extra fee is charged. This fee is by agreement between the student and the chairman of the department, and is based on the amount of material required. No student in the College of Medicine may be excused from tuition payments because of the fact that he holds an appointive position or is doing instructional work for any department. Special course fees or the fees of students taking part-time work is prorated on the basis of the number of hours of work. In no case is the fee more than 20 cents for each hour of work. The minimum fee, however, is \$10. Breakage in the laboratory and damage to the College property is charged to the individual or class responsible. In case the responsibility for the damage cannot be placed it is charged to the class pro rata.	
<b>Incidental</b>	
Medical Service, each semester.....	2.00
Transcript (one copy furnished free)	
Each additional original copy.....	1.00
Each additional original and one carbon.....	1.25
<b>Special Examination</b>	
Each subject, Medical College.....	\$ 5.00
Advanced standing by examination, per credit hour.....	1.00
<b>Graduation</b>	
Baccalaureate degree .....	\$ 5.00
In absentia or medical cum laude, additional .....	10.00

<sup>1</sup> For students who entered before September 1, 1939, the fee will remain \$100 each semester, provided they have continuity of attendance.

No person may be recommended for a degree until he has paid all fees, including the fee for graduation.

**Nonresident Students.**—All students not residents of Nebraska must pay a nonresident fee, the fee charged being not less "than the fee charged to residents of Nebraska for a similar course of study in a corresponding institution by the state in which such a nonresident has his home." This fee will not be less than \$25 a semester. The exact amount will be determined when application for entrance to the University is made to the Registrar.

The following rules have been adopted by the Board of Regents:

1. In accordance with statutory provisions, all students not domiciled in Nebraska are required to pay the nonresident fees. Those entering the state to attend a state school, or within one year prior to matriculation, are presumed to be nonresidents and the burden of overcoming this statutory presumption is upon them. Ordinarily this will not be satisfied by a mere declaration, while attending school, of intent to reside in Nebraska.

2. One desiring exemption shall make a verified application therefor upon a blank to be secured from the Finance Secretary's office and approved by the committee on exemptions. All information called for by the form shall be given in full. When duly verified, the application shall be filed with the Finance Secretary.

3. Students who are charged the nonresident fee, and who claim exemption, must file their application for exemption with the Finance Secretary on or before the end of the ninth week of the semester for which the fee is charged; in the case of summer sessions, before the end of the third week of the term for which the fee is charged. For failure after due notice to file such application on said date, the fee becomes automatically assessed to the student.

4. In all cases the burden is upon the applicant to make a showing sufficient to justify the requested exemption. While personal hearings will not be granted as of right, the committee will summon the applicant for a personal interview in all cases where it is of the opinion that such an interview will aid the proper disposition of the case.

It should be noted that no provision is made for exempting students from this fee on account of financial need or of scholarship. Students coming from outside the state therefore should be prepared to pay the fee throughout their University career.

**Refunds.**—The matriculation fee will be refunded only when charged through an error of a University official. Registration and medical service fees will not be refunded but tuition and nonresident fees may be refunded on withdrawal in good standing from the University as follows:

TUITION RETURNABLE .....	ALL	75%	50%	25%	NONE
Each semester, withdrawal within .....	1-2	3-6	7-10	11-14	15-18 weeks

**Microscopes.**—Students are required to provide suitable microscopes for their own use. Inquiries regarding specifications for microscopes as recommended by the faculty may be obtained by addressing the dean's office.

**Expenses.**—Board may be obtained in the vicinity of the College campus at an average of \$6 per week. Comfortable rooms for individuals cost from \$10 to \$15 a month. Students rooming together may obtain comfortable rooming quarters at approximately \$8 per month each. The average ex-

pense of the student for a school year, including books, instruments, and all fees, is between \$700 and \$900. Students should provide an allowance of \$75 a year for books and instruments.

**Employment.**—The Young Men's Christian Association offers to students in the College of Medicine special season tickets at a very small cost, granting the privileges of the Association Building. In a city the size of Omaha there are many opportunities for students to defray a part of their expenses. The College of Medicine does not, however, guarantee employment. Through the Young Men's Christian Association and other agencies, employment is obtained for a number of students.

### Student Health Service

The Student Health Service, which is a part of the Department of Public Health, has as its function the protection and conservation of the health of the medical and nursing students. Periodic physical examinations are carried out and immunizations of proved worth are offered. Tuberculosis case-finding surveys are also conducted. Laboratory, x-ray, and hospital facilities are available to those who need them. Ill students may report here for examination and treatment in collaboration with the clinical staff. A student health council of senior medical students is maintained to give the students an opportunity to participate in this service and to make the contact between it and the students very close.

### Laboratory Facilities

**Anatomy.**—The Department of Anatomy occupies the third and fourth floors of the North Laboratory Building. The rooms are well lighted and ventilated. The "unit room" system—each unit accommodating four or eight students—has been adopted as superior to that of a large common dissecting room. The state anatomical law provides ample material for dissection. In the laboratory for microscopic anatomy individual desks, lockers, reagents, etc., are at the student's command, as are also excellent collections of histological and embryological material, models, charts, etc.

**Biochemistry.**—This department, located on the fourth floor of the South Laboratory Building, is amply equipped with modern scientific apparatus. It also has special research laboratories equipped with calorimeter, thermostat, automatic burettes, electric stoves, etc. A balance room and rooms for combustion, calorimetric, and Kjeldahl work are among the excellent facilities of this building.

**Clinical Pathology.**—There are two laboratories on each floor of the hospital adjoining the wards which are equipped for all regular diagnostic laboratory tests. For clinical clerk service a central hospital laboratory is provided, in which clinical laboratory work on assigned cases is done under supervision. For tissue examination, a special laboratory is located on the ground floor of the first hospital unit, with necropsy room adjacent.

**Maternal and Child Health.**—The Departments of Obstetrics and Pediatrics, in cooperation with the Bureau of Maternal and Child Health of the State Department of Health, maintain a special laboratory for the detailed investigation of clinical problems. This laboratory is located on the fourth floor of the hospital building and is equipped for the special biological and chemical tests necessary for the study of patients. This laboratory also carries on a limited amount of clinical investigation under the direction of the sponsoring departments. It serves both a teaching and research function.

**Pharmacology.**—Experimental pharmacology occupies the second floor of the South Laboratory Building. The chemical and pharmaceutical work of the student is carried on in this laboratory. The department's equipment includes private laboratories for experimental work.

**Pathology and Bacteriology.**—This department occupies the first and second floors of the North Laboratory Building, and has two large teaching laboratories for bacteriology, for general pathology of the second medical year, and for clinical and special pathology of the third medical year. Ample facilities and apparatus, with the exception of microscopes, are provided for each student.

**Physiology.**—The main physiology laboratory in the South Laboratory Building accommodates 40 students in each section and separate tables with lockers are provided for each pair of students. The room for mammalian experimentation accommodates 32 students. For research work and special experiments several additional rooms are available. The work shop, the instrument room, and the photographic room furnish opportunities for additional types of work.

### Clinical Facilities

**University Hospital.**—The University Hospital forms the largest unit of the group of buildings constituting the College of Medicine. It is the center around which all the activities of the various departments are grouped, making possible a close correlation between clinical and laboratory teaching. The hospital, modern in every respect, contains floor space for 240 beds, and provides for the care of a wide variety of cases.

Patients are received from the several counties of Nebraska and are admitted on the application of a legally qualified practitioner of medicine and county official. The patient's application certifies that he is financially unable to employ a physician. There are no private patients.

The ground floor contains an admitting department, drug room, kitchen, large and subsidiary dining rooms, pathological laboratories, necropsy amphitheater, the x-ray and physical therapy department, together with photography, and the stack room of the library. The first or main floor contains the college and hospital administration offices, finance office, medical amphitheater, reading room of the library, office of the dietitian, three medical wards, staff room, and electro cardiograph room. The second floor provides four surgical wards similar to those on medicine, a faculty conference room, the offices of the School of Nursing, and the Department of Hospital Records. The third floor contains wards for obstetrics and gynecology, a nursery, a children's ward, and a ward for neuro-psychiatry as well as the operating pavilion for obstetrics. On the fourth floor is situated the operating pavilion with rooms for general surgery and the surgical specialties which will accommodate large and small groups of observers, the hospital laboratory, the laboratory for clinical clerks, and interns' quarters. Each ward is provided with a large solarium.

The control of the University Hospital rests in the Board of Regents and is administered by the College of Medicine.

**University Dispensary.**—The dispensary is located in the South Laboratory Building. Separate services, each having its own rooms and equipment, are provided in internal medicine; surgery; eye, ear, nose, and throat; pediatrics; gynecology; obstetrics; neurology; dermatology; and genito-urinary diseases. There is also an out-call service which pro-



vides medical treatment in the homes, and in its problems cooperates with the Visiting Nurses' Association and other charitable agencies of the city. These activities are organized for the teaching of the senior students and furnish a wide diversity of diseases for observation and care by them during the last year.

**Extramural Hospitals.**—Clarkson, Douglas County, Lutheran, Immanuel, Methodist, and City Emergency hospitals are available for regular or special clinics as needed. Members of the University faculty are on the staffs of all these hospitals.

**Hospital Appointments.**—Graduates of the College of Medicine are afforded a wide choice in the selection of internships. Approximately 30 internships are available in the Omaha hospitals.

### Library and Museum Facilities

**College of Medicine Library.**—The college library is located in a wing of the Hospital Building and within easy access from the various laboratories, and stands as a vital, common interest to the laboratory and clinical branches of medical instruction. The spacious reading and seminar rooms furnish a most congenial place for students and faculty to work. Accessions, cataloging, and indexing are in charge of a competent, expert librarian. The 45,000 bound volumes and 21,000 unbound pamphlets, reprints, and theses are the result of purchases and acquisitions extending over more than half a century and represent the mature judgment, as to valuable medical literature, of many specialists. There has thus been built up, not only a very valuable research library, but one which offers students abundant opportunities for additional reading and study. More than 400 standard scientific periodicals are on the regular subscription list.

Incidental to its ordinary functions, the library has in recent years laid emphasis on the acquisition of material of historic interest, including pictures of great medical men, biographies, histories, and surgical instruments. It also keeps a file of reprints from the writings of Nebraska medical authors. Incorporated within the library of the College of Medicine are 2,000 volumes of the Omaha-Douglas County Medical Society, periodicals of the Nebraska State Medical Society, and private medical libraries of former practitioners of the state.

**University Library.**—In Lincoln, the University Library, containing 375,000 volumes is freely accessible to students and faculty in Omaha. Books may be withdrawn at any time upon demand. Likewise through the Medical College librarian it is possible for short periods to draw upon the resources of the John Crerar Library of Chicago or the Surgeon General's Library at Washington. The State Library of 110,000 volumes at the State Capitol and the Nebraska State Historical Society Library of 25,000 volumes include valuable medical works in certain lines; series of public documents such as reports of state boards of health and of state hospitals and other institutions.

**Museum.**—The pathological museum of the College of Medicine contains about 5,000 specimens. Nearly every variety of pathological lesion is represented and the constant addition of fresh material from the large number of autopsies performed continually adds to its interest. In addition to the gross specimens are thousands of microscopic sections and a large collection of wax reproductions of various lesions. A man tech-

nically trained in museum preparation is in charge of this museum. The museum is an important and necessary adjunct to the teaching of pathology and of clinical medicine.

The anatomical museum consisting of models, charts, and mounted specimens is housed in the quarters of the department of anatomy, where it is readily accessible to the students of the department.

### Scholarships and Loan Funds

**Scholarships and Fellowships.**—Scholarships are awarded in the various departments in return for student assistance. Applications should be made to the chairmen of departments.

Fellowships are available to students who qualify for graduate study and research in the medical sciences. Application should be made to the chairmen of departments.

**Jetur Riggs Conkling and Jennie Hanscom Conkling Foundation.**—The will of the late Clementine C. Conkling provides for the creation of a trust to be known as the "Jetur Riggs Conkling and Jennie Hanscom Conkling Foundation," the income of which shall be used by the Regents of the University of Nebraska in providing scholarship loans for deserving medical students. Scholarship loans may be awarded only after the close of the students' first year in the Medical College.

Under the stipulations of the trust, students who have completed the freshman medical year in good standing may apply for a scholarship loan. Scholarship loans will not exceed the sum of \$200 per year. Applications should be addressed to the dean.

**Omaha Medical College Foundation.**—This foundation, created in April 1921, was established largely through contributions received from former professors in the Omaha Medical College. The object of the foundation is to promote the study of medicine and to provide for medical research in the University of Nebraska College of Medicine and to assist worthy students by scholarships and loans. The total in this fund exceeds \$15,000. Only the income may be disbursed. Students applying for benefits under this fund should file a written application with the dean.

**Nebraska Federation of Women's Clubs Scholarship Loan.**—An annual grant of \$200 is made for a loan to a student in the College of Medicine, on the basis of scholarship and financial need.

### Student and Alumni Organizations

**Alumni Association.**—Alumni of the University of Nebraska College of Medicine maintain an active organization with headquarters in Omaha. The association numbers about 2000 members.

**Premedical Society.**—A large premedical society has existed for a number of years among the students in the premedical courses at Lincoln. This society meets monthly for an informal evening and to hear addresses by members of the faculty.

A Saturday in May is set aside each year as Premedic Day for a visit to the Omaha campus.

### Public Service

**Public Health.**—The College of Medicine stands ready to supply expert advice in cooperation with the state and local departments of health on the general health conditions within the state. Members of the faculty of the College of Medicine will respond whenever possible for addresses

on medical subjects of general interest. These addresses are available for teachers' associations, women's club meetings, and the like.

### Medical Curriculum

**Departmental Hours.**—The course of study outlined is constructed in accordance with the recommendations of the Council on Medical Education of the American Medical Association and of the Association of American Medical Colleges. The experience of the best medical colleges of the country has been freely utilized. The University Hospital and Dispensary on the Medical College campus furnish ideal opportunities for bedside clinical instruction in close relation to the scientific departments of the college.

DEPARTMENT	CLOCK HOURS
Anatomy .....	845
Biochemistry .....	238
Dermatology and Syphilology .....	71
Internal Medicine .....	746
Medical Jurisprudence.....	17
Neuro-Psychiatry .....	159
Obstetrics and Gynecology.....	271
Ophthalmology .....	49
Orthopedic Surgery.....	34
Otorhinolaryngology .....	47
Pathology and Bacteriology.....	709
Pediatrics .....	166
Physiology and Pharmacology .....	442
Radiology and Physical Therapy .....	34
Surgery .....	294
Urology .....	35
<b>TOTAL.....</b>	<b>4,157</b>

## Courses of Instruction

In the following departments, courses numbered 1a, b, c, etc., are given in the first medical year; courses numbered 2a, b, c, etc., in the second medical year; courses numbered 3a, b, c, etc., in the third medical year; courses numbered 4a, b, c, etc., in the fourth medical year. Courses numbered 300 carry graduate credit. Roman I indicates courses offered the first semester and II, the second semester.

### Anatomy

Professors Latta, Chairman, Poynter, Willard; Associate Professors Grodinsky, Hol-yoke; Assistant Professor R. R. Best; Instructor Garrett; Graduate Assistants.

In this department instruction is given in gross anatomy, histology, organology, embryology, and neurology. The work of the department extends through the first medical year.

All instruction is based on laboratory work carried out under the supervision of the staff. Lectures covering subjects of broad morphological significance are given before the entire class, but for the discussion of details, in conjunction with laboratory work, the class is subdivided into small groups. Every effort is made to correlate the work in gross and microscopic anatomy.

#### 1. Anatomy.—

✓(a) GROSS—Dissection of Upper Extremity.—Total 102 hours, second eight weeks. I.

(b) GROSS—Dissection of Head and Neck.—Total 120 hours. II.

(c) GROSS—Dissection of Torso.—Total 121 hours. II.

(d) GROSS—Dissection of Peritoneum and Lower Extremity.—Total 90 hours. II.

The above courses cover dissection of the entire body. This work is carried out in groups of four, each group being assigned a separate room. From time to time table demonstrations and quizzes are required. Through this table teaching the student's proficiency is increased and calibration of individual progress is made possible.

\* (e) EMBRYOLOGY-HISTOLOGY.—A brief survey of the fundamental facts of vertebrate development as based on chick, pig, and human embryos is first undertaken. This is followed by a study of the histogenesis of the fundamental tissues leading directly to their adult histological structure. Morphogenesis and histogenesis of the various organ systems of the body, excepting the nervous system which is studied independently, are similarly correlated with their adult histological and gross structure and with the relationships shown in gross anatomy. Special emphasis is placed on the study of the blood and blood-forming organs and the organs classified as endocrine which are studied somewhat independently. Total 208 hours. I.

(f) EMBRYOLOGY-HISTOLOGY.—Anatomy 1(e) continued. Total 90 hours, first eight weeks. II.

† (g) NEURO-ANATOMY.—The gross and microscopic anatomy of the nervous system including sense organs. Study is made of the human brain by means of gross dissection; gross and microscopic sections; gross and microscopic study of the eye, and other sense organs by specially prepared demonstrations. Text and lectures aim to integrate the details of laboratory study into functional systems applicable to later physiological and clinical studies. Lectures and laboratory. Total 114 hours. II.

#### Anatomy, Elective.—

300. RESEARCH.—Facilities are available for research on special problems within the field of the department, such work leading to graduate degrees under the rules of the Graduate College of the University.

301. SEMINAR.—Literature reviews and reports of progress of research in the special fields of investigation conducted by graduate students.

\* Formerly (e) and (f).

† Formerly (h).

## Biochemistry

Professor Morgulis, *Chairman*; Instructor Jacobi; Graduate Assistant

The aim of the instruction in biochemistry is to acquaint the student with the elementary facts of this science with special reference to their application to the problems of clinical medicine. Much stress is laid on training in the necessary technic and the laboratory work affords the students ample opportunity to learn the theory and practice of various biochemical methods.

To further supplement the elementary instruction advanced courses of study are offered to meet the needs of those who desire to extend their study and research in the application of the principles and methods of biochemistry to problems of both clinical and scientific medicine.

The courses given in the Department of Biochemistry presuppose preparation in inorganic, in organic, and in analytical chemistry, and are designed: (1) to give fundamental training in physiological chemistry as required in the regular curriculum of the medical student; (2) to afford students, not candidates for the degree of Doctor of Medicine, the means for obtaining the necessary credits for the degrees of Master of Arts and Doctor of Philosophy; (3) to extend the facilities of the laboratory for special work in selected topics to physicians and students independently of the requirements for a degree. All students who are candidates for a degree are expected to attend Course 2, unless the content of this course has been covered in an acceptable manner elsewhere.

### 2. Biological Chemistry.—

(a) PHYSICAL CHEMISTRY.—In this course various physiological and pathological problems are studied from the point of view of the principles of physical chemistry. Total 84 hours. First six weeks; 5 lectures and 9 hours laboratory per week. I.

(b) BIOLOGICAL CHEMISTRY.—Biochemistry 2a continued and covering: (a) descriptive biochemistry, dealing with the composition of biological materials; (b) dynamic biochemistry, dealing with the action of enzymes, metabolism, dietetics, urine secretion. Various methods for blood and urine analysis are taken up in the practical work of this course, and metabolism experiments carried out by the students constitute an important feature of the laboratory experience. Total 154 hours. Remaining 11 weeks; 5 lectures and 9 hours laboratory per week. I.

### Biological Chemistry, Elective.—

300. RESEARCH.—Subjects for investigation and hours to be arranged individually.

301. SEMINAR.—Literature reviews and reports of progress of research in the special fields of investigation conducted by graduate students.

## Dermatology and Syphilology

Professor Tomlinson, *Chairman*; Assistant Professors Cameron, D. J. Wilson

A thorough foundation in dermatology and syphilology is laid by lectures, quizzes, and demonstrations. At the University Dispensary the students are brought in personal contact with patients whom they observe throughout their entire care under the supervision of the attending physician. A large and carefully selected collection of plates and photographs is available for lantern use.

3a. Dermatology.—General classification of skin diseases, with lectures and quizzes on anatomy, histology, physiology, pathology, general symptomatology, etiology, diagnosis and treatment. 1 hour weekly. Total 17 hours. II.

### 4. Dermatology and Syphilology.—

(a) DISPENSARY CLINIC.—Lectures and clinics supplementary to Derm. 3, with emphasis placed on the diagnosis and treatment of the more common dermatoses. Demonstration of the various clinical manifestations of syphilis, with discussion of diagnosis and principles of treatment. 1 hour weekly. Total 34 hours. I, II.

(b) DISPENSARY.—Two weekly 2-hour clinics are held at the University Dispensary. Fourth-year students are assigned to these clinics for practical experience in the diagnosis of skin diseases and the treatment of syphilis. 4 hours weekly. Total 20 hours. I, II.

## Internal Medicine

Professors Bliss, *Chairman*, Allen, Conlin, Hall, Pratt, Skinner, *Emeritus*; Associate Professors F. L. Dunn, MacQuiddy, Moody, Moser, Niehaus, W. Thompson; Assistant Professors M. C. Andersen, Bean, Kirk, McCarthy, Mason, Rubnitz, C. Q. Thompson; Instructors Beber, G. N. Best, Brazer, Cloyd, Frandsen, Greene, Lewis, Margolin, Nickum, Prichard, Sharpe, Simmons, C. E. Thompson, Wright, Wyrens, G. A. Young Jr.

### 2. Internal Medicine.—

(a) **HISTORY OF MEDICINE.**—The outstanding characters and their contributions to medicine in relation to our present concepts of the practice of medicine as a whole. 17 hours. I.

(b) **HISTORY TAKING AND PHYSICAL EXAMINATION.**—Examination of the complete body by the use of the special senses and a minimum of apparatus. In the latter part of the course clinical cases are studied. 1 hour lecture, 2 hours demonstration and practice in groups. Total 51 hours. II.

(c) **SYMPTOMATOLOGY.**—Lecture and quiz course. The essential principles of medicine, the physiology and clinical interpretation of some of the more common symptoms. Total 17 hours. II.

### 3. Internal Medicine.—

(a) **PHYSICAL DIAGNOSIS.**—Presentation of clinical cases from the standpoint of pure observation without the aid of laboratory procedures or mechanical test other than the stethoscope and the blood pressure apparatus with consideration given to the matter of constitutional characteristics of the patient. Total 34 hours. I.

(b) **FUNDAMENTALS OF MEDICINE.**—This course consists of a series of special lectures on important subjects of medicine, combined with small group quiz sections on textbook assignments. One lecture and two quizzes weekly. Total 102 hours. I, II.

(c) **CLINICAL CLERK.**—Assignment to clinical cases in the hospital for complete history, physical examination, laboratory tests, progress notes, and presentation at regular staff rounds and clinics. Two groups of 10 students each are assigned to the University Hospital and County Hospital for a period of 9 weeks, 7 hours weekly. Total 63 hours. I, II.

(d) **HOSPITAL AND DISPENSARY CLINIC.**—Presentation of selected cases to illustrate diagnosis and treatment with particular emphasis on tuberculosis and nutrition. 68 hours. I, II.

(e) **THERAPEUTICS.**—Emphasizing treatment in internal medicine with clinical demonstrations of the use of drugs and other therapeutic measures. 1 hour weekly. Total 17 hours. II.

### 4. Internal Medicine.—

(a) **DISPENSARY.**—Regular assignment to dispensary clinic, where senior students are given assignment and responsibility in the diagnosis and treatment of ambulant patients of the type seen in the office. 8 hours weekly. Total 96 hours. I, II.

(b) **OUT-CALL.**—Fourth-year students are assigned to answer calls requiring a visit to the homes, when the patients are unable to attend the dispensary. Daily supervision is maintained and home visits are made by the attending staff on all difficult or serious cases. 16 hours weekly. Total 128 hours. I, II.

(c) **HOSPITAL CLINIC.**—Presentation of selected cases from the hospital service. 2 hours weekly. Total 68 hours. I, II.

(d) **DIAGNOSTIC PROBLEMS.**—The medical, surgical and personality features of the more common disease entities are discussed in hospital cases, the aim being to instruct the student to consider the clinical case from a broader and more comprehensive aspect. 17 hours. I.

(e) **TROPICAL MEDICINE.**—Distribution, etiology, diagnosis, and treatment of such tropical diseases as are of practical importance to American physicians. The endemology and epidemiology of such diseases with the general and special sanitary measures adapted to the prevention, control, and suppression of the same. 1 hour weekly. Total 17 hours. II.

(f) **MEDICAL REVIEW.**—Review of medicine based upon current literature and systematic presentation of diseases. Reference reading assignments and abstracting of recent articles. 1 hour weekly. Total 17 hours. II.

(g) **THERAPEUTICS.**—Continuation of Inter.Med. 3e. 1 hour weekly. Total 17 hours. I.

(h) **HEALTH EXAMINATIONS.**—Health examinations and compensation medicine, in



which a study is made of forms pertaining to health used in various government agencies. 17 hours. I.

### Medical Jurisprudence

Instructors Thomas, Hascall, Spier

**4. Medical Jurisprudence.**—The course in medical jurisprudence has for its purpose the presentation of medico-legal relationships in order that the student may be familiar with that increasingly pertinent phase of professional life and practice. This course is a comprehensive survey of the medico-legal field and a detailed analysis and study of that science which applies the principles and practice of medicine to the elucidation and settlement of legal questions which arise in everyday professional practice as well as in courts of law.

Physicians' contracts, general medico-legal relations, identity and survivorship, medical legislation, expert testimony, privileged communications, malpractice, and the physician's status on quasi-judicial commissions and boards are some of the subjects discussed. Total 17 hours. I.

### Neuro-Psychiatry

Professor G. A. Young Sr., *Chairman*; Associate Professor Wigton; Assistant Professors A. E. Bennett, R. H. Young; Instructor Cash.

*The course in nervous and mental diseases which extends throughout the third and fourth medical years aims primarily at giving the student the ability to make a comprehensive neurologic or psychiatric examination of any patient. This is held to be of essential importance and implies a working knowledge of the anatomy and physiology of the nervous system and of the symptoms resulting from pathological conditions affecting the principal centers and tracts. Secondarily, through the rich clinical material of the University Hospital and of the psychiatric ward of both the University Hospital and the Douglas County Hospital, it gives ample opportunity for first-hand contact with cases illustrative of the chief types of organic and functional nervous diseases and of the psychoses.*

#### 2. Neuro-Psychiatry.—

(a) **PSYCHOBIOLOGY.**—Lectures on psychobiology, an introduction to psychiatry. 1 hour weekly. Total 17 hours. I.

#### 3. Neuro-Psychiatry.—

(b) **PSYCHIATRY.**—Lectures and clinical demonstrations covering the field of psychiatry. Total 17 hours. I.

(c) **NEUROLOGY.**—Lectures and quiz-lectures covering methods of case taking, etiology, pathology, symptomatology, and treatment of the organic and functional nervous diseases. Total 17 hours. II.

(d) **CLINICAL CLERK.**—Cases from the University Hospital and Douglas County Hospital neuro-psychiatric departments are assigned to third-year students for complete case study and presentation before clinics. 6 hours weekly. Total 24 hours. I, II.

#### 4. Neuro-Psychiatry.—

(a) **HOSPITAL CLINIC.**—In this clinic, cases of neurologic and psychiatric types are presented for the purpose of demonstrating the main forms of neurologic and psychiatric disorders and to allow a discussion of their treatment and their relations to the field of general medicine. 2 hours weekly. Total 68 hours. I, II.

(b) **DISPENSARY.**—Clinics are held at the dispensary to which fourth-year students are assigned for practical work in the diagnosis and treatment of ambulant patients. A special clinic is held on the subnormal child. 4 hours weekly. Total 16 hours. I, II.

### Obstetrics and Gynecology

Professors Sage, *Chairman*, Pollard, *Emeritus*, Taylor; Assistant Professors W. E. Brown, McGoogan, *Secretary*, Moon; Instructors Anderson, Collins, Findley, Hoffman, Morgan, Stastny, Stearns, Vroman; Clinical Assistants M. J. Clark, Redgwick.

*The instruction in obstetrics and gynecology consists largely of practical demonstrations in the University Hospital, the dispensary, and the out-call service. In these clinics the student is trained in clinical diagnosis and treatment. The University Hospital affords abundant opportunity for the assignment of obstetric cases to members of the third-year medical class under direction. The prenatal clinic at the*

dispensary provides an excellent opportunity for both third- and fourth-year students to learn the proper care of the expectant mother. After a didactic review of the principles of obstetrics, the junior student is assigned to serve as assistant to the intern or house officer in the care of a patient during labor. He is next assigned the responsibility of a patient in the home delivery suite. This unit serves to familiarize the student with home conditions yet does not divorce him from the ready consultation and assistance of the hospital staff. During the fourth year the medical students carry on the out-call home delivery service under direct supervision of a member of the obstetric staff. Complete written reports of all cases attended are required and each student must have a record of 12 cases of confinement before graduation.

## 2. Obstetrics and Gynecology.—

(a) **PHYSIOLOGY OF PREGNANCY.**—Anatomy and physiology of the female genital organs in their relation to normal pregnancy, labor, and the puerperium. Physiology and care of the newborn child. 2 hours weekly. Total 34 hours. II.

## 3. Obstetrics and Gynecology.—

✓(b) **PATHOLOGY OF PREGNANCY.**—Abnormalities and complications of pregnancy, labor, puerperium, and the newborn child. 2 hours weekly. Total 68 hours. I, II.

(c) **CLINICAL CLERK.**—A third-year student is assigned to each obstetric case entering the University Hospital and is required to follow the progress of labor, assist at delivery, and maintain a complete record until discharge from the hospital. Six such case records are required. As a correlation of maneuvers observed on actual cases in the delivery rooms, 2 hours weekly are used in practice on the manikin. 6 hours weekly. Total 24 hours. I, II.

✓(d) **GYNECOLOGY.**—Surgical conditions affecting pregnancy and the postpartum period. Lacerations, infections, relaxations, malposition, and tumors affecting the uterus. 1 hour weekly, lecture or clinic. Total 34 hours. I, II.

## 4. Obstetrics and Gynecology.—

(a) **DISPENSARY.**—Fourth-year students are assigned to the dispensary prenatal clinic and the gynecology clinic, where they assist in prenatal care and gynecologic examination and treatment. 10 hours weekly. Total 36 hours. I, II.

(b) **OUT-CALL DELIVERIES.**—Two fourth-year students are assigned to each home delivery. Their work is carefully supervised by a member of the staff, and they are assisted in the home by a competent nurse. Each case is carefully followed during the postnatal period and a final report submitted. Six deliveries are required of each student. Approximate total time 24 hours.

✓(c) **HOSPITAL CLINIC.**—This course covers pathological conditions arising from or related to the puerperium. Total 34 hours. I, II.

✓(d) **PRACTICAL GYNECOLOGY.**—A complete concise course in practical gynecology for general practice which covers a discussion of the more commonly found conditions and stresses different forms of treatment and the relative merits of each. 17 hours. II.

## Ophthalmology

Professor W. H. Stokes, *Chairman*; Associate Professor Judd; Assistant Professors Gifford, Rasgorshek; Instructors Morrison, Steinberg.

### 3. Ophthalmology.—

(a) **MEDICAL OPHTHALMOLOGY.**—The didactic course consists of demonstrations and lectures on diseases of the eye, including ocular changes in general diseases. The lectures are illustrated by cases, diagrams, charts and slides. The course is supplemented by textbook work and quizzes. 1 hour weekly. Total 17 hours. II.

(b) **CLINICAL CLERK.**

### 4. Ophthalmology.—

(a) **DISPENSARY.**—Students are regularly assigned to the dispensary clinic for practical experience in the diagnosis and treatment of eye conditions. This course includes a drill in the principal uses of the ophthalmoscope and other instruments employed in the diagnosis of diseases of the eye. 8 hours weekly. Total 32 hours. I, II.

## Orthopedic Surgery

Professor Schrock, *Chairman*; Assistant Professor Johnson; Instructors Hamsa, C. H. Waters Jr.; Clinical Assistant Tipton.

**3. Orthopedic Surgery.**—

(a) LECTURE CLINIC.—Disease of bones and joints, synovial membranes and bursae. Congenital, acquired, and disease-producing deformities. Prevention of deformities and dystrophies with principles of treatment. Illustrated by photographs, slides, etc. 1 hour weekly. Total 17 hours. II.

(b) CLINICAL CLERK.—Students are assigned to hospital cases for complete history, physical examinations, and progress notes. Total 9 hours. I, II.

**4. Orthopedic Surgery.**—

(a) DISPENSARY.—Two weekly 2-hour clinics are held at the dispensary, to which fourth-year students are assigned for practical work in the diagnosis and treatment of orthopedic cases. 4 hours weekly. Total 8 hours. I, II.

**Orthopedic Surgery, Electives.**—

300. RESEARCH.—Work for specially qualified students on problems in special fields of investigation.

301. SEMINAR.—Literature reviews and reports of progress of research in special fields of investigation.

**Otorhinolaryngology**

Professors W. P. Wherry, *Chairman*, Callfas, *Emeritus*, Potts, *Emeritus*; Associate Professor Rubendall; Assistant Professors Cassidy, J. C. Davis, Haney; Instructors Romonek, H. B. Stokes; Assistant Instructor W. J. Wherry; Clinical Assistant Heine.

**3. Otorhinolaryngology.**—

(a) DISEASES OF EAR, NOSE, THROAT, AND LARYNX.—Use of head mirror taught in normal conditions. Student familiarized with different appearances of ear drums and conditions underlying them. Common diseases of ear and mastoid. Principles of functional examination of ear. Physiology, general principles of pathology, diagnosis, and treatment of the more frequent diseases of the nose, throat, and larynx. 1 hour weekly. Total 17 hours. II.

(b) CLINICAL CLERK.—Third-year students are assigned to University Hospital cases for complete history, physical examinations, and progress notes. Total 6 hours. I, II.

**4. Otorhinolaryngology.**—

(a) DISPENSARY.—Clinics are held twice weekly at the University Dispensary. Fourth-year students are regularly assigned for practical work in the diagnosis and treatment of ear, nose, and throat diseases. Conferences are held regularly during these hours. 6 hours weekly. Total 24 hours. I, II.

**Pathology and Bacteriology**

Professors Eggers, *Chairman*, Tollman; Associate Professors Gunderson, Weinberg; Assistant Professor LeMar; Instructors Baker, Slack; Resident Kraybill; Graduate Assistants.

*It is the aim of this department to acquaint the student with the material changes which cause, or are caused, by disease, including, in bacteriology, a study of the character and host relationships of disease-causing microorganisms, and, in clinical pathology, a study of laboratory methods as related to diagnosis.*

**1. Bacteriology.**—

(a) MEDICAL BACTERIOLOGY.—Lecture and laboratory course on the cultural characteristics, pathogenic properties, etc., of bacteria in general, with special reference to those of importance in disease. Total 184 hours. I.

**2. Pathology.**—

(a) GENERAL PATHOLOGY.—Lecture and laboratory course on the study of general disease processes. It comprises a study of the general principles of pathology; a study of disease processes in detail, in classroom and laboratory. 119 hours laboratory, 85 hours class work. Total 204 hours. II.

**CLINICAL PATHOLOGY**

*The aim of these courses is to emphasize the application of pathological principles to the study of clinical patients. This is accomplished through lectures which emphasize correlation of pathology and symptomatology, and by the teaching of laboratory methods which are in general use in the study of patients. Detailed discussion of*

the cases assigned in the clinical clerk services gives particularized application for the individual students. Experience in laboratory procedures is continued by dispensary assignments in the senior year amounting to about 30 hours.

### 3. Clinical Pathology.—

(b) CLINICAL PATHOLOGY.—Systemic disease, with emphasis on correlation of pathology and symptoms. Case history method is used, with presentation of gross and microscopic pathology. 9 hours weekly. 51 hours lecture, 102 hours laboratory. Total 153 hours. I.

(c) HOSPITAL LABORATORY.—Regular assignment on clinical clerk service for practical work in laboratory diagnostic tests under supervision. 8 hours weekly. Total 32 hours. I, II.

### 4. Pathology.—

(a) NECROPSIES.—Fourth-year students are assigned to necropsies in succession for detailed study and analysis, with presentation to the class in which interpretation of symptoms and findings and a review of pertinent literature is emphasized. Total 68 hours. I, II.

## PUBLIC HEALTH

*Instruction in public health is given to third and fourth-year students. These courses aim at giving the students a sound understanding of the principles of disease prevention and health maintenance and of giving them practical experience in the dispensary and in the field. Special emphasis is laid on the growing responsibilities of the physician in this toward his patients and the public at large.*

### 3. Public Health.—

(a) HYGIENE.—The relationship between water, food, air, soil, waste disposal, etc., and the development of disease in both urban and rural conditions. Reports of inspection of industrial and public service plants and methods. Total 34 hours. II.

### 4. Public Health.—

(b) PUBLIC HEALTH ADMINISTRATION.—Medical practice in relation to public health agencies, social histories, environment and disease, special methods of preventive medicine, as quarantine, immunization, and disinfection. 2 hours weekly. Total 34 hours. I.

### Pathology and Bacteriology, Electives.—

300. RESEARCH.—Work for specially qualified students, either in advanced laboratory procedure or in special problems.

301. SEMINAR.—Literature reviews and reports of progress of research in the special fields of investigation conducted by graduate students.

## Pediatrics

Professors Henske, *Chairman*, Moore; Associate Professor Jahr, *Secretary*; Assistant Professors Gedgoud, Robertson; Instructors C. F. Bantin, E. W. Bantin, G. L. Clark, Hancock, Klok, Morrow, Tompkins.

### 2. Pediatrics.—

(a) GROWTH AND DEVELOPMENT.—Diseases of newborn. Lectures and clinic. 1 hour weekly. Total 17 hours. II.

### 3. Pediatrics.—

(b) INFANT NUTRITION.—Infant feeding, deficiency diseases, disorders of metabolism. 2 hours weekly. Total 34 hours. I.

(c) COMMUNICABLE DISEASES.—Lectures and clinics when cases are available. 1 hour weekly. Total 17 hours. II.

(d) CLINICAL CLERK.—Students are assigned to University Hospital cases for complete history, physical and laboratory examinations, with requirement of progress notes and presentation at staff rounds and clinics. 6 hours weekly. Total 24 hours. I, II.

### 4. Pediatrics.—

(a) GENERAL PEDIATRICS.—Clinics and lectures on all aspects of pediatrics, utilizing clinical material within the hospital and out-patient departments. Behavior problems. 1 hour weekly. Total 34 hours. I, II.

(b) **DISPENSARY AND OUT-CALL.**—Four weekly 2-hour clinics are held at the dispensary to which fourth-year students are assigned for practical work in the diagnosis and treatment of ambulant cases. All children enter the dispensary through the pediatric clinics. Special clinics utilizing postnatal cases, tuberculosis cases, and rheumatic heart cases are held each week. Home visits to pediatric patients unable to attend dispensary. Supervision by staff members. 10 hours weekly. Total 40 hours. I, II.

## Physiology and Pharmacology

Professors McIntyre, *Chairman*, A. L. Bennett; Assistant Professor Dunn; Graduate Assistants.

*The general courses in physiology and pharmacology stress the fundamental principles underlying living processes. The experimental evidence for present theories is examined and the application of these concepts to the study of abnormal physiology and to pharmacology is emphasized. Special instruction is provided in advanced physiology and pharmacology for students seeking higher degrees.*

### 2. Physiology and Pharmacology.—

(a) **PHYSIOLOGY GENERAL COURSE.**—Muscle and nerve, central nervous system, circulation, digestion, metabolism, and special senses. Lectures, demonstrations, and conferences. Total 85 hours. I.

(b) **PHYSIOLOGY LABORATORY COURSE.**—Practical course in conjunction with Physiol. and Pharmacol. 2a. Total 136 hours. I.

(c) **PHYSIOLOGY AND PHARMACOLOGY GENERAL COURSE.**—Physiology of the kidney; physiology of the autonomic nervous system; physiology of the action of drugs; endocrinology; the vitamins; and prescription writing. Lectures, demonstrations, and conferences. Total 85 hours. II.

(d) **PHYSIOLOGY AND PHARMACOLOGY LABORATORY COURSE.**—Practical course in conjunction with Physiol. and Pharmacol. 2c. Total 136 hours. II.

### Physiology and Pharmacology, Electives.—

300. **RESEARCH.**—By arrangement with the chairman, Associate Professor Bennett, and Assistant Professor Dunn.

301. **SEMINAR.**—Literature reviews and reports of progress of research in the special fields of investigation conducted by graduate students and research workers and fellows.

## Radiology and Physical Therapy

Professor Hunt, *Chairman*; Instructor McAvin; Resident Neely; Nurse Neff.

*The principles of radiology and physical therapy are presented during the second semester of the second medical year and first semester of third medical year by means of lectures, demonstrations, and conferences. The application and clinical correlation of roentgenologic studies are presented during the third medical year in connection with the clinical clerkship. A weekly tumor clinic is conducted in the department by the tumor study group which provides correlation of clinical manifestations, histopathology, and treatment in the case of individual tumor cases assigned to students in the clinical clerk service.*

### 2. Radiology and Physical Therapy.—

(a) **PRINCIPLES OF ROENTGENOLOGICAL DIAGNOSIS.**—1 hour weekly. Total 17 hours. II.

### 3. Radiology and Physical Therapy.—

(b) **PRINCIPLES OF RADIOTHERAPY AND PHYSICAL THERAPY.**—1 hour weekly. Total 17 hours. I.

### 4. Radiology and Physical Therapy, Electives.—

300. **RESEARCH.**—Facilities are available for research in radiobiology and clinical radiology.

301. **SEMINAR.**—Literature reviews and reports of progress of research in the special fields of investigation.

## Surgery

Professors Keegan, *Chairman*, A. J. Brown, Nilsson, Shearer, C. H. Waters Sr.; Associate Professors R. R. Best, H. H. Davis, Grodinsky, Rich, Weinberg; Assistant Professors Bisgard, Johnson, McLaughlin; Instructors Hanisch, Jonas, McAvin, Murray, Quigley.

*The courses in surgery aim to give the student a thorough understanding of the principles of surgical pathology, surgical diagnosis, surgical indications and treatment, and do not attempt, in the undergraduate courses, instruction in major surgical operative technic. Minor surgical technic is taught in the clinical clerk service and dispensary, including numerous practical exercises in surgical asepsis. It is intended that the intern service prepare the student to perform such operations as would come to the practitioner as emergencies or in the course of general work. Preparation for the practice of general surgery requires additional postgraduate work as a resident or assistant in surgery.*

### ✓ 3. Surgery.—

(a) **FUNDAMENTALS OF SURGERY.**—A series of special lectures on important subjects of surgery, supplementary to the text. 2 hours weekly. Total 68 hours. I, II.

(b) **CLINICAL CLERK.**—Students are assigned to University Hospital cases for complete history, physical and laboratory examinations, with requirement of progress notes and presentation at staff rounds and clinics. 6 hours weekly. Total 24 hours. I, II.

✓ (c) **CLINICS.**—University Hospital. Presentation of selected cases to illustrate current lectures and textbook assignments. Practical experience in anesthesia and surgical asepsis. 1 hour weekly. Total 34 hours. I, II.

(d) **SURGICAL TECHNIC.**—Bandaging, dressings, drains, sutures, closure of wounds. Local anesthesia. Total 17 hours. II.

### 4. Surgery.—

✓ (a) **DISPENSARY.**—Regular assignment to dispensary clinics where students are given practical experience in the diagnosis and treatment of ambulant patients. 8 hours weekly. Total 32 hours. I, II.

✓ (b) **HOSPITAL AND DISPENSARY CLINIC.**—Presentation of selected cases to illustrate surgical diagnosis, operative indications, and postoperative care. Surgery of Trauma which includes lectures and clinical demonstrations of accidental and industrial injuries to various regions of the body, first aid, shock and regional treatment, medicolegal aspects. 2 hours weekly. Total 68 hours. I, II.

(c) **CLINICAL ANATOMY.**—Clinical aspects of regional and systemic anatomy by means of lantern slides and lectures. 1 hour weekly. Total 17 hours. I.

✓ (d) **FRACTURES AND DISLOCATIONS.**—Lecture, quiz, and demonstration course on fractures and dislocations. X-ray diagnosis with application of splints and casts. 1 hour weekly. Total 34 hours. I, II.

### Surgery, Electives.—

300. **RESEARCH.**—Work for specially qualified students on problems in special fields of investigation.

301. **SEMINAR.**—Literature reviews and reports of progress of research in special fields of investigation.

## Urology

Professor Edwin Davis, *Chairman*; Assistant Professor Owens; Instructors Adams, Martin; Clinical Assistant Distefano.

### 3. Urology.—

(a) **FUNDAMENTALS OF UROLOGY.**—Lectures and clinics on diseases of the urogenital system. 1 hour weekly. Total 17 hours. II.

(b) **CLINICAL CLERK.**—Students are assigned to University Hospital cases for complete case study. Total 6 hours. I, II.

### 4. Urology.—

(a) **DISPENSARY.**—Two clinics are held each week to which students are assigned for practical experience in the diagnosis and treatment of urogenital diseases. 4 hours weekly. Total 12 hours. I, II.



## Internship Appointments—1941 Seniors

Name	Home Address
Alder, Verne Hugo	Omaha
Anderl, Vernon Krueger, B.Sc. 1941	David City
Clarkson Hospital, Omaha	
Nix Hospital, San Antonio, Texas	
Anderson, Leo Eugene, A.B. 1932, York College; B.Sc. in Med. 1941	Council Bluffs, Ia.
Charles T. Miller Hospital, St. Paul, Minnesota	
Babbitt, Clifford Howard	Minature
U. S. Public Health Service, Norfolk, Virginia	
Bach, Stanley Monrad, A.B. 1937, Dana College	Blair
University of Nebraska College of Medicine Hospital, Omaha	
Bailey, Nicholas Edward, A.B. 1937, Univ. of California; B.Sc. in Med. 1940	Broken Bow
Orange County Hospital, Orange, California	
Barr, Carl Cecil, B.Sc. 1939	Tilden
Immanuel Hospital, Omaha	
Bartos, Paul Victor, B.Sc. in Med. 1940	Omaha
White Cross Hospital, Columbus, Ohio	
Biglin, Robert Francis, B.Sc. in Med. 1940	O'Neill
St. Louis City Hospital, St. Louis, Missouri	
Blizard, Eldon Charles	Aurora
Pierce County Hospital, Tacoma, Washington	
Brenneman, Jacob James, B.Sc. in Med. 1939	Omaha
St. Joseph's Hospital, Lancaster, Pennsylvania	
Brown, John Andrew III, B.Sc. 1939	Washington, Kans.
Shreveport Charity Hospital, Shreveport, Louisiana	
Chamberlain, Robert Ward, B.Sc. 1931, Grand Island College	Grand Island
St. Luke's Hospital, Denver, Colorado	
Chism, Carl Eugene, B.Sc. in Ed. 1936	Valparaiso
Akron City Hospital, Akron, Ohio	
Copsey, Harvey Gayle, B.Sc. 1941	Broken Bow
St. Joseph's Hospital, Kansas City, Missouri	
Crook, Guy Harman, A.B. 1937, Cornell University	Falls City
St. Joseph's Hospital, Kansas City, Missouri	
Drew, Roger Trafton, A.B. 1937, Nebraska Wesleyan University	Lincoln
Stamford Hospital, Stamford, Connecticut	
Eagle, Frank Lewis, B.Sc. in Med. 1938	Fremont
University of Nebraska College of Medicine Hospital, Omaha	
Embick, James Franklin	Laurel
St. Mary's Hospital, Madison, Wisconsin	
Finley, Robert Halbert, B.Sc. in Med. 1939	Omaha
U. S. Army, Letterman General Hospital, San Francisco	
Flebbe, Richard Arthur, B.Sc. in Med. 1940	North Platte
U. S. Public Health Service, Norfolk, Virginia	
Friesen, Harold F., B.Sc. in Med. 1939	Henderson
Immanuel Hospital, Omaha	
Goss, Frank Arthur, A.B. 1939; B.Sc. 1940	Omaha
Kansas City General Hospital, Kansas City, Missouri	
Gray, William, B.Sc. in Med. 1940	Omaha
Michael Reese Hospital, Chicago, Illinois	
Greenslit, Frank Stewart, A.B. 1934	Lincoln
University of Minnesota Hospital, Minneapolis, Minnesota	
Gridley, Lawrence James, B.Sc. in Med. 1939	Omaha
University of Nebraska College of Medicine Hospital, Omaha	
Hardt, George William	Hastings
Grasslands Hospital, Valhalla, New York	
Hasty, Robert Charles, B.Sc. 1939	Omaha
St. Luke's Hospital, Denver, Colorado	
Hill, Kathryn Dodds	Council Bluffs, Ia.
New York Infirmary for Women and Children, New York City	
Hirschmann, Jerome Herbert, B.Sc. in Med. 1941	Omaha
Cedars of Lebanon Hospital, Los Angeles, California	
Hollister, William Gray, A.B. 1937; B.Sc. 1940	Omaha
Grady Hospital, Atlanta, Georgia	
Holmes, Lee Chader, B.Sc. in Med. 1941	Hordville
St. John's Riverside Hospital, Yonkers, New York	

Name	Home Address
Kerr, Harold Harper, B.Sc. 1939	Akron, Ia.
Colorado General Hospital, Denver, Colorado	
Koutsky, Joseph John	Gretna
Methodist Hospital, Omaha	
Krieg, Jacob Thomas Jr.	Henry
University of Nebraska College of Medicine Hospital, Omaha	
Lierman, Clifford Earl, A.B. 1936	Curtis
Methodist Hospital, Omaha	
Lightbody, Kenneth A.	Crete
Harris Memorial Methodist Hospital, Ft. Worth, Texas	
McFee, John Lewis, B.Sc. 1939	Chappell
Pierce County Hospital, Tacoma, Washington	
McGinnis, Kenneth Tidyman, B.Sc. in Med. 1941	Ord
St. Louis City Hospital, St. Louis, Missouri	
Marsh, Charles Lafayette	Valley
Methodist Hospital, Omaha	
Matson, Guy Melvin, B.Sc. 1941	Omaha
Henry Ford Hospital, Detroit, Michigan	
Merselis, Harold Kenneth	North Bend
Detroit Receiving Hospital, Detroit, Michigan	
Morris, Robert Earl	Fremont
Bryan Memorial Hospital, Lincoln, Nebraska	
Nelson, Alvin Thomas, B.S. 1937, University of Wyoming	Laramie, Wyo.
Hurley Hospital, Flint, Michigan	
Novak, Joseph John	Howells
Santa Rosa Hospital, San Antonio, Texas	
Nutzman, William Edwin	Hastings
University of Nebraska College of Medicine Hospital, Omaha	
Peck, Willard Raymond, B.Sc. 1940	Omaha
University of Nebraska College of Medicine Hospital, Omaha	
Penry, Richard Earl, B.Sc. 1940	Belgrade
Immanuel Hospital, Omaha	
Perelman, Harry, B.Sc. in Med. 1939	Omaha
Jewish Hospital, St. Louis, Missouri	
Peterson, Paul Leland	Geneva
Presbyterian Hospital, Denver, Colorado	
Pilling, Matthew Ashton, B.Sc. in Ed. 1936, Kearney State Teachers College	Omaha
Akron City Hospital, Akron, Ohio	
Potter, Stanley Ernest, B.Sc. in Med. 1939	Omaha
Pennsylvania Hospital, Philadelphia, Pennsylvania	
Purvis, Donald Frederick	Fullerton
Detroit Receiving Hospital, Detroit, Michigan	
Redfern, William Earl, B.Sc. in Med. 1941	Marion
St. Luke's Hospital, Kansas City, Missouri	
Reiner, Walter M., B.Sc. in Med. 1940	Omaha
University of Nebraska College of Medicine Hospital, Omaha	
Reuben, Ronald, B.Sc. in Med. 1939	Omaha
Cedars of Lebanon Hospital, Los Angeles, California	
Scott, Nathaniel Charles	Omaha
Methodist Hospital, Omaha	
Senter, Vance Edward, B.Sc. 1939	Omaha
University of Nebraska College of Medicine Hospital, Omaha	
Shepard, Robert Deems, A.B. 1938	Nebraska City
St. Joseph's Hospital, Kansas City, Missouri	
Shirey, Paul Francis, B.Sc. 1939	Omaha
Providence Hospital, Seattle, Washington	
Staley, Sanford Orville, A.B. 1937, Nebraska Wesleyan University	Omaha
Tacoma General Hospital, Tacoma, Washington	
Stoll, Edward Manning, A.B. 1938; B.Sc. 1939	Lincoln
Eloise Hospital, Eloise, Michigan	
Stoltz, Charles Rodney, A.B. 1936, Nebraska Wesleyan University	Ord
University of Iowa Hospital, Iowa City, Iowa	
Stowe, Harold Robert	Council Bluffs, Ia.
Ancker Hospital, St. Paul, Minnesota	
Surber, Estel George, B.Sc. in Med. 1941	Norfolk
Kings County Hospital, Brooklyn, New York	
Swenson, Samuel August, A.B. and B.Sc. 1940	Wausa
Henry Ford Hospital, Detroit, Michigan	

<i>Name</i>	<i>Home Address</i>
Taylor, Willis Heacock, B.Sc. 1938	Omaha
Cleveland City Hospital, Cleveland, Ohio	
Venner, Robert Browning, A.B. 1933, Hastings College	Hastings
Lenox Hill Hospital, New York City, New York	
Voyles, Glenn Quintin, B.Sc. in Med. 1939	Omaha
University of Indiana Hospital, Indianapolis, Indiana	
Wagner, Carruth John, B.Sc. in Med. 1940	Omaha
U. S. Public Health Service, Seattle, Washington	
Wendland, John Prentice, B.Sc. 1939	Omaha
University of Nebraska College of Medicine Hospital, Omaha	
White, Charles Marvin	Sutherland
University of Kansas Hospital, Kansas City, Kansas	
Wiley, Clare Cottrell, B.Sc. 1940	Imperial
Long Island College Hospital, Brooklyn, New York	
Willson, Julius Langson, A.B. 1936; B.Sc. 1940	Omaha
Santa Barbara Cottage Hospital, Santa Barbara, California	
Wilson, John Maurice	Omaha
City Hospital, Columbus, Georgia	
Wilt, Burton Sinclair, B.Sc. in Med. 1940	Omaha
King County Hospital, Seattle, Washington	
Wright, Glenn Randolph	Omaha
Harris Memorial Methodist Hospital, Ft. Worth, Texas	

# Register of Students—1941-42

## IN OMAHA

### Fourth Medical Year

Adler, Ethel Irene.....	Omaha	Kuhlmann, Lawrence Bernard.....	Omaha
Altman, Richard Fortune.....	Omaha	Lammel, Harry George.....	Plymouth
Anderson, Gustave Theodore.....	North Platte	Link, Vance Eugene.....	Eustis
.....	North Platte	May, Ivan Albert.....	Crete
Ashby, Charles Ferg.....	Fairmont	Meier, Duane Alva.....	Lincoln
Baer, James.....	Omaha	Murdoch, James William.....	Lincoln
Bellamy, Donald Fordyce.....	Cambridge	Myrabo, Arnold Kenneth.....	Canton, S. D.
Bennett, Maxine.....	Cambridge	Nelson, John Cassius.....	Omaha
Bennett, Wilbur Keith.....	Omaha	Otto, Claude Wilbur.....	Aurora
Bolker, Norman.....	Omaha	Overmiller, Wilbur C.....	York
Bradshaw, Robert Bruce.....	Omaha	Paul, James Richard.....	Lincoln
Brendel, Richard Frederick.....	Murray	Paulson, Hubert Oscar.....	Lincoln
Bunting, Louis George.....	Belvidere	Penner, Donald Henry.....	Beatrice
Bushman, Louis Bernard Jr.....	Omaha	Peter, Frank John.....	Turlock, Calif.
Carr, Rex Nele.....	Lincoln	Place, George Edgar.....	Lincoln
Clark, Jean.....	Omaha	Proffitt, Jonas Alfred.....	Hastings
Conry, Erwin Leroy.....	Omaha	Prouty, Margaret Jo.....	Lincoln
Cowlshaw, Howard C.....	Kemmerer, Wyo.	Redfield, John Josiah.....	Omaha
Cullen, George.....	Lincoln	Rider, Harmon Elliott.....	Lincoln
Davidson, Thomas Hayes.....	Casper, Wyo.	Schilke, Elliott William.....	Daykin
Drown, Roger Ernest.....	Seward	Schufeldt, Dean Harold.....	Hyannis
Dyhrberg, Norman Edward.....	Cumberland Center, Me.	Scott, Paul Milton.....	Cozad
.....	Seward	Skokan, William.....	Verdigre
Garner, Fay Lorenzen.....	Arthur	Spar, Arthur Aaron.....	Omaha
Gessford, Howard Henderson.....	Lincoln	Sprague, Lavern Donahue.....	Omaha
Griess, Donald Ferdinand.....	Minden	Stanfield, Clyde Everett.....	Cheyenne, Wyo.
Hansen, Hodson Arthur.....	Omaha	Stappenbeck, Richard Fredrick.....	Brock
Hansen, Theodore Marcus.....	Omaha	Stuart, Robert Leo.....	Lexington
Harb, Fred Wilson.....	Omaha	Tatelman, Maurice.....	Omaha
Hawkins, Fred Bowen.....	Butte	Taylor, Edwin Lawrence.....	Omaha
Hildebrand, Carl Herbert Jr.....	Omaha	Thompson, Lynn Wirt.....	Omaha
Hildebrand, Howard Hadden.....	York	Tyner, George St. George Jr.....	Omaha
Hornberger, Evans Zack.....	Omaha	Van Ackeren, Eugene George.....	Cedar Rapids, Ia.
Imes, Loren Edwin.....	Cozad	Wagner, Jacob C.....	Minatare
Johnson, George Nick.....	Omaha	Willcockson, Thomas Harden.....	Hot Springs, S. D.
Johnson, Richard Moltzen.....	Santa Cruz, Calif.	.....	.....
Jones, Harold William.....	Ponca	.....	.....

### Third Medical Year

Adams, Burnell Howard.....	Nehawka	Freed, Charles Roger.....	Omaha
Ainlay, George William Jr.....	Omaha	Gilbert, Louis William.....	Beatrice
Anderson, James Burns.....	Lincoln	Gogela, Louis James.....	Omaha
Bach, Sven Aage.....	Blair	Goldner, Joseph Leonard.....	Omaha
Bell, Gordon Dale.....	Hastings	Haggar, David Kalil.....	Sioux Falls, S. D.
Bivens, William Samuel.....	Omaha	Hall, Robert Wade.....	Omaha
Brewster, Donald Eugene.....	Holdrege	Hamel, John Kenneth.....	Tecumseh
Brolsma, Marion Porter.....	Omaha	Harvey, Alexander Thom.....	Fremont
Brush, John Hobart.....	Norfolk	Horak, Oliver Adolph.....	Dodge
Byers, Robert Charles.....	Fremont	Hranac, Charles Eugene.....	Geneva
Carey, Blaine Peter.....	Nebraska City	Johnson, Myron Clinton.....	Valparaiso
Carroll, Richard William.....	Omaha	Jones, Robert Glenn.....	Scottsbluff
Cowgill, Donna Coleen.....	Clarks	Koefoot, Theodore Henry Jr.....	Broken Bow
Eastham, Gerald Martin.....	Ashland	Lake, Max Sanborn.....	Lincoln
Elliott, Thomas Spencer.....	Kearney	Lauridson, James.....	Callaway
Feehan, John Joseph Jr.....	Clarks	Lavender, Jack Gould.....	Omaha
Fenstermacher, Robert Clark.....	Sargent	Lawton, Richard Leroy.....	Omaha
Filley, Vernon Warner.....	Lincoln	Lehmer, Robert Allison.....	Omaha
Frank, Carl Laughlin.....	Omaha	Leonard, Patrick Robert.....	Anselmo
Frank, Muriel Naomi.....	Omaha	Lewis, Warren Chancellor.....	Lincoln

Lytton, George	Fairbury	Reimers, Arthur Francis	Big Springs
McCulloch, Charles Schindle	Omaha	Reimers, Wilbur Louis	Big Springs
McGee, Millard Blair	Omaha	Rice, Donald Thomas	Lincoln
McGirr, John Irwin	Beatrice	Robb, John Alton	Lincoln
McMillan, John Anderson	Hastings	Roeser, Edwin Heldt	Grand Island
Markle, John George	Ithaca	Rooch, Paul Carl	Utica
Mattson, Harold Andrew	Kearney	Smiley, Richard Hathaway	Lincoln
Moessner, Samuel Frederick	Lincoln	Smith, Edward Joseph	Omaha
Monovitz, Albert William	Omaha	Smith, Richard Dale	Omaha
Morris, William Elbert	Omaha	Squires, Robert Sigel	Wilcox
Mutz, Austin Edward	Lincoln	Synovec, Emil	Pierce
Nebe, Frederick Martin	Lincoln	Taylor, Bowen Eacritt	Omaha
Neil, Stanley Roy	Cozad	Thomas, Richard Louis	Hebron
Neville, William Evans	Fairbury	Weare, Clifford Simpson	Stamford
Panther, Edward George	Hebron	Wiley, Stuart Paul	Imperial
Paris, Sterling	Omaha	Williams, Norman Leslie	Oak Park, Ill.
Pederson, Earl Stanley	Omaha	Wisner, Harry Joseph Jr.	Scottsbluff
Peterson, Stanley S.	Omaha	Wurtz, Reginald Matt	Hartington

### Second Medical Year

Allely, James Wilson	Omaha	Miller, Lloyd Fred	Lincoln
Anderson, Harlan Burnell	Fullerton	Miller, Oscar Warren	Rushville
Anderson, Harvey Chris	Wolbach	Morris, Haskell	Omaha
Anderson, Milton Henry	Omaha	Murphy, Mary Lois	Lincoln
Artist, Elmer Jacob	Benkelman	Neligh, Gordon Leigh Jr.	Grand Island
Barton, Harry Clay Jr.	Gering	Newton, Walter Lourane	Hollinger
Beck, Joseph Delmar	West Point	Niehus, William Burritt	Valentine
Blank, William Albert	Franklin	Osterholm, Richard Stanley	Omaha
Breuer, Rosalie Eva	Lincoln	Penner, Elmer Louis	Beatrice
Brown, William Charles	Seattle, Wash.	Peters, Roy Marvin	Omaha
Burney, Dwight W. Jr.	Hartington	Petersen, Donald Martin	Hampton
Campbell, Stuart Douglas	Norfolk	Peterson, Harold Raymond	Red Cloud
Clemmons, Howard McGinnis	Omaha	Pillsbury, Robert Dudley	Lincoln
Dean, George William	Lincoln	Pollard, Marven John	Farnam
Dickinson, Robert Hugh	Omaha	Raines, Max McCoy	Weeping Water
Erman, Eugene Dobrin	Omaha	Rankin, Emmett Clair	York
Freed, John Howard	Omaha	Rasmussen, John Arthur	Scottsbluff
French, Ivan Merwyn	O'Neill	Reasoner, William Elmer	Omaha
Friesen, Arnold Raymond	Bradshaw	Rees, Harding	Omaha
Goss, Carrol Wilson	Brunswick	Ridenour, Raymond Hazen	Hastings
Greene, Dan Edward	Omaha	Sanders, Wilfred Nolan	Republican City
Griffith, Paul Condon	Omaha	Schulz, Donald Paul	Omaha
Haworth, John Embree	Aurora	Scofield, John Howard Jr.	Lincoln
Heiser, Erwin Nicholas	Lincoln	Segard, Edwin Curtis	Omaha
Hinrichs, William Alden	Aurora	Sheldon, Keith Walker	Omaha
Hoyt, Melvin Sumner	Whitman	Slaughter, Owen Leroy	Norfolk
Johnson, Cedric Cloys	Omaha	Smalldon, Ted R.	Omaha
Jorgensen, Orlin Harry	Lincoln	Steenburg, Edmund Arthur	Aurora
Kleager, Clyde Lewis	Lincoln	Steffens, LaVerne Christian	Omaha
Korisko, Donald Lewis	Omaha	Stickler, Harry Elmer	Omaha
Lane, Laurance Dean	Alma	Stone, Frank Paschal	North Platte
Leask, William Harrison	Fairbury	Teich, Kenneth William	Columbus
Lindell, Harry Nels	Sutherland	Therien, Robert Charles	Lincoln
Linn, Richard Harry	Lincoln	Vickery, Austin L. Jr.	Omaha
McFadden, Harry Webber	Lincoln	Wagner, William Franklin	Omaha
	Sioux Falls, S. D.	Wickman, Kathleen Ruth	Guide Rock
Maxwell, Paul	Lincoln	Wittstruck, Kenneth Paul	Lincoln
Merrick, Robert Bruce	Alliance	Woodruff, Bradley Burton	Grand Island
Meyer, Leslie Carl	Milford	Wyrens, Donald Edward	Scottsbluff

### First Medical Year

Adamson, John Anton	Butte	Beethe, Raymond Carl	Lincoln
Alevezos, George James	Omaha	Bell, Ned Emmons	York
Anderson, Thorwald Robert	North Platte	Bosley, Warren Guy	Palisade
Baker, Howard Roy	Omaha	Brakel, Frank James	Callaway
Barr, Robert Earl	Tilden	Browne, Kenneth Murle	Omaha
		Camp, Ray Jr.	Aurora

Cassel, Ralph Lowell.....	York	Meier, Woodrow Wilson.....	Oshkosh
Chappell, Elliott Rae.....	Mindon	Miller, Burdette Langdon.....	Lincoln
Chinburg, Kenneth George.....	Craig	Miller, Richard Kewenige.....	Lincoln
Christie, David Parker.....	Omaha	Newkirk, John Ross.....	Omaha
Coe, John Daniel.....	Hastings	Nilsson, Donald Charles.....	Omaha
Colglazier, Jack Lloyd.....	Falls City	Nisley, Robert James.....	North Platte
Condon, Robert John.....	Omaha	O'Connor, John William.....	Kearney
Conry, Robert Francis.....	Omaha	Olson, Leland J.....	Palmyra
Copoc, Loran Earl.....	Seward	Owen, Roger Donald.....	Omaha
Cotton, Walter Thomas.....	Omaha	Pester, George Henry.....	Anselmy
Cowger, Robert.....	Hastings	Peters, George Edward.....	Omaha
Cutshall, Vernon Hayes.....	Lincoln	Petersen, Norris Clifford.....	Omaha
Day, Merrill LaVerne.....	York	Pfeifer, LaVerne Frank.....	Lincoln
Delfs, Richard Carl.....	Shickley	Phelps, Elbert Taylor.....	Omaha
DeMay, George Hal.....	Shelton	Pitcaithley, Harry Weller.....	Lincoln
Ekart, Paul Ivan.....	Wymore	Placek, Louis Thomas.....	Columbus
Falloon, Edwin Lang.....	Falls City	Platt, Otis Boyes.....	North Platte
Filippi, John Quirino.....	Omaha	Pratt, Peyton Thomas.....	Omaha
George, John Harold.....	Omaha	Protzman, Frank Wilmoth.....	Lincoln
Getscher, Phillip Ellsworth.....	Omaha	Rees, Barney Benjamin.....	York
Gill, James Pfeiffer.....	Omaha	Root, Charles Morton.....	Omaha
Gillies, Ray O'Herin.....	Omaha	Roper, Charles Edwin.....	Edgemont, S. D.
Gostas, George Andrew.....	Lincoln	Rumbolz, William Leonard.....	Lincoln
Green, Norman Ellis.....	Norfolk	Schlichtemeier, Ellis Omer.....	Nehawka
Halley, Norman Bernard.....	Scottsbluff	Smith, Richard Draper.....	Lincoln
Harris, Walter Rolland.....	Sterling	Snyder, John Thomas.....	Nemaha
Jessen, Albert Vern.....	Central City	Snyder, Stuart Stanley.....	York
Johnson, Earle George.....	Grand Island	Spellman, Frank William.....	Omaha
Kelley, Don Thomas.....	Omaha	Stemper, Jack Michael.....	Lincoln
King, Fred Ervin.....	Lincoln	Townley, Frank Newcomer.....	Kenesaw
Knosp, Norman Clayton.....	Callaway	Truhlsen, Stanley Marshall.....	Herman
Kovarik, James Robert.....	Omaha	Turkel, Stanley.....	Omaha
Kuppinger, John Caniff.....	Omaha	Vincent, Jack Frederick.....	O'Neill
Lake, Robert Hayes.....	Omaha	Vrtiska, Frank Leonard.....	Pawnee City
Lancaster, Wallace Lynn.....	Albion	Wahl, John William.....	Omaha
Larson, Frank Clark.....	Peru	Walvoord, Carl Arthur.....	Firth
Larson, George Eugene.....	Lyman	Warner, George William.....	York
Larson, Paul Edward.....	Lyons	White, Donald Edward.....	Lincoln
Liston, Howard Edson.....	Elmwood	Wiedman, Jack Gunsaul.....	Lincoln
Lyman, Edwin Day.....	Lincoln	Wiggins, Edward Nathaniel.....	Omaha
McMurtrey, George Boone.....	Cody	Winter, Lewis Stuart.....	Western
McWhorter, Clarence Austin.....	Osmond	Worden, Ralph Edwin.....	Alliance
Mann, Arlene Marjorie.....	Lincoln	Young, Earnest James.....	Marsland
Mansour, James.....	Lincoln	Zikmund, Elno Thomas.....	Omaha
Marvel, Robert James.....	Hastings		

## IN LINCOLN

## Graduate Premedical Students

Fuenning, Samuel Isaiah.....	Lincoln	Rittenhouse, Leon Clare.....	Lewellen
------------------------------	---------	------------------------------	----------

## Senior Premedical Students

Alpers, Hilma Irene Smith.....	Lincoln	James, Lynn A.....	Fairbury
Barrett, Laurence Overton.....	Lincoln	Jurgensen, Clinton Christian.....	Julesburg, Colo.
Bastron, Adolph.....	Bayard	Ludwick, Robert Warring.....	Lincoln
Bryngelson, Jared Leigh.....	Pender	Malster, Clara.....	Aurora
Butterworth, Nelson St. Clair.....	Norfolk	Selzer, James Milton.....	Scottsbluff
Carothers, John Warren.....	Lincoln	Walter, Floyd John.....	Chambers
Dickson, Donald George.....	Lincoln	Wilson, Lyle Everett.....	Lincoln
Engdahl, Wallace Edward.....	Omaha		

## Junior Premedical Students

Arpke, Charles Kenneth.....	Beatrice	Beckwith, Richard R.....	Central City
Austin, Arthur Thomas.....	Newman Grove	Beshore, David Lloyd.....	Kearney
Baker, John Nolan.....	Lincoln	Boughn, Joseph Kent.....	Walthill
Baltensperger, Dwight Done.....	Bushnell	Bradrick, Harlan Page.....	Clarinda, Ia.
Barta, Lloyd Leslie.....	DeWitt	Brooks, Joseph Benson.....	Lincoln



Carter, Billy June .....	Chappell	Kline, Nat Dan .....	Madison
Chadek, Leonard James .....	Omaha	Lauby, Vincent William .....	Bridgeport
Christoffersen, Frank Dale .....		McQuillan, William Michael .....	Lincoln
	Deer Lodge, Mont.	Mahan, William Frederick .....	Bridgeport
Conlin, Dixon Frank .....	Omaha	Mauck, Nancy Alice .....	Omaha
Crouse, Murray H. ....	Osceola	Mease, Willis Eugene .....	Broken Bow
Deffer, Philip Augustus .....	Indianola	Mikkelsen, Ole William .....	
Deyke, LaVerne Frederick .....	Lincoln		Sioux Falls, S. D.
Dodd, Robert Bruce .....	Washington, D. C.	Monsour, Karem John .....	Lincoln
Douvas, Nicholas George .....	Hastings	Paine, Frederic Olney .....	Lincoln
Flothow, Max William .....	Omaha	Pazen, Arthur John .....	Kingston, Pa.
Foe, Adrian Alan .....	Red Cloud	Petersen, Gudmund Edward .....	Lincoln
Fouts, Marjorie Marilyn .....	Seward	Porter, Dale Orville .....	Nebraska City
Gauchat, August Charles .....	Brock	Raachs, Richard Fredric .....	Broken Bow
Graham, William Ernest .....	Lincoln	Redelfs, Jack Wright .....	Omaha
Griswold, Patricia Ellen .....	Lincoln	Rundquist, Russel Brian .....	Newman Grove
Hanisch, Edward Carl .....	St. Paul	Schneckloth, Roland Edmunds .....	Lincoln
Hansen, Karl Bruno .....	Tilden	Shaw, Susan Pratt .....	David City
Horner, George Marlin .....	Ainsworth	Shev, Elmer Edward .....	Lincoln
Hossle, LaVern Myrtle .....	Red Oak, Ia.	Splichal, Richard LeRoy .....	Valentine
Hurley, Dale Wayne .....	Merna	Weesner, James Edward .....	Red Cloud
Jackman, Herbert Saul .....	Omaha	Welch, John Stanley .....	Lincoln
Johnson, Don Robert .....	Bruning	Wilson, Richard Barr .....	Lincoln
Johnson, Marlin John Elof .....	Bristow	Witham, Ray Gardner .....	Chappell
Johnson, Walter Leland .....	Lincoln	Wood, Elbert Stanley Jr. ....	Cody
Jones, Aubrey Harris .....	Lincoln	Yoachim, William Peter Jr. ....	
Kantor, Phillip William .....	Sioux City, Ia.		Alberta, Canada
Keast, Robert William .....	Fremont	Zwiebel, Irvin Michael .....	Papillion

#### Sophomore Premedical Students

Alberts, Marion Edward .....	Hastings	McCarville, John Raymond .....	Omaha
Alfaro, Arsenio .....	Isabela, Puerto Rico	Malashock, Edward Marvin .....	Omaha
Arnot, Charles William .....	Humboldt	Meese, Lee David .....	Ithaca
Barrett, William Clare .....	Nebraska City	Mertz, Max Albert .....	Lincoln
Bell, James Dennis .....	York	Meyer, Milton William .....	Lincoln
Deines, Margaret Elizabeth .....	Lincoln	Moell, Lyman Dwight .....	Lincoln
Douglas, Robert Norton .....	Cozad	O'Connell, Frank Boyd Jr. ....	Lincoln
Dowell, William Fredrick .....	Lincoln	Peck, Charlotte Dephayne .....	Lincoln
Dunn, Walter Eugene .....	Benkelman	Petersen, Byron Douglas .....	Atkinson
Eastman, Nathan LeRoy .....	Kimball	Petersen, Deane Alfred .....	Avoca, Ia.
Fiebig, Emma .....	Loup City	Rodman, Hubert Harmer .....	Louisville
Geesaman, Richard Elliott .....	Fort Calhoun	Rose, Betty Alyce .....	Taylor
Hack, Flora Marion .....	Lincoln	Rossmiller, Lois Nadine .....	Deshler
Hubbard, Theodore Franklin .....	Columbus	Schabacker, Dorothea Elizabeth .....	
Jahn, Dorothy Elizabeth .....	Lincoln		Arapahoe
Jones, Richard Arthur .....	Bridgeport	Shannon, Virginia Louise .....	Falls City
Kohiro, Horace .....	Lincoln	Witt, Alys Marie .....	Syracuse
Larson, Sherwood Lee .....	Cheyenne, Wyo.	Zimmer, Clarence .....	Beaver Crossing
Lincoln, Arthur Fulton .....	North Platte		

#### Junior Division Premedical Students

Allen Mary Lorraine .....	Weeping Water	Chaloupka, Melville Louis .....	Omaha
Asher, John Calvin .....	Aurora	Chandler, Robert Michael .....	Pierre, S. D.
Bale, Samuel Arthur .....	Lincoln	Chun, Esmond Chiu Kong Honolulu, T.H.	Lincoln
Bartle, Edward Franklin .....	St. Paul	Cochran, Roy Edwin Jr. ....	Lincoln
Batt, Harold Vernon .....	Hastings	Collins, Frederick Gene .....	West Point
Beede, Margaret Lea .....	Lincoln	Counce, Donald A. ....	Hayes Center
Bennett, Bernard Howard .....	Omaha	Dailey, June Elizabeth .....	Hardy
Bently, Neil Benjamin .....	Norfolk	Davies, Robert Russell .....	Kimball
Berger, Mary Ellen .....	Seward	Dworsky, Barbara Joy .....	Lincoln
Bland, Robert Weidensall .....	Shelby	Ehrlich, Robert Wayne .....	Lincoln
Brickell, Irene Doyle .....	Fairbury	Farmer, Lee Roy .....	Alliance
Bridenbaugh, Lloyd Donald .....	Dakota City	Finkle, Joan Elizabeth .....	Lincoln
Brieler, Hugo Anthony .....	Lincoln	Flansberg, Robert Brooks .....	Detroit, Mich.
Briggs, Arch Lee .....	Lincoln	Frazier, Samuel Fred .....	Rosiclare, Ill.
Brugh, Elroy Alfred .....	York	Ginsberg, Eudice .....	Dakota City
Byers, Malcolm Sexton .....	Fremont	Hahn, Richard Julius .....	Lincoln
Cate, Rosettabel .....	Superior	Hanisch, Robert Wiese .....	St. Paul



Hansen, Howard Edward.....	Lincoln	Marsh, Frederick Ernest.....	Omaha
Harvey, Harold Elmer.....	Lincoln	Marshall, Mary Kay.....	Lincoln
Hawes, Charlotte Carol.....	Fairbury	Miller, Marilyn Ethel.....	Worland, Wyo.
Helms, Byron Everett.....	Cheyenne, Wyo.	Motzkus, Richard Warren.....	Leigh
Houfek, Edward Emil.....	Schuyler	Newman, Clarence Mitchell.....	Wallace
Huffman, William Brooks.....	Elgin	Norris, Barbara Mae.....	Avoca
Jirak, Gerald Joes.....	Ord	Nutzman, Jack Fred.....	Harvard
Johnston, Jean Frances.....	Grand Island	Olson, Robert Stanford.....	Omaha
Jones, Jacqueline Jean.....	Omaha	Patterson, Roberta Mae.....	York
Jourdan, Harold Daniel.....	Omaha	Perry, Sam Huntington.....	Cozad
Kalin, John Anthony.....	Lincoln	Pillsbury, Curtis Bryant.....	Lincoln
Kellow, Keith Vance.....	So. Sioux City	Powers, Walter H. Jr.....	Omaha
Kent, Donald Charles.....	Brainard	Reese, Donna Loy.....	Omaha
Kerstein, Randall Marvin.....	Wahoo	Rice, Rodney Ansen.....	Scottsbluff
Killian, Warren Russell.....	North Platte	Roberts, Roberta Jeanne.....	Sterling
Kimball, Curtis Dedrick.....	Lincoln	Rosenbaum, James Keith.....	Hebron
Koubek, Alvin James.....	Arnold	Rubnitz, Myron Ethan.....	Omaha
Koubek, Raymond Frank.....	Arnold	Schultz, Elvon Berlyn.....	Atkinson
Koutsky, Betty June.....	Lincoln	Schwartz, Melvin Mendel.....	Omaha
Kyle, Eugene Willis.....	Columbus	Shaheen, Charles Anthony.....	Lincoln
Lammers, Lorraine Eileen.....	North Platte	Sides, Leroy James.....	Gibbon
Lang, Jack LeRoy.....	Lincoln	Smith, Lloyd Stanford.....	Omaha
Lingenfelder, Eugene.....	Lincoln	Smith, Mary Frances.....	Falls City
Loeffel, Edwin John.....	Lincoln	Smith, Maxcy Jean.....	Bayard
Loomis, George Walter.....	Omaha	Snell, Georgia Bonita.....	Hastings
Lundberg, Loren Fredrick.....	Wausa	Soulek, Donna Jane.....	Niobrara
McIllice, Patricia E.....	Lawrence	Stuermer, Virginia Mae.....	Lincoln
McNeill, Roger Franklin.....	Lincoln	Theilen, Ernest Otto.....	Columbus
McShane, Robert Allyn.....	Louisville	Toy, Anton Jr.....	O'Neill
Malott, Ralph Justin Jr.....	Scottsbluff	Tully, Hugh Eugene.....	Schuyler
Malster, Louisa.....	Aurora	Webman, Joseph Burnell.....	Fremont
Margolin, Esar Gordon.....	Omaha	Westfall, Edwin Jay.....	Nebraska City

## TRAINING COURSE FOR X-RAY TECHNICIANS

HOWARD B. HUNT, M.A., M.D.

*Professor of Radiology and Physical Therapy*

**Organization.**—The course for x-ray technicians has been established by authority of The Board of Regents in connection with the Department of Radiology, College of Medicine. It has been accredited by the American Registry of X-Ray Technicians conducted by the Radiological Society of North America.

The American Registry of X-Ray Technicians conducts examinations for candidates who shall have had acceptable training and a total of at least two years' experience in radiological work, including the student year. Students who have satisfactorily completed the course of training in x-ray technic at the University of Nebraska College of Medicine and have had a second year of experience in an accepted department of radiology are accepted for examination. A certificate in x-ray technic is issued upon successful completion of the examination of the American Registry of X-Ray Technicians.

**Facilities for Instruction.**—Ample opportunity for experience in making of roentgenograms or x-ray films of patients is provided. During a period of 12 months about 4,500 radiographic examinations are made in the Department of Radiology for the University Hospital and Dispensary of the University of Nebraska College of Medicine. All types and positions of x-ray examinations are used in the department, including encephalography of the brain, cholangiography of the gall-bladder and bile ducts, mammography of the breast, as well as the more common studies such as cholecystography of the gall-bladder, urography of the kidneys and bladder, bronchography of the lungs, and examination of the stomach and intestines after administration of barium sulfate and other contrast media. The radiographic work is supervised by the radiologist and is directly in charge of a registered technician. Facilities are provided for deep x-ray therapy and radium therapy with adequate protection of all workers against exposure to radiation. About 2,000 x-ray treatments and 100 radium treatments are given in the department during a year. The library of the College of Medicine is maintained in the hospital. Forty-five thousand cataloged books and 400 current periodicals are available for study and for keeping in touch with current work in the field of x-ray diagnosis.

**Requirements for Admission.**—An applicant for admission to the course in x-ray technic shall be between 21 and 35 years of age and must be graduated from an accredited high school or other approved preparatory school. Records must be submitted covering the content and grades received in the preparatory studies. It is recommended that the preparatory work include English, Latin, physics, zoology, typing, shorthand, and secretarial work, although applicants are considered who do not present credits in all of these subjects. At least one year of collegiate study including English, physics, zoology, typing, shorthand, and secretarial work is recommended. Preference is given to applicants who are graduate nurses. Applicants must be in good health with no disabilities. The application should be accompanied by a photograph and the names of two people from whom references can be obtained. Admission is allowed in January and July. Only two students can be accepted annually.

Applications should be sent to the Chairman of the Department of Radiology, University of Nebraska College of Medicine, 42nd and Dewey avenue, Omaha, Nebraska. Application forms will be provided upon request.

**Fees and Expenses.**—There is a registration fee of \$1, payable on entrance. Four dollars per year for the student health service is payable on admission. A tuition fee of \$75 per year is charged and a minimum nonresident fee of \$25 per semester for students enrolling from other states. Students must maintain themselves and provide their own uniforms. The cost of textbooks is about \$15. Board may be obtained for \$6 a week in the vicinity of the hospital and rooms for \$2.50 to \$4 a week. Second-year student appointments are frequently made available which provide maintenance and a small monthly stipend.

**Curriculum.**—The course of study covers a period of one year. Students are accepted on a probationary basis during the first month. Students are in class or on duty in the Department of Radiology from 8 a.m. until 5 p.m. with a free hour for lunch. Students are not on duty during Saturday afternoon or Sunday. A vacation of two weeks is allowed at the Christmas holiday or in the summer. Immunization against diphtheria, typhoid fever, and smallpox is advised.

**Plan of Instruction.**—The course of training for students of x-ray technic consists primarily of an apprenticeship and demonstrations under the technician and of conferences with the radiologist. The instruction in related fields is given in conjunction with the School of Nursing consisting of instruction in anatomy, pathology, radiology and physical therapy, principles of general medicine, general surgery, gynecology, orthopedics, urology, first aid, and eye, ear, nose, and throat. The apprenticeship comprises 90 per cent of the period of training. The student works with the technician in the making of all types of x-ray studies. Gradually increasing independent responsibilities are given over to the student as experience increases. The student must become familiar with transcription of the reports of the radiologist covering the x-ray studies of roentgenograms made of patients and his reports on patients treated with x-ray and radium. In case the student is unfamiliar with the operation of a typewriter, additional courses must be taken at night school during the period of training.

The following formal courses are required of students in x-ray technic. These courses are provided through the courtesy of the School of Nursing by the College of Medicine.

(1) **ANATOMY.**—Lectures, class recitations, demonstrations, and laboratory work dealing with the structure of the human body. Preserved specimens and fresh animal specimens are used for study. 54 hours.

(2) **ELEMENTARY PATHOLOGY.**—Causes and general features of disease and disease processes. 18 hours.

(3) **MEDICINE.**—Lectures and clinics dealing with the causes, symptoms, course, treatment, complications, convalescence, and prevention of medical diseases. 20 hours.

(4) **SURGERY.**—Lectures and clinics designed to give the student a practical understanding of the causes, symptoms, and treatment of surgical diseases and to stress the importance of early recognition and methods of prevention of these diseases. 18 hours.

(5) **GYNECOLOGY.**—Anatomy and physiology of the female pelvic organs; the pathology of the pelvis; the symptoms and treatment of

gynecological diseases; complications, the care of patients before and after operation. Lectures and clinics. 10 hours.

(6) **ORTHOPEDICS.**—Lectures, classes, and demonstrations dealing with the causes, prevention, and mechanical and operative treatment and nursing care of diseases of the bones and joints and bony deformities. Demonstration of braces, splints, frames, and other appliances. 18 hours.

(7) **UROLOGY.**—Lectures dealing with the principal diseases of the genito-urinary tract. 4 hours.

(8) **PHYSICAL THERAPY.**—The basic principles and theory governing the use of physical agents, such as the electrical currents, high frequency currents, therapeutic exercises, ultraviolet, roentgen and radium therapy, are discussed in a series of lectures and demonstrations. 18 hours.

(9) **FIRST AID.**—Lectures, classes, and demonstrations. Standard Red Cross first aid course for which a Red Cross Certificate is awarded. 20 hours.

(10) **DISEASES OF EYE, EAR, NOSE, AND THROAT.**—Lectures and clinics dealing with the anatomy and physiology of the eye, ear, nose, and throat; the diseases of these organs, their treatment and prevention. 18 hours.

**Opportunities.**—There is a moderate demand for well-qualified technicians. These opportunities are primarily in the departments of radiology in hospitals and in the offices of doctors specializing in x-ray and radium work. There is no opportunity for independent operation of a laboratory by the technician since the use of x-ray in the diagnosis and treatment of diseases is legally the practice of medicine and in the interest of public welfare and safety must be carried out under the supervision of a registered physician. The remuneration for x-ray technicians varies from \$60 to \$150 a month with or without maintenance. In practice, it is frequently necessary for the technician to take dictation, typewrite reports, file correspondence, and in small hospitals to care for the hospital records on patients. Many of the duties are in the nature of minor nursing such as the sterilization of materials, administration of enemas, preparation of patients for examination, and the general care of the sick. The duties of secretary and practical nurse are frequently combined with those of operating an x-ray machine, processing of x-ray films, and handling of patients in x-ray work.

# TRAINING COURSE FOR LABORATORY TECHNICIANS

JAMES PERRY TOLLMAN, B.Sc., M.D.

*Professor of Clinical Pathology*

**Organization.**—The course for laboratory technicians has been established by authority of The Board of Regents, in connection with the Department of Pathology, College of Medicine. It has been accredited by the Committee on Education and Hospitals of the American Medical Association and the American Society of Clinical Pathology as being equipped and organized to furnish adequate training in laboratory technic. Graduates are eligible to take the examination for the Registry of Technicians maintained by the American Society of Clinical Pathology.

**Facilities for Instruction.**—The course is given in the University Hospital, and facilities of the University of Nebraska College of Medicine are available for instruction. The University Hospital is organized primarily for teaching and is under the control of The Board of Regents through the administration of the College of Medicine. It has a capacity of 240 beds, and accepts patients from over the state generally. All types of diseases are treated. Approximately 4,000 patients are admitted each year. The laboratory of the University Dispensary is also used for instruction. Approximately 4,000 patients are treated each year. The treatment of patients in the hospital and dispensary is directed by the faculty of the College of Medicine. The laboratory work requested includes all routine procedures, and many specialized tests that are required for unusual diseases which may be sent to the hospital from any part of the state.

The Library of the College of Medicine is maintained in the hospital. Forty-five thousand cataloged books and 400 current periodicals are available for study, and for keeping in touch with current work in the field of laboratory diagnosis.

**Requirements for Admission.**—The following list of courses meets the requirements of the Registry of Medical Technologists:

Biology: Eight semester hours of which at least 4 semester hours must be zoology.

Bacteriology: At least 3 semester hours. (If not available, other branches of biology may be substituted.)

Chemistry: General Inorganic Chemistry—At least 8 semester hours including 4 semester hours of laboratory. Organic Chemistry—A complete course, at least 4 semester hours with not less than 2 semester hours of laboratory. Quantitative Analysis—Three semester hours recommended.

Physics: At least 8 semester hours with 2 semester hours of laboratory recommended.

English: Six semester hours in English composition or rhetoric.

Electives: Sufficient to give a total of 60 semester hours of college credit. Sociology and psychology are recommended for electives.

A transcript of college credits is to be submitted with the application for admission. Secretarial training will be found most useful, as well as a reading knowledge of a foreign language. The candidate must be in good health.

**Fees and Expenses.**—There is a registration fee of \$1, payable on entrance. Four dollars per year for the student health service is payable on admission. A tuition fee of \$75 per year is charged and a minimum

nonresident fee of \$25 per semester for students enrolling from other states. In addition, the students are responsible for their own maintenance, uniforms, and laundry. Board and room may be obtained in private homes for approximately \$40 per month. Some allowance should be made for the purchase of books.

**Curriculum.**—The course of training is of 12 months' duration and is primarily on the apprenticeship basis, with rotating services of two months each. The plan of work is so arranged as to include all of the procedures usually carried out in a general hospital laboratory, as well as to acquaint the student with many of the more specialized types of laboratory determinations.

**BIOCHEMISTRY** includes examinations of the blood and other body fluids for normal and abnormal chemical constituents. As a rule, these are quantitative determinations, and include such tests as blood sugar, non-protein-nitrogen and creatinine determinations, as well as examinations of urine and of secretions of the gastro-intestinal tract and its associated glands. Between 6,000 and 7,000 examinations a year allow thorough training in this field.

**HEMATOLOGY** consists of examinations of the blood, particular attention being given to the cellular elements. Included in this service also are compatibility tests preparatory to transfusions. More than 7,000 examinations a year give adequate material for this phase of the work.

**ADVANCED HEMATOLOGY AND BIOCHEMISTRY** covers the more specialized procedures in the above branches, such as determination of the inorganic constituents of the blood, various tests of liver function, and special hematological procedures as erythrocyte fragility tests and cell volume measurements. Basal metabolic rate determinations are also included.

**BACTERIOLOGY** takes up the identification of pathogenic micro-organisms by their morphological, cultural, and immunological characteristics. Approximately 2,400 bacteriological examinations are made each year.

**PARASITOLOGY**, a study of the small animal forms which may cause disease, is included with this and is studied both from the material available in the hospital and dispensary and from demonstration specimens in the medical college.

**HISTOLOGIC TECHNIC** covers the making of tissue preparations, principally sections of various organs and tissues, for the microscopic study by the pathologist. A variety of methods are taken up during the training period. More than 4,000 sections are made yearly.

**SEROLOGY** includes primarily immunological procedures, and is carried out under the direct supervision of the bacteriology department of the College of Medicine.

**Plan of Instruction.**—The work is conducted under the direct supervision of the director and the laboratory technicians. Lectures are given, divided as follows:

**BACTERIOLOGY**, 40 hours. This course is especially arranged to meet the requirements of the medical technologists, covering background and technic as well as the specific consideration of pathogenic bacteria.

**PATHOLOGY**, 24 hours, combined with the pathology course for the School of Nursing. The general considerations of changes produced by disease are taken up, particular attention being given to the causes of disease, the specific changes produced by various disease processes, and their



## THE UNIVERSITY OF NEBRASKA

### **Junior Division**

Registers and counsels all freshmen and supervises terminal and adult special curricula. Conducts the University orientation course and a special testing program for guidance purposes.

### **College of Agriculture**

Leading to the degrees of Bachelor of Science in Agriculture and Bachelor of Science in Home Economics and to vocational education certificate.

Supervises Nebraska School of Agriculture at Curtis; Experiment Substations at North Platte, Scottsbluff, and Valentine; Nebraska Agricultural Experiment Station and Agricultural Extension Service, Lincoln; fruit farm, Union; agronomy farm, Havelock; Box Butte Experiment Farm, Alliance.

### **College of Arts and Sciences**

Leading to the degrees of Bachelor of Arts, Bachelor of Fine Arts, Bachelor of Music, Bachelor of Science.

### **School of Fine Arts**

Leading to the degrees of Bachelor of Fine Arts, Bachelor of Music, Bachelor of Fine Arts in Education, Bachelor of Music in Education.

### **School of Journalism**

Leading to the degrees of Bachelor of Arts, Bachelor of Science in Agriculture, and to certificate in journalism.

### **College of Business Administration**

Leading to the degree of Bachelor of Science in Business Administration.

### **College of Dentistry**

Leading to the degrees of Doctor of Dental Surgery and Bachelor of Science in Dentistry.

### **College of Engineering**

Leading to the degrees of Bachelor of the Art of Architecture, Bachelor of Science in Agricultural Engineering, Bachelor of Science in Architectural Engineering, Bachelor of Science in Chemical Engineering, Bachelor of Science in Civil Engineering, Bachelor of Science in Commercial Engineering, Bachelor of Science in Electrical Engineering, Bachelor of Science in Mechanical Engineering.

Supervises Nebraska Engineering Experiment Station, Lincoln.

### **Graduate College**

Leading to the degrees of Doctor of Philosophy, Master of Arts, Master of Architecture, Master of Science, Master of Science in Social Work, Master of Science in Agricultural Engineering, Master of Science in Architectural Engineering, Master of Science in Civil Engineering, Master of Science in Electrical Engineering, Master of Science in Mechanical Engineering, Agricultural Engineer, Chemical Engineer, Civil Engineer, Electrical Engineer, Mechanical Engineer.

### **Graduate School of Social Work**

Leading to the degree of Master of Science in Social Work, and to certificate in social work.

### **College of Law**

Leading to the degree of Bachelor of Laws.

### **College of Medicine**

Leading to the degrees of Doctor of Medicine, Bachelor of Science in Medicine, Bachelor of Science in Nursing, and Graduate Nurse.

### **School of Nursing**

Leading to the degrees of Bachelor of Science in Nursing and Graduate Nurse.

### **Department of Military Science and Tactics**

Leading to a reserve commission in the military forces of the United States.

### **College of Pharmacy**

Leading to the degree of Bachelor of Science in Pharmacy.

### **Department of Physical Education and Athletics**

Leading to the degree of Bachelor of Science in Education, and to certificate in physical education (women) and certificate in physical education and athletics (men).

### **Teachers College**

Leading to the degrees of Bachelor of Science in Education, Bachelor of Arts in Education, Bachelor of Fine Arts in Education, Bachelor of Music in Education. Supervises Teachers College High School, Lincoln.

### **Summer School**

### **Conservation and Survey Division**

### **University Extension Division**

*Separate bulletins or information concerning any college, school, or division may be obtained free by addressing the Director of Admissions, University of Nebraska, Lincoln*



