

2020

## Precision Medicine and Actionable Alterations in Lung Cancer: A Single Institution Experience

Isa Mambetsariev  
*City of Hope*

Yingyu Wang  
*City of Hope*

Chen Chen  
*City of Hope*


Sorena Nadaf  
*City of Hope*

Rebecca Pharaon  
*City of Hope*

Tell us how you used this information in this [short survey](#).

Follow this and additional works at: [https://digitalcommons.unmc.edu/com\\_bio\\_articles](https://digitalcommons.unmc.edu/com_bio_articles)

See next page for additional authors

 Part of the [Medical Biochemistry Commons](#), and the [Medical Molecular Biology Commons](#)

---

### Recommended Citation

Mambetsariev, Isa; Wang, Yingyu; Chen, Chen; Nadaf, Sorena; Pharaon, Rebecca; Fricke, Jeremy; Amanam, Idoroenyi; Amini, Arya; Bild, Andrea; Chu, Peiguo; Erhunmwunsee, Loretta; Kim, Jae; Munu, Janet; Pillai, Raju; Raz, Dan; Sampath, Sagus; Vora, Lalit; Qiu, Fang; Smith, Lynette M.; Batra, Surinder K.; Massarelli, Erminia; Koczywas, Marianna; Reckamp, Karen; and Salgia, Ravi, "Precision Medicine and Actionable Alterations in Lung Cancer: A Single Institution Experience" (2020). *Journal Articles: Biochemistry & Molecular Biology*. 130.

[https://digitalcommons.unmc.edu/com\\_bio\\_articles/130](https://digitalcommons.unmc.edu/com_bio_articles/130)

This Article is brought to you for free and open access by the Biochemistry & Molecular Biology at DigitalCommons@UNMC. It has been accepted for inclusion in Journal Articles: Biochemistry & Molecular Biology by an authorized administrator of DigitalCommons@UNMC. For more information, please contact [digitalcommons@unmc.edu](mailto:digitalcommons@unmc.edu).

---

## Authors

Isa Mambetsariev, Yingyu Wang, Chen Chen, Sorena Nadaf, Rebecca Pharaon, Jeremy Fricke, Idoroenyi Amanam, Arya Amini, Andrea Bild, Peiguo Chu, Loretta Erhunmwunsee, Jae Kim, Janet Munu, Raju Pillai, Dan Raz, Sagus Sampath, Lalit Vora, Fang Qiu, Lynette M. Smith, Surinder K. Batra, Erminia Massarelli, Marianna Koczywas, Karen Reckamp, and Ravi Salgia

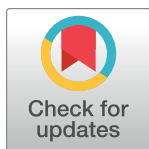
RESEARCH ARTICLE

# Precision medicine and actionable alterations in lung cancer: A single institution experience

Isa Mambetsariev<sup>1</sup>, Yingyu Wang<sup>2</sup>, Chen Chen<sup>2</sup>, Sorena Nadaf<sup>2</sup>, Rebecca Pharaon<sup>1</sup>, Jeremy Fricke<sup>1</sup>, Idoroenyi Amanam<sup>1</sup>, Arya Amini<sup>3</sup>, Andrea Bild<sup>1</sup>, Peiguo Chu<sup>4</sup>, Loretta Erhunmwunsee<sup>5</sup>, Jae Kim<sup>5</sup>, Janet Munu<sup>2</sup>, Raju Pillai<sup>4</sup>, Dan Raz<sup>5</sup>, Sagus Sampath<sup>3</sup>, Lalit Vora<sup>6</sup>, Fang Qiu<sup>7</sup>, Lynette Smith<sup>7</sup>, Surinder K. Batra<sup>8</sup>, Erminia Massarelli<sup>1</sup>, Marianna Koczywas<sup>1</sup>, Karen Reckamp<sup>1</sup>, Ravi Salgia<sup>1\*</sup>

**1** Department of Medical Oncology and Therapeutics Research, City of Hope, Duarte, California, United States of America, **2** Center for Informatics, City of Hope, Duarte, California, United States of America, **3** Department of Radiation Oncology, City of Hope, Duarte, California, United States of America, **4** Department of Pathology, City of Hope, Duarte, California, United States of America, **5** Department of Thoracic Surgery, City of Hope, Duarte, California, United States of America, **6** Department of Diagnostic Radiology, City of Hope, Duarte, California, United States of America, **7** Department of Biostatistics, University of Nebraska Medical Center, Omaha, Nebraska, United States of America, **8** Department of Biochemistry and Molecular Biology, University of Nebraska Medical Center, Omaha, Nebraska, United States of America

\* [rsalgia@coh.org](mailto:rsalgia@coh.org)



## OPEN ACCESS

**Citation:** Mambetsariev I, Wang Y, Chen C, Nadaf S, Pharaon R, Fricke J, et al. (2020) Precision medicine and actionable alterations in lung cancer: A single institution experience. PLoS ONE 15(2): e0228188. <https://doi.org/10.1371/journal.pone.0228188>

**Editor:** Ramon Andrade De Mello, Universidade do Algarve Departamento de Ciencias Biomedicas e Medicina, PORTUGAL

**Received:** July 17, 2019

**Accepted:** January 10, 2020

**Published:** February 11, 2020

**Peer Review History:** PLOS recognizes the benefits of transparency in the peer review process; therefore, we enable the publication of all of the content of peer review and author responses alongside final, published articles. The editorial history of this article is available here: <https://doi.org/10.1371/journal.pone.0228188>

**Copyright:** © 2020 Mambetsariev et al. This is an open access article distributed under the terms of the [Creative Commons Attribution License](https://creativecommons.org/licenses/by/4.0/), which permits unrestricted use, distribution, and reproduction in any medium, provided the original author and source are credited.

**Data Availability Statement:** All relevant study data are within the manuscript and its Supporting Information files. Any additional data is available

## Abstract

### Objectives

Oncology has become more reliant on new testing methods and a greater use of electronic medical records, which provide a plethora of information available to physicians and researchers. However, to take advantage of vital clinical and research data for precision medicine, we must initially make an effort to create an infrastructure for the collection, storage, and utilization of this information with uniquely designed disease-specific registries that could support the collection of a large number of patients.

### Materials and methods

In this study, we perform an in-depth analysis of a series of lung adenocarcinoma patients (n = 415) with genomic and clinical data in a recently created thoracic patient registry.

### Results

Of the 415 patients with lung adenocarcinoma, 59% (n = 245) were female; the median age was 64 (range, 22–92) years with a median OS of 33.29 months (95% CI, 29.77–39.48). The most common actionable alterations were identified in EGFR (n = 177/415 [42.7%]), ALK (n = 28/377 [7.4%]), and BRAF V600E (n = 7/288 [2.4%]). There was also a discernible difference in survival for 222 patients, who had an actionable alteration, with a median OS of 39.8 months as compared to 193 wild-type patients with a median OS of 26.0 months (P<0.001). We identified an unprecedented number of actionable alterations [53.5% (222/415)], including distinct individual alteration rates, as compared with 15.0% and 22.3% in TCGA and GENIE respectively.

through TCGA (<https://www.cancer.gov/tcga>) and AACR GENIE (<https://www.aacr.org/professionals/research/aacr-project-genie/aacr-project-genie-data/>).

**Funding:** Research reported in this publication included work performed in the Core facilities, Biostatistics Core and Center for Informatics Core, supported by the National Cancer Institute of the National Institutes of Health under award number P30CA033572. Pilot Projects and Early Phase Clinical Research Support reported in this publication was supported by the National Cancer Institute of the National Institutes of Health under award numbers R01CA218545 and U54CA209978. The content is solely the responsibility of the authors and does not necessarily represent the official views of the National Institutes of Health. The American Association for Cancer Research provided its financial and material support in the development of the AACR Project GENIE registry. The funders had no role in study design, data collection and analysis, decision to publish, or preparation of the manuscript.

**Competing interests:** The authors have declared that no competing interests exist.

**Abbreviations:** NSCLC, Non-small cell lung cancer; IRB, Institutional Review Board; FISH, Fluorescent in situ hybridization; LUAD, Lung adenocarcinoma; NGS, Next-Generation Sequencing; TKIs, tyrosine-kinase inhibitors; FDA, U.S. Food and Drug Administration; FFPE, formalin-fixed paraffin-embedded; IHC, immunohistochemistry; PCR, polymerase chain reaction; PFS, progression-free survival; THOR, Thoracic Oncology Registry; OS, overall survival; SWI/SNF, SWItch/Sucrose Non-Fermentable; NCCN, National Comprehensive Cancer Network; ASCO, American Society of Clinical Oncology.

## Conclusion

The use of patient registries, focused genomic panels and the appropriate use of clinical guidelines in community and academic settings may influence cohort selection for clinical trials and improve survival outcomes.

## Introduction

In response to advances in genomic testing and the rapid integration of new drugs and publications, oncologists have been adapting the concept of precision medicine where evidence-based medicine guides treatment decisions for individuals [1]. However, more effort is required to translate these benefits into real-world durable survivals for patients. Therefore, in this pursuit, several organizations have implemented the utilization of guidelines and pathways to ensure that patients receive proper testing and are assigned to proper treatment options, which in theory should then translate into durable survival outcomes [2–6]. This spur towards personalized medicine is primarily driven by the advances in genomic testing, biomarker-driven therapy, and immunotherapy that have transformed the landscape of oncology care and have greatly improved outcomes for patients [7–12]. Next-generation sequencing (NGS) has been highly influential in its ability to identify genomic alterations that confer sensitivity to approved and investigational targeted therapies in patients suffering from a variety of advanced stage cancers. The application of molecular testing is transforming cancer into a diverse template of genomic alterations that drive oncogenesis [13].

In view of the vast clinical data offered by NGS in non-small cell lung cancer (NSCLC), City of Hope (COH) has established a concise and efficient patient registry (Registry of Hope) for the collection of genomic alterations and outcomes-focused clinical data. Here we present the results of genomic testing performed as part of routine clinical care and correlative analysis of 415 lung adenocarcinoma (LUAD) patients within the Thoracic Oncology Registry (THOR). We hypothesized that the application of broad genomic testing provides not only a comprehensive overview of clinical heterogeneity in lung cancer but may also guide the future of oncology care as more and more precision medicine therapeutics emerge. In this study, we also evaluate the genomic profile of our COH cohort as it compares to national testing results found in GENIE/TCGA databases.

## Materials and methods

### Patients

Patients with advanced LUAD (n = 415), were enrolled in this analysis and evaluated at COH from 2008 to 2016, the data was collected between 2016 and 2018 through retrospective chart review on patients who had LUAD diagnosis and molecular testing performed at the discretion of their primary clinical provider. All 415 patients had metastatic disease, with 89 percent of patients who presented with metastatic disease at the time of initial diagnosis while others later developed metastatic disease. THOR was used to perform this study and data was collected into the registry over time on eligible patients. Different NGS platforms were used as described in S1 Table. Patients were categorized by race/ethnicity according to what they had reported to their oncologist and the data was pulled from the electronic medical record. The categories included African American, American Indian or Alaska Native, Asian, White, Native Hawaiian or Other Pacific Island, Other, and Unknown/Declined to answer. Confounding variables,

such as socioeconomic status, were not adjusted but the researchers felt that it was important to understand the diverse demographic makeup of the lung cancer patients and how it relates to their mutational status. The study was approved by the City of Hope institutional review board and in accord with an assurance filed with and approved by the Department of Health and Human Services at COH. This study was approved by the Institutional Review Board at COH under IRB 18217 and was conducted according to the Declaration of Helsinki. Data was de-identified and analyzed anonymously.

## Genomic analysis

Patient genomic alteration data was collected manually from clinical genomic tests alongside the clinical information. The molecular testing results in this study were all performed at around the time of metastatic diagnosis and did not include multiple time points. Clinical actionability of genomic alterations was assessed for each patient and included genomic alterations that had US Food and Drug Administration (FDA) approved targeted therapy in NSCLC. The actionable genomic alterations in this study were defined as EGFR exon 19 deletions and L858R mutation, ALK rearrangement, ROS1 rearrangement, NTRK fusions, and BRAF V600E alterations based on FDA-approved therapy available. MET exon 14 splice site/deletion was also included as actionable based on FDA accelerated path to approval [14, 15]. These alterations were chosen because they are largely exclusive of one another. Any patient who had at least one of these six gene alterations was considered to have an actionable alteration and anyone whose genomic testing results did not identify any of the six gene alterations was considered wild-type. When individual genes were evaluated for survival and various statistical analyses the patients with alterations were only compared with patients who were tested negative for that specific gene. Tile plot maps were generated using *seaborn* library for Python (version 2.7.14) [16].

## Comparison with TCGA and GENIE

For the alteration rate of the THOR data set, each gene that had an alteration was calculated as an individual patient divided by the number of patients who were tested for that gene. Genomic alteration data were retrieved from TCGA (study id = luad\_tcga\_pub) and GENIE (GENIE Cohort v4.1-public) [17, 18]. For each gene, only samples profiled in all molecular profiles including copy-number alteration, somatic mutations, and structural rearrangement were counted. Alteration rate for each gene was calculated by number of samples with at least one alteration divided by the number of profiled samples.

## Statistical analysis

Patient characteristic parameters were evaluated using the  $\chi^2$  test to test for association between characteristic values and age. OS was calculated from the date of diagnosis of metastatic disease to death or last follow-up visit. Patients who were thought to be alive at the end of the study were censored at the time of the last visit. Survival estimates for the studied patients were generated using the Kaplan-Meier method and the Cox proportional hazards models were used to estimate the hazard ratios. The analysis was performed using *survival* and *survminer* packages for R software (version 3.4.4) and SAS version 9.4 (SAS Institute, Cary, NC, United States). The assumption of proportional hazards was tested using goodness-of-fit tests, graphical methods and time-dependent variable methods. The extended Cox models using time-dependent variables were used to adjust the non-proportionality of variables. By adding interaction terms between time and the variables that violated the proportional hazards assumption, the models allow for the possible diverging survival curves over time.

## Results

### Patients

415 eligible patients with LUAD and tumor genotyping results were identified in THOR at the time of this study. The majority of patients were Stage IV ( $n = 369/415$  [89%]) at the time of initial diagnosis and 46/415 (11%) patients were stage I-III at diagnosis who eventually recurred as metastatic disease. There were 281 patients who underwent broad-based genomic testing (more than 30 genes) using NGS and 134 patients were tested for a few genes in a small panel (less than 10 genes). 254 (61%) patients were never-smokers ( $n = 212$ ) or had a smoking history of fewer than 10 pack-years (light smokers;  $n = 42$ ) and 161 (39%) patients were smokers with a history of 10–29 pack-years (medium smokers;  $n = 74$ ) or  $\geq 30$  pack-years (heavy smokers;  $n = 87$ ). The overall median age at diagnosis was 64 (22–92) and the median OS was 33.29 months (95% CI, 29.77–39.48), with the majority of patients being female ( $n = 245$  [59%]). Detailed patient characteristics noted in [Table 1](#).

### Genomic alterations

There were 323 different genes with evidence of genomic alteration in this group of patients. The most commonly occurring alterations in oncogenes were found in EGFR ( $n = 207/415$  [50%]), KRAS ( $n = 97/352$  [28%]), and ALK rearrangement ( $n = 28/377$  [7%]), while the most commonly occurring tumor suppressor genes consisted of TP53 ( $n = 140/283$  [49%]), LRP1B ( $n = 63/228$  [28%]), and STK11 ( $n = 39/278$  [14%]) ([Fig 1A](#)). The median number of genes altered in patients who underwent broad-based sequencing was 10. The most common actionable alterations were identified in EGFR L858R/exon 19 deletion ( $n = 177/415$  [42.7%]), ALK rearrangement ( $n = 28/377$  [7.4%]), ROS1 rearrangement ( $n = 3/257$  [1.2%]), BRAF V600E ( $n = 7/288$  [2.4%]), and MET exon 14 splice site/deletion ( $n = 7/287$  [2.4%]). No NTRK fusion alterations were identified in our cohort. 86% (177/207) of patients with EGFR alterations had an actionable alteration while 14% (29/207) consisted of exon 18 mutations, exon 20 insertions and other EGFR alterations including amplifications or substitution variants of unknown significance. EGFR alterations were split into five subtypes with the majority of Asians ( $n = 51/99$  [52%]) and whites ( $n = 46/95$  [48%]) presenting with an exon 19 deletion. KRAS alterations predominated in whites ( $n = 77/97$  [79%]) and patients with history of medium ( $n = 24/97$  [25%]) or heavy smoking ( $n = 47/97$  [48%]) ([Table 2](#)).

### Comparison with TCGA and GENIE

While the gene alteration rates of LUAD patients from TCGA/GENIE were comparable [[17](#), [18](#)], evident differences were observed between the patients of THOR and these two public consortiums ([Fig 1B](#)). Importantly, a large proportion of patients had actionable alterations [53.5% (222/415)] with the highest rate of actionable EGFR mutations at 42.7% (177/415), as compared with 9.1% and 17.1% actionable rate in TCGA/GENIE respectively. In particular, our dataset had a significantly increased prevalence of EGFR (49.9%), BRCA2 (14.1%), and chromatin modifying genes (ARID1B [18.8%], ARID1A [17.7%], MLL2 [13.6%] and MLL [13.2%]) as compared to the other datasets ([Table 3](#)). Analysis of subgroups of patients in GENIE that were diagnosed with or without metastasis showed similar gene alteration rates of these genes, indicating the difference we observed between THOR and TCGA/GENIE patients was not directly linked to metastasis ([Table 3](#)).

### Survival

The median OS of all patients was 33.3 months (95% CI; 29.8–39.5) and female patients had a better median OS of 39.8 months (95% CI, 33.5–45.5 months; HR, 1.56; 95% CI, 1.21–2.00;

Table 1. Patient characteristics.

Characteristic	Total, No. (%)	Age, No. (%)		P Value	Chi-square Statistic
		<70	≥ 70		
<b>Patients</b>	415 (100)	289 (100)	126 (100)	NA	NA
<b>Sex</b>				0.341	0.906
Female	245 (59)	175 (61)	70 (56)		
Male	170 (41)	114 (39)	56 (44)		
<b>Race</b>				0.127	9.956
African American	10 (2)	6 (2)	4 (3)		
American Indian or Alaska Native	2 (0)	1 (0)	1 (1)		
Asian	136 (33)	107 (37)	29 (23)		
White	247 (60)	161 (56)	86 (68)		
Native Hawaiian or Other Pacific Islander	3 (1)	3 (1)	0 (0)		
Other	12 (3)	8 (3)	4 (3)		
Unknown/Declined to Answer	5 (1)	3 (1)	2 (2)		
<b>Ethnicity</b>				0.150	3.796
Hispanic or Latino	40 (10)	28 (10)	12 (10)		
Not Hispanic or Latino	369 (89)	259 (90)	110 (87)		
Unknown/Declined to Answer	6 (1)	2 (1)	4 (3)		
<b>Smoking Status</b>				0.036	8.550
Never	212 (51)	159 (55)	53 (42)		
Light (<10 pack years)	42 (10)	31 (11)	11 (9)		
Medium (10–29 pack years)	74 (18)	44 (15)	30 (24)		
Heavy (≥ 30 pack years)	87 (21)	55 (19)	32 (25)		
<b>Stage</b>				0.004	13.595
I	15 (4)	7 (2)	8 (6)		
II	14 (3)	5 (2)	9 (7)		
III	17 (4)	10 (3)	7 (6)		
IV	369 (89)	267 (92)	102 (81)		
<b>EGFR (L858R/exon 19 deletion) *</b>				0.059	3.559
Alteration	177 (43)	132 (46)	45 (36)		
Tested Negative	238 (57)	157 (54)	81 (64)		
<b>ALK (Rearrangement)*</b>				0.001	10.349
Positive	28 (7)	27 (10)	1 (1)		
Tested Negative	349 (93)	235 (90)	114 (99)		
<b>ROS1 (Rearrangement)*</b>				0.233	1.422
Positive	3 (1)	3 (2)	0 (0)		
Tested Negative	254 (99)	172 (98)	82 (100)		
<b>BRAF (V600E)*</b>				0.319	0.995
Positive	7 (2)	6 (3)	1 (1)		
Tested Negative	281 (98)	194 (97)	90 (99)		
<b>MET (exon 14 splice-site/deletion)*</b>				0.022	5.228
Positive	7 (2)	2 (1)	5 (5)		
Tested Negative	280 (98)	194 (99)	86 (95)		
<b>KRAS</b>				<0.001	12.410
Positive	97 (28)	53 (22)	44 (40)		
Tested Negative	255 (72)	189 (78)	66 (60)		

(Continued)



Table 1. (Continued)

Characteristic	Total, No. (%)	Age, No. (%)		P Value	Chi-square Statistic
		<70	≥ 70		
TP53				0.306	1.046
Positive	140 (49)	99 (52)	41 (45)		
Tested Negative	143 (51)	93 (48)	50 (55)		

\*Only patients who had genomic test results were counted for each gene. Total number of patients with ALK, ROS1, BRAF, MET, KRAS and TP53 tested were 377, 257, 288, 287, 352, and 283 respectively.

<https://doi.org/10.1371/journal.pone.0228188.t001>

Table 4) as compared to median OS of 27.4 months for male patients. The OS was also better for never/light smokers (<10 pack years) with a median OS of 39.5 months (95% CI, 32.9–45.5 months; HR, 1.42; 95% CI, 1.10–1.83; Table 4) as compared to medium/heavy smokers (≥ 10 pack years) who had a median OS of 25.7 months (95% CI, 22.1–33.3 months). Two genes had violations of the proportional hazards assumption EGFR in actionable and KRAS in actionable, therefore, we added an interaction with time to account for changes in the HR. When comparing the median OS of KRAS positive patient (25.5 months; 95% CI, 17.6–32.9 months) with the median OS of actionable patient who had tested KRAS negative (41.1 months; 95% CI, 39.3–55.0 months), the difference was noticeable (Fig 2A), the HR changes from high risk of death in the KRAS positive patients initially to less risk over time (Table 4). Of the six actionable genes only ALK rearrangement patients had a difference in survival with a median OS of 82.6 months (95% CI, 82.6–NR; HR, 0.35; 95% CI, 0.17–0.68;) as compared to 26.6 months (95% CI, 22.1–33.1 months) for tested ALK rearrangement negative patients (Fig 2B). The genomic testing panel size had no discernible OS difference and broad-based sequencing had a median OS of 33.4 months (95% CI, 29.2–44.2 months) as compared to 33.5



**Fig 1. Landscape overview of molecular profiling in 415 THOR lung adenocarcinoma patients.** A) Tile plot of top 25 most prevalent genes and their demographic parameters sorted by genomic alteration rate and subtypes, including amplification, complex (more than one type of alteration), frameshift, indel (insertion/deletion), loss, missense, nonsense, rearrangement, and splice site. For each gene, the alteration rate was calculated by number of patients with alteration divided by the number of patients tested for this gene. B) Heatmap showing a comparison of the genomic alteration rates between THOR, TCGA, GENIE, and GENIE Metastatic for genes in 1A.

<https://doi.org/10.1371/journal.pone.0228188.g001>



Table 2. Patients characteristic table for EGFR and KRAS alteration subtypes.

Characteristic	EGFR, No. (%)*						KRAS, No. (%)				
	Total	exon 18 mutation	exon 19 deletion	exon 20 insertion	exon 21 mutation	Others	Total	G12	G13	Q61	Others
<b>Patients</b>	207 (100)	9 (4)	106 (51)	16 (8)	72 (35)	7 (3)	97 (100)	79 (81)	7 (7)	9 (9)	2 (2)
<b>Sex</b>											
Female	130 (63)	4 (44)	65 (61)	12 (75)	47 (65)	3 (43)	49 (51)	39 (49)	5 (71)	4 (44)	1 (50)
Male	77 (37)	5 (56)	41 (39)	4 (25)	25 (35)	4 (57)	48 (49)	40 (51)	2 (29)	5 (56)	1 (50)
<b>Age</b>											
<70	155 (75)	5 (56)	84 (79)	15 (94)	48 (67)	6 (86)	53 (55)	45 (57)	3 (43)	4 (44)	1 (50)
>= 70	52 (25)	4 (44)	22 (21)	1 (6)	24 (33)	1 (14)	44 (45)	34 (43)	4 (57)	5 (56)	1 (50)
<b>Race</b>											
African American	4 (2)	0 (0)	3 (3)	0 (0)	1 (1)	0 (0)	4 (4)	3 (4)	0 (0)	1 (11)	0 (0)
American Indian or Alaska Native	0 (0)	0 (0)	0 (0)	0 (0)	0 (0)	0 (0)	2 (2)	2 (3)	0 (0)	0 (0)	0 (0)
Asian	99 (48)	6 (67)	51 (48)	6 (38)	37 (51)	2 (29)	11 (11)	9 (11)	1 (14)	0 (0)	1 (50)
White	95 (46)	3 (33)	46 (43)	10 (63)	32 (44)	4 (57)	77 (79)	62 (78)	6 (86)	8 (89)	1 (50)
Native Hawaiian or Other Pacific Islander	0 (0)	0 (0)	0 (0)	0 (0)	0 (0)	0 (0)	1 (1)	1 (1)	0 (0)	0 (0)	0 (0)
Other	8 (4)	0 (0)	6 (6)	0 (0)	1 (1)	1 (14)	1 (1)	1 (1)	0 (0)	0 (0)	0 (0)
Unknown/Declined to Answer	1 (0)	0 (0)	0 (0)	0 (0)	1 (1)	0 (0)	1 (1)	1 (1)	0 (0)	0 (0)	0 (0)
<b>Ethnicity</b>											
Hispanic or Latino	17 (8)	0 (0)	13 (12)	1 (6)	2 (3)	1 (14)	11 (11)	10 (13)	0 (0)	1 (11)	0 (0)
Not Hispanic or Latino	188 (91)	9 (100)	92 (87)	15 (94)	69 (96)	6 (86)	84 (87)	68 (86)	6 (86)	8 (89)	2 (100)
Unknown/Declined to Answer	2 (1)	0 (0)	1 (1)	0 (0)	1 (1)	0 (0)	2 (2)	1 (1)	1 (14)	0 (0)	0 (0)
<b>Smoking Status</b>											
Never	137 (66)	5 (56)	72 (68)	9 (56)	50 (69)	3 (43)	17 (18)	14 (18)	1 (14)	1 (11)	1 (50)
Light (<10 pack years)	23 (11)	1 (11)	11 (10)	3 (19)	7 (10)	2 (29)	9 (9)	7 (9)	1 (14)	1 (11)	0 (0)
Medium (10–29 pack years)	39 (19)	3 (33)	21 (20)	3 (19)	11 (15)	1 (14)	24 (25)	19 (24)	1 (14)	3 (33)	1 (50)
Heavy (>= 30 pack years)	8 (4)	0 (0)	2 (2)	1 (6)	4 (6)	1 (14)	47 (48)	39 (49)	4 (57)	4 (44)	0 (0)

\*Three patients carried two subtypes of EGFR alteration (e.g., exon 19 deletion and exon 18 mutation) and were counted two times.

<https://doi.org/10.1371/journal.pone.0228188.t002>

months (95% CI, 27.5–41.2 months) for the small panel (Fig 2C). There was a discernible difference in survival for 222 patients, who had an actionable alteration (such as EGFR L858R/exon 19 deletion, ALK rearrangements, ROS1 rearrangements, BRAF V600E, NTRK fusions and MET exon 14 splice site/deletion), with a median OS of 39.8 months as compared to 193 patients who were wild-type with a median OS of 26.0 months (Fig 2D).

Table 3. Genomic alteration rates of THOR referring to TCGA/GENIE/GENIE metastasis patients.

Gene	Altered	Tested	THOR Alteration Rate (n = 415)	TCGA Alteration Rate (n = 507)	GENIE Alteration Rate (n = 6529)	GENIE Metastasis Alteration Rate (n = 2697)
EGFR	207	415	50%	16%	25%	25%
TP53	140	283	50%	52%	47%	55%
LRP1B	63	228	28%	37%	22%	23%
KRAS	97	352	28%	33%	34%	30%
ARID1B	36	191	19%	7%	5%	6%
MLL3	35	190	18%	15%	6%	7%
SPTA1	35	190	18%	31%	10%	13%
ARID1A	41	232	18%	7%	8%	9%
FAT1	29	191	15%	12%	9%	10%
BRCA2	33	234	14%	6%	5%	6%
STK11	39	278	14%	16%	14%	15%
MLL2	31	228	14%	8%	9%	10%
MLL	30	228	13%	7%	5%	5%
GPRI24	29	228	13%	7%	5%	6%
ATM	35	276	13%	10%	8%	9%
KEAP1	27	228	12%	20%	15%	17%
MET	33	287	12%	7%	5%	7%
NKX2-1	26	228	11%	14%	8%	9%
ALK	42	377	11%	7%	5%	6%
SETD2	25	228	11%	7%	7%	7%
NFKBIA	24	228	11%	12%	4%	6%
SMARCA4	24	228	11%	10%	9%	11%
APC	28	274	10%	6%	5%	6%
SDHA	19	191	10%	14%	4%	6%
NOTCH1	27	276	10%	5%	3%	4%

Genomic alteration data were collected for 415 THOR lung adenocarcinoma patients, 507 TCGA Lung Adenocarcinoma patients (study id = luad\_tcga\_pan\_can\_atlas\_2018), 6529 GENIE Lung Adenocarcinoma patients (GENIE Cohort v5.0-public, cancer type detailed = lung adenocarcinoma), and 2697 GENIE metastasis lung adenocarcinoma patients (GENIE Cohort v5.0-public, cancer type detailed = lung adenocarcinoma, sample type = Metastasis).

<https://doi.org/10.1371/journal.pone.0228188.t003>

## Discussion

The actualization of tyrosine kinase inhibitors, monoclonal antibodies, and immunotherapy drugs has pushed the treatment of lung cancer forward, however, the reality remains that lung cancer is the leading cause of cancer deaths [19]. Genomic testing has become more crucial in oncology care and recently there have been several studies launched that aim to match targeted therapy to patients based on their omic profile [20–27]. It is now a standard recommendation that patients with advanced NSCLC undergo routine molecular testing for identification of certain known genomic abnormalities, most notably ALK rearrangements, EGFR mutations, BRAF V600E, ROS1 rearrangements, and NTRK fusions [5]. More so several inhibitors for various markers, such as ERBB2, MET, and RET are quickly being implemented in standard clinical care and several others await FDA approval [28–32]. Thus, this study aims to highlight a unique single-site perspective into the clinical heterogeneity found in our cohort of patients that is largely composed of clinically relevant markers that will benefit from recent advances in precision medicine and a cohort that is distinctly different from other databases [17, 18]. To achieve durable survivals for patients it vital to implement appropriate testing at diagnosis and

Table 4. Cox proportional hazard regression models for univariate survival.

Risk Factor	Median Survival (95% CI), months	Hazard Ratio (95% CI)	P Value
Sex, Male vs Female	27.4 (20.6–31.7) vs 39.8 (33.5–45.5)	1.56 (1.21–2.00)	<0.001
Age, > = 70 vs <70	29.0 (19.5–36.5) vs 36.3 (31.4–42.9)	1.41 (1.08–1.85)	0.012
Smoking Status, Medium + Heavy vs Never + Light	25.7 (22.1–33.3) vs 39.5 (32.9–45.5)	1.42 (1.10–1.83)	0.006
EGFR (Actionable) <sup>ab</sup>			
Positive vs Negative	39 (32.6–43.8) vs 26 (22.1–32.9)	0.46 (0.31–0.68)	0.0001
EGFR x time		1.02 (1.01–1.03)	0.0022
ALK (Rearrangement) <sup>b</sup>			
Positive vs Negative	82.6 (82.6–NR) vs 26.6 (22.1–33.1)	0.35 (0.17–0.68)	0.002
ROS1 (Rearrangement) <sup>b</sup>			
Positive vs Negative	NR vs 26 (20.8–33.3)	-	-
BRAF (V600E) <sup>b</sup>			
Positive vs Negative	73.4 (11.6–NR) vs 28.0 (22.2–34.4)	0.70 (0.26–1.91)	0.487
MET (exon 14 Splice-site/Deletion) <sup>b</sup>			
Positive vs Negative	17.2 (8.77–NR) vs 28.0 (22.2–34.4)	0.59 (0.19–1.89)	0.377
KRAS in Actionable <sup>c</sup>			
Positive vs Negative	25.5 (17.6–32.9) vs 41.4 (39.3–55.0)	2.80 (1.70–4.61)	<0.0001
KRAS x time		0.98 (0.97–0.99)	0.0065
KRAS in Non-Actionable <sup>d</sup>			
Positive vs Negative	25.5 (17.6–32.9) vs 27.7 (22.2–42.9)	1.06 (0.73–1.53)	0.769
TP53 in Actionable <sup>c</sup>			
Positive vs Negative	25.5 (20.6–34.9) vs 67.6 (39.5–NR)	1.87 (1.12–3.12)	0.017
TP53 in Non-Actionable <sup>d</sup>			
Positive vs Negative	25.5 (20.6–34.9) vs 30.1 (21.6–54.0)	1.13 (0.75–1.69)	0.561

<sup>a</sup>. EGFR All patients had EGFR tested.

<sup>b</sup>. For each gene, patients carrying actionable alterations were compared with patients who were tested negative, with patients carrying actionable alterations from other genes excluded from its analysis.

<sup>c</sup>. For KRAS and TP53, patients who were tested positive with no actionable alteration were compared with patients who were tested negative but had actionable gene alterations.

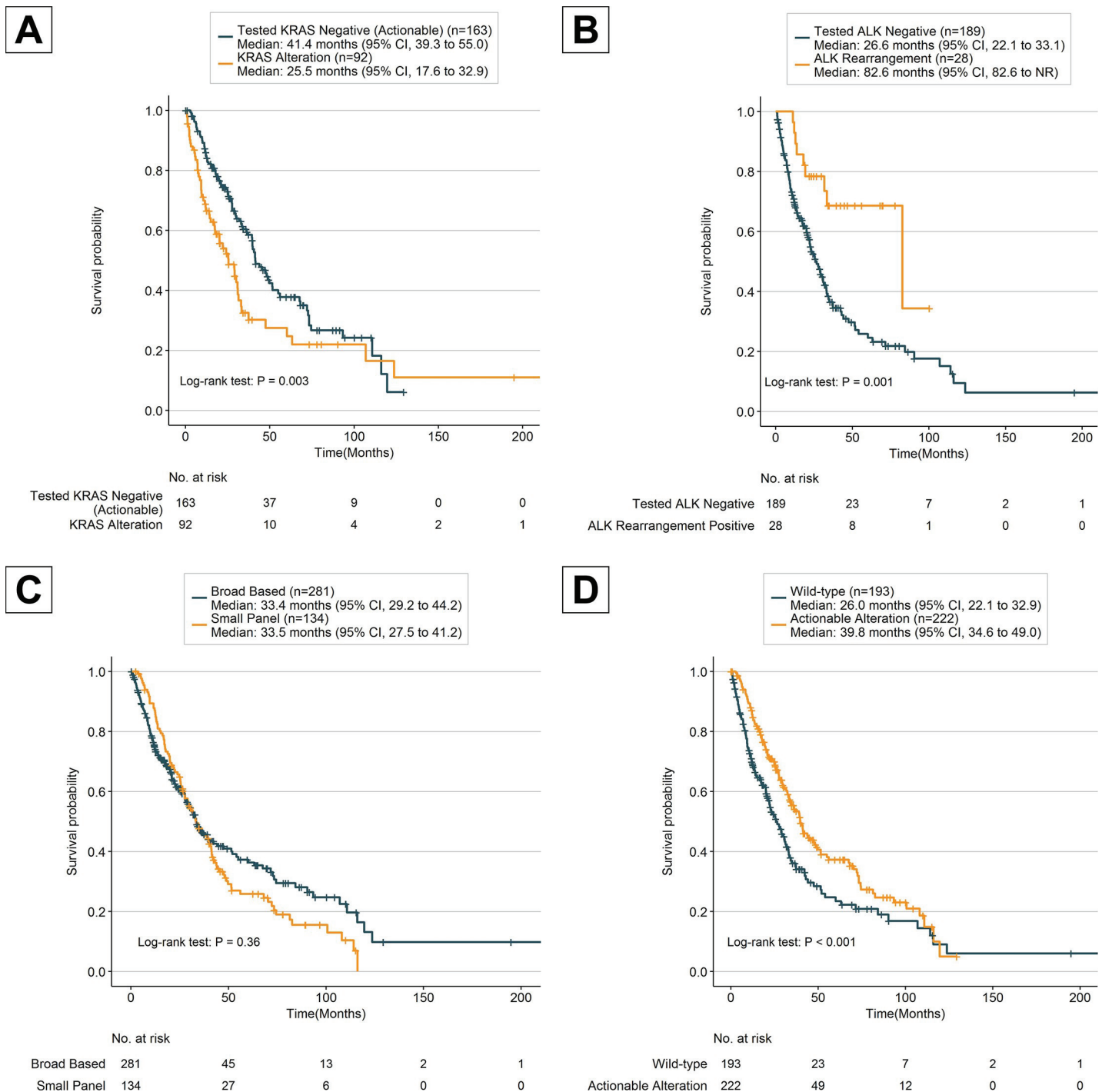
<sup>d</sup>. For KRAS and TP53, patients who were tested positive were compared with patients who were tested negative and patients who had actionable gene alterations were excluded from both groups.

<https://doi.org/10.1371/journal.pone.0228188.t004>

upon progression, and guided treatment plans (both guidelines and pathways) through consolidation of clinical data into patient registries [33].

## Precision genomics

In a recent study that compared the use of broad-based genomic sequencing versus small-panel testing, it was shown that there was no significant difference in OS [34]. While our data recapitulates that broad-based sequencing panels were not independently associated with better median OS, our results also show that patients with actionable alterations had a discernibly improved median OS as compared to wild-type patients who did not have an actionable alteration. Most notably ALK rearrangement patients had an improved OS as compared to tested ALK rearrangement negative (median OS 82.6 vs 26.6 months), which is suspected due to appropriate molecular testing at presentation and apt selection of therapy based on results [35, 36]. While Presley et al. include ALK in their small routine panel it should be noted that in a study evaluating the methods of ALK rearrangement testing it was found that comprehensive



**Fig 2. Kaplan-Meier estimates of overall survival.** A) Overall survival among KRAS altered and tested KRAS negative patients with actionable alteration. B) Overall survival among ALK rearrangement and tested ALK rearrangement negative patients. C) Overall survival among broad-based panel tested and small-panel tested patients. D) Overall survival among actionable altered and wild-type patients.  $P$  values comparing risk groups were calculated with the log-rank test.

<https://doi.org/10.1371/journal.pone.0228188.g002>

genomic profiling by NGS was able to identify a number of patients who had previously tested negative using the standard ALK fluorescence in situ hybridization (FISH) assay [37]. While there were several studies that showed improved PFS with targeted therapy which did not

translate into OS benefit [7–12], more recent results in lung cancer have shown there is a durable survival benefit for patients who are properly treated with appropriate inhibitors as opposed to patients who do not receive targeted therapy [30, 38–41]. 53.5% (222/415) of patients presented with actionable alterations in our cohort had specific targeted therapies approved by the FDA. While many question the utility to targeted therapy due to low actionable alteration rates [42–44], this study shows that actionable alterations rates may vary demographically and by location presenting a challenge for improving outcomes that may be addressed through the implementation of clinical pathway guidelines and continuing genomic education [45].

### Guided value-based medicine

Several studies have been performed that have determined the cost-effectiveness of NGS panels over single gene testing and in one study there was an improvement in PFS without additional health care costs to the patient [46–48]. In several meta-analyses of prospective clinical trials for solid tumors and hematological malignancies, personalized treatment strategies showed superior outcomes to those in control arms [49–54]. Therefore, the question becomes not whether genomic testing should be performed with a specific panel but whether the patient is treated accordingly based on all information available to improve their individual outcomes [54]. For this purpose, several associations including the National Comprehensive Cancer Network (NCCN) have issued guidelines which strongly emphasize not only testing for EGFR, ALK, ROS1, BRAF, and PD-L1 alterations but more importantly advise to conduct broader molecular profiling to identify rare mutational drivers [5, 6]. In practice, it was reported that the majority of oncologists (60%) in North America did not utilize genomic alteration results in their treatment decision making [55, 56].

To improve these statistics, the American Society of Clinical Oncology (ASCO) established in 2015 a task force on clinical pathways to improve treatment decision making through evidence-based clinical pathway guidelines [3]. Since then, ASCO revealed in a 2017 State of Cancer Care in America report a 42% increase from 2014 to 2016 of practices complying with a pathway program [57, 58]. Moreover, a recent study that evaluated 7 cancer programs, including COH (both academic and community), that employed clinical pathways demonstrated unprecedentedly high rates of molecular testing and concordant appropriate first-line treatment decision making based on actionable biomarkers [59]. Thusly, the end-goal for improvement of outcomes can only be achieved under the right circumstances where the appropriate testing is performed and the accurate treatment decisions are made.

### THOR in comparison with TCGA and GENIE

While there is some overlap in the alteration rates between our cohort and the publicly available datasets (TCGA/GENIE), there are more differences in the comparable rates of occurrences. Our study identified a disproportionately high rate of EGFR alterations with 49.9% (207/415) and actionable alteration rate with 53.5%, which was notably higher than the TCGA/GENIE rates [17, 18]. However, these results are consistent with a large gene profiling study of NSCLC from the Icahn School of Medicine at Mount Sinai that was able to identify actionable alterations in 65% of the cases [60]. While it is estimated that the actionability rate for NSCLC is around 30%, the results of this single-site analysis warrant further consideration to understand the heterogeneity of lung cancer in different populations and how this may impact survival outcomes [17]. This may in part be due to referrals to COH for clinical care and potential clinical trials, but it cannot be discounted that the high rates of EGFR alterations may be due to a large number of Asian never-smokers at presentation. In fact, 72.8% (99/136)

of Asians in our cohort presented with an EGFR alteration as compared with 50.0% EGFR incidence rate found in the GENIE dataset [17]. This large occurrence of EGFR in Asian never-smokers is consistent with another study that identified 75.3% of Asian never-smokers who harbored EGFR mutations [61].

Unexpectedly a number of chromatin modulating genes were irregularly prevalent in our cohort as compared with TCGA/GENIE. ARID1A alterations were highly expressed in our cohort alongside ARID1B and the two are known to be mutually exclusive within individual SWItch/Sucrose Non-Fermentable (SWI/SNF) chromatin remodeling complexes [62]. However, ARID1A has been shown to be the strongest tumor suppressor gene amongst the ARID genes in various cancers [63–66] and ARID1A is known to have the highest alteration rate among the SWI/SNF subunit genes [67]. The dysfunction of these complexes is known to destabilize the lung cancer genome by affecting chromatin remodeling and also disrupt DNA repair [68–70]. Furthermore, the high prevalence of genes such as MLL, MLL2, and BRCA2 suggest that other chromatin remodeling motifs may be involved in tumorigenesis of these patients rather than an event specific to a particular tumor type [71, 72].

## Conclusion

The limitation of current oncology practice is the speed of integration and adaptation to the rapidly advancing testing modalities and multiple therapeutic options that are garnering swift approval in various cancer types [73]. These efforts will require standardization of molecular testing modalities, cohesive guidelines, and pathways for precision medicine, and focused patient registries to enable cohort management and efficient clinical trial accrual. While our study was limited by the sample size and the demographics of our patients, it is still important to utilize these tools to guide physicians in determining which patient groups can benefit from clinical trials, tumor resistance or chemotherapy sensitivity. Review of the genomic data of our lung cancer patient cohorts in THOR showed significantly different incidences of actionable mutations as compared to the public datasets. Thus, instead of relying on generalized demographics and genomic results within the public datasets, the individual centers are required to perform their own assessments of their cohorts in order to have a proper analysis of their clinic population.

## Supporting information

**S1 Table. NGS platforms of testing.**

(DOCX)

**S2 Table. Actionable genomic alteration rates in TCGA and GENIE.**

(DOCX)

**S3 Table. Multivariate Cox Proportional Hazards Regression Models for Adjusted for Sex, Age, and Smoking Status.**

(DOCX)

**S4 Table. Cox Proportional Hazards Regression Models for Actionable Genes Adjusted for Sex, Age and Smoking Status.**

(DOCX)

**S1 File. Patient clinical and molecular marker data.** For molecular markers, "0" means tested negative, and blank means not tested.

(XLSX)



## Acknowledgments

We thank the clinical staff at City of Hope for their skill and dedication in helping the patients presented in this manuscript. The authors would like to acknowledge the American Association for Cancer Research and its support in the development of the AACR Project GENIE registry, as well as members of the consortium for their commitment to data sharing. Interpretations are the responsibility of study authors. The results published here are in whole or part based upon data generated by the TCGA Research Network: <https://www.cancer.gov/tcga>.

## Author Contributions

**Conceptualization:** Isa Mambetsariev, Yingyu Wang, Sorena Nadaf, Rebecca Pharaon, Idoroenyi Amanam, Arya Amini, Andrea Bild, Peiguo Chu, Loretta Erhunmwunsee, Jae Kim, Janet Munu, Raju Pillai, Dan Raz, Sagus Sampath, Lalit Vora, Erminia Massarelli, Marianna Koczywas, Karen Reckamp, Ravi Salgia.

**Data curation:** Isa Mambetsariev, Yingyu Wang, Chen Chen, Rebecca Pharaon, Jeremy Fricke, Idoroenyi Amanam, Fang Qiu.

**Formal analysis:** Isa Mambetsariev, Yingyu Wang, Chen Chen, Fang Qiu, Lynette Smith, Surinder K. Batra.

**Funding acquisition:** Ravi Salgia.

**Investigation:** Chen Chen, Rebecca Pharaon, Ravi Salgia.

**Methodology:** Isa Mambetsariev, Yingyu Wang, Chen Chen, Ravi Salgia.

**Project administration:** Sorena Nadaf, Erminia Massarelli, Karen Reckamp, Ravi Salgia.

**Resources:** Sorena Nadaf, Ravi Salgia.

**Supervision:** Sorena Nadaf, Erminia Massarelli, Karen Reckamp, Ravi Salgia.

**Validation:** Isa Mambetsariev, Chen Chen, Fang Qiu, Lynette Smith, Surinder K. Batra, Erminia Massarelli, Karen Reckamp.

**Visualization:** Isa Mambetsariev, Yingyu Wang, Chen Chen, Rebecca Pharaon.

**Writing – original draft:** Isa Mambetsariev, Yingyu Wang, Chen Chen, Sorena Nadaf, Rebecca Pharaon, Jeremy Fricke, Erminia Massarelli, Karen Reckamp, Ravi Salgia.

**Writing – review & editing:** Isa Mambetsariev, Yingyu Wang, Chen Chen, Sorena Nadaf, Rebecca Pharaon, Jeremy Fricke, Idoroenyi Amanam, Arya Amini, Andrea Bild, Peiguo Chu, Loretta Erhunmwunsee, Jae Kim, Janet Munu, Raju Pillai, Dan Raz, Sagus Sampath, Lalit Vora, Fang Qiu, Lynette Smith, Surinder K. Batra, Erminia Massarelli, Marianna Koczywas, Karen Reckamp, Ravi Salgia.

## References

1. Marignani P, Kim J, Greer W, Xu Z. P3.13–31 Creating a Precision Medicine Pipeline for Lung Cancers. *Journal of Thoracic Oncology*. 2018; 13(10):S989. <https://doi.org/10.1016/j.jtho.2018.08.1872>
2. Zon RT, Goss E, Vogel VG, Chlebowski RT, Jatoi I, Robson ME, et al. American Society of Clinical Oncology policy statement: the role of the oncologist in cancer prevention and risk assessment. *J Clin Oncol*. 2009; 27(6):986–93. Epub 2008/12/17. <https://doi.org/10.1200/JCO.2008.16.3691> PMID: 19075281; PubMed Central PMCID: PMC2668639.
3. Zon RT, Frame JN, Neuss MN, Page RD, Wollins DS, Stranne S, et al. American Society of Clinical Oncology Policy Statement on Clinical Pathways in Oncology. *J Oncol Pract*. 2016; 12(3):261–6. Epub 2016/01/14. <https://doi.org/10.1200/JOP.2015.009134> PMID: 26759491.

4. Lindeman NI, Cagle PT, Beasley MB, Chitale DA, Dacic S, Giaccone G, et al. Molecular testing guideline for selection of lung cancer patients for EGFR and ALK tyrosine kinase inhibitors: guideline from the College of American Pathologists, International Association for the Study of Lung Cancer, and Association for Molecular Pathology. *Arch Pathol Lab Med*. 2013; 137(6):828–60. Epub 2013/04/05. <https://doi.org/10.5858/arpa.2012-0720-OA> PMID: 23551194; PubMed Central PMCID: PMC4162344.
5. Lindeman NI, Cagle PT, Aisner DL, Arcila ME, Beasley MB, Bernicker EH, et al. Updated Molecular Testing Guideline for the Selection of Lung Cancer Patients for Treatment With Targeted Tyrosine Kinase Inhibitors: Guideline From the College of American Pathologists, the International Association for the Study of Lung Cancer, and the Association for Molecular Pathology. *Arch Pathol Lab Med*. 2018; 142(3):321–46. Epub 2018/01/23. <https://doi.org/10.5858/arpa.2017-0388-CP> PMID: 29355391.
6. (NCCN). NCCN. NCCN Clinical practice guidelines in Oncology (NCCN Guidelines) for Non-small cell lung cancer. 2019 [cited 2019 January 4]. Available from: <http://www.nccn.org>.
7. Mok TS, Wu YL, Thongprasert S, Yang CH, Chu DT, Saijo N, et al. Gefitinib or carboplatin-paclitaxel in pulmonary adenocarcinoma. *N Engl J Med*. 2009; 361(10):947–57. Epub 2009/08/21. <https://doi.org/10.1056/NEJMoa0810699> PMID: 19692680.
8. Planchard D, Smit EF, Groen HJM, Mazieres J, Besse B, Helland A, et al. Dabrafenib plus trametinib in patients with previously untreated BRAF(V600E)-mutant metastatic non-small-cell lung cancer: an open-label, phase 2 trial. *Lancet Oncol*. 2017; 18(10):1307–16. Epub 2017/09/19. [https://doi.org/10.1016/S1470-2045\(17\)30679-4](https://doi.org/10.1016/S1470-2045(17)30679-4) PMID: 28919011.
9. Soria JC, Wu YL, Nakagawa K, Kim SW, Yang JJ, Ahn MJ, et al. Gefitinib plus chemotherapy versus placebo plus chemotherapy in EGFR-mutation-positive non-small-cell lung cancer after progression on first-line gefitinib (IMPRESS): a phase 3 randomised trial. *Lancet Oncol*. 2015; 16(8):990–8. Epub 2015/07/15. [https://doi.org/10.1016/S1470-2045\(15\)00121-7](https://doi.org/10.1016/S1470-2045(15)00121-7) PMID: 26159065.
10. Rosell R, Carcereny E, Gervais R, Vergnenegre A, Massuti B, Felip E, et al. Erlotinib versus standard chemotherapy as first-line treatment for European patients with advanced EGFR mutation-positive non-small-cell lung cancer (EURTAC): a multicentre, open-label, randomised phase 3 trial. *Lancet Oncol*. 2012; 13(3):239–46. Epub 2012/01/31. [https://doi.org/10.1016/S1470-2045\(11\)70393-X](https://doi.org/10.1016/S1470-2045(11)70393-X) PMID: 22285168.
11. Sequist LV, Yang JC, Yamamoto N, O'Byrne K, Hirsh V, Mok T, et al. Phase III study of afatinib or cisplatin plus pemetrexed in patients with metastatic lung adenocarcinoma with EGFR mutations. *J Clin Oncol*. 2013; 31(27):3327–34. Epub 2013/07/03. <https://doi.org/10.1200/JCO.2012.44.2806> PMID: 23816960.
12. Le Tourneau C, Delord JP, Goncalves A, Gavoille C, Dubot C, Isambert N, et al. Molecularly targeted therapy based on tumour molecular profiling versus conventional therapy for advanced cancer (SHIVA): a multicentre, open-label, proof-of-concept, randomised, controlled phase 2 trial. *Lancet Oncol*. 2015; 16(13):1324–34. Epub 2015/09/08. [https://doi.org/10.1016/S1470-2045\(15\)00188-6](https://doi.org/10.1016/S1470-2045(15)00188-6) PMID: 26342236.
13. Sabari JK, Santini F, Bergagnini I, Lai WV, Arbour KC, Drilon A. Changing the Therapeutic Landscape in Non-small Cell Lung Cancers: the Evolution of Comprehensive Molecular Profiling Improves Access to Therapy. *Curr Oncol Rep*. 2017; 19(4):24. Epub 2017/03/18. <https://doi.org/10.1007/s11912-017-0587-4> PMID: 28303491.
14. PFIZER'S XALKORI® (CRIZOTINIB) RECEIVES FDA BREAKTHROUGH THERAPY DESIGNATION IN TWO NEW INDICATIONS 2018 [cited 2019 January 4]. Available from: <https://investors.pfizer.com/investor-news/press-release-details/2018/Pfizers-XALKORI-crizotinib-Receives-FDA-Breakthrough-Therapy-Designation-in-Two-New-Indications/default.aspx>.
15. Drilon AE, Camidge DR, Ou S-HI, Clark JW, Socinski MA, Weiss J, et al. Efficacy and safety of crizotinib in patients (pts) with advanced MET exon 14-altered non-small cell lung cancer (NSCLC). *Journal of Clinical Oncology*. 2016; 34(15\_suppl):108–. [https://doi.org/10.1200/JCO.2016.34.15\\_suppl.108](https://doi.org/10.1200/JCO.2016.34.15_suppl.108)
16. Waskom M, Botvinnik O, O'Kane D, Hobson P, Ostblom J, Lukauskas S, et al. mwaskom/seaborn: v0.9.0 (July 2018). Zenodo. 2018. <https://doi.org/doi:10.5281/zenodo.1313201>
17. AACR Project GENIE: Powering Precision Medicine through an International Consortium. *Cancer Discovery*. 2017; 7(8):818–31. <https://doi.org/10.1158/2159-8290.CD-17-0151> PMID: 28572459
18. The Cancer Genome Atlas Research N, Collisson EA, Campbell JD, Brooks AN, Berger AH, Lee W, et al. Comprehensive molecular profiling of lung adenocarcinoma. *Nature*. 2014; 511:543. <https://doi.org/10.1038/nature13385> <https://www.nature.com/articles/nature13385#supplementary-information>. PMID: 25079552
19. Siegel RL, Miller KD, Jemal A. Cancer statistics, 2018. *CA Cancer J Clin*. 2018; 68(1):7–30. Epub 2018/01/10. <https://doi.org/10.3322/caac.21442> PMID: 29313949.

20. Gerber DE, Oxnard GR, Govindan R. ALCHEMIST: Bringing genomic discovery and targeted therapies to early-stage lung cancer. *Clin Pharmacol Ther.* 2015; 97(5):447–50. Epub 2015/02/14. <https://doi.org/10.1002/cpt.91> PMID: 25677079; PubMed Central PMCID: PMC4839167.
21. Coyne GO, Takebe N, Chen AP. Defining precision: The precision medicine initiative trials NCI-MPACT and NCI-MATCH. *Curr Probl Cancer.* 2017; 41(3):182–93. Epub 2017/04/05. <https://doi.org/10.1016/j.currprobcancer.2017.02.001> PMID: 28372823.
22. Herbst RS, Gandara DR, Hirsch FR, Redman MW, LeBlanc M, Mack PC, et al. Lung Master Protocol (Lung-MAP)—A Biomarker-Driven Protocol for Accelerating Development of Therapies for Squamous Cell Lung Cancer: SWOG S1400. *Clinical cancer research: an official journal of the American Association for Cancer Research.* 2015; 21(7):1514–24. <https://doi.org/10.1158/1078-0432.CCR-13-3473> PMID: 25680375.
23. Carey LA, Winer EP. I-SPY 2—Toward More Rapid Progress in Breast Cancer Treatment. *N Engl J Med.* 2016; 375(1):83–4. Epub 2016/07/15. <https://doi.org/10.1056/NEJMe1603691> PMID: 27406352.
24. Kris MG, Johnson BE, Berry LD, Kwiatkowski DJ, Iafrate AJ, Wistuba II, et al. Using multiplexed assays of oncogenic drivers in lung cancers to select targeted drugs. *JAMA.* 2014; 311(19):1998–2006. Epub 2014/05/23. <https://doi.org/10.1001/jama.2014.3741> PMID: 24846037; PubMed Central PMCID: PMC4163053.
25. Andrews A. ASCO and NCI Launch Largest Precision Medicine Trials Using Real-World Evidence. *Am Health Drug Benefits.* 2015; 8(Spec Issue):37. Epub 2015/09/19. PMID: 26380622; PubMed Central PMCID: PMC4570058.
26. Seibel NL, Janeway K, Allen CE, Chi SN, Cho YJ, Glade Bender JL, et al. Pediatric oncology enters an era of precision medicine. *Curr Probl Cancer.* 2017; 41(3):194–200. Epub 2017/03/28. <https://doi.org/10.1016/j.currprobcancer.2017.01.002> PMID: 28343740.
27. Takebe N, McShane L, Conley B. Biomarkers: exceptional responders-discovering predictive biomarkers. *Nat Rev Clin Oncol.* 2015; 12(3):132–4. Epub 2015/02/18. <https://doi.org/10.1038/nrclinonc.2015.19> PMID: 25687910.
28. Ramalingam SS, Yang JC, Lee CK, Kurata T, Kim DW, John T, et al. Osimertinib As First-Line Treatment of EGFR Mutation-Positive Advanced Non-Small-Cell Lung Cancer. *J Clin Oncol.* 2018; 36(9):841–9. Epub 2017/08/26. <https://doi.org/10.1200/JCO.2017.74.7576> PMID: 28841389.
29. Shaw AT, Felip E, Bauer TM, Besse B, Navarro A, Postel-Vinay S, et al. Lorlatinib in non-small-cell lung cancer with ALK or ROS1 rearrangement: an international, multicentre, open-label, single-arm first-in-man phase 1 trial. *Lancet Oncol.* 2017; 18(12):1590–9. Epub 2017/10/28. [https://doi.org/10.1016/S1470-2045\(17\)30680-0](https://doi.org/10.1016/S1470-2045(17)30680-0) PMID: 29074098; PubMed Central PMCID: PMC5777233.
30. Drilon A, Rekhtman N, Arcila M, Wang L, Ni A, Albano M, et al. Cabozantinib in patients with advanced RET-rearranged non-small-cell lung cancer: an open-label, single-centre, phase 2, single-arm trial. *Lancet Oncol.* 2016; 17(12):1653–60. Epub 2016/11/09. [https://doi.org/10.1016/S1470-2045\(16\)30562-9](https://doi.org/10.1016/S1470-2045(16)30562-9) PMID: 27825636; PubMed Central PMCID: PMC5143197.
31. Hyman DM, Puzanov I, Subbiah V, Faris JE, Chau I, Blay JY, et al. Vemurafenib in Multiple Nonmelanoma Cancers with BRAF V600 Mutations. *N Engl J Med.* 2015; 373(8):726–36. Epub 2015/08/20. <https://doi.org/10.1056/NEJMoa1502309> PMID: 26287849; PubMed Central PMCID: PMC4971773.
32. Chuang JC, Stehr H, Liang Y, Das M, Huang J, Diehn M, et al. ERBB2-Mutated Metastatic Non-Small Cell Lung Cancer: Response and Resistance to Targeted Therapies. *Journal of Thoracic Oncology.* 2017; 12(5):833–42. <https://doi.org/10.1016/j.jtho.2017.01.023> PMID: 28167203
33. Aggarwal A, Lewison G, Idir S, Peters M, Aldige C, Boerckel W, et al. The State of Lung Cancer Research: A Global Analysis. *J Thorac Oncol.* 2016; 11(7):1040–50. <https://doi.org/10.1016/j.jtho.2016.03.010> PMID: 27013405.
34. Presley CJ, Tang D, Soulos PR, Chiang AC, Longtine JA, Adelson KB, et al. Association of Broad-Based Genomic Sequencing With Survival Among Patients With Advanced Non-Small Cell Lung Cancer in the Community Oncology Setting. *JAMA.* 2018; 320(5):469–77. Epub 2018/08/09. <https://doi.org/10.1001/jama.2018.9824> PMID: 30088010; PubMed Central PMCID: PMC6142984.
35. Kim H, Chae KJ, Yoon SH, Kim M, Keam B, Kim TM, et al. Repeat biopsy of patients with acquired resistance to EGFR TKIs: implications of biopsy-related factors on T790M mutation detection. *Eur Radiol.* 2018; 28(2):861–8. Epub 2017/08/09. <https://doi.org/10.1007/s00330-017-5006-6> PMID: 28786010.
36. Itchins M, Chia PL, Hayes SA, Howell VM, Gill AJ, Cooper WA, et al. Treatment of ALK-rearranged non-small cell lung cancer: A review of the landscape and approach to emerging patterns of treatment resistance in the Australian context. *Asia Pac J Clin Oncol.* 2017; 13 Suppl 3:3–13. Epub 2017/08/11. <https://doi.org/10.1111/ajco.12754> PMID: 28795492.
37. Ali SM, Hensing T, Schrock AB, Allen J, Sanford E, Gowen K, et al. Comprehensive Genomic Profiling Identifies a Subset of Crizotinib-Responsive ALK-Rearranged Non-Small Cell Lung Cancer Not

- Detected by Fluorescence In Situ Hybridization. *Oncologist*. 2016; 21(6):762–70. Epub 2016/06/02. <https://doi.org/10.1634/theoncologist.2015-0497> PMID: [27245569](#); PubMed Central PMCID: PMC4912370.
38. Aisner D, Sholl LM, Berry LD, Haura EB, Ramalingam SS, Glisson BS, et al. Effect of expanded genomic testing in lung adenocarcinoma (LUCA) on survival benefit: The Lung Cancer Mutation Consortium II (LCMC II) experience. *Journal of Clinical Oncology*. 2016; 34(15\_suppl):11510–. [https://doi.org/10.1200/JCO.2016.34.15\\_suppl.11510](https://doi.org/10.1200/JCO.2016.34.15_suppl.11510)
  39. Zhao H, Fan Y, Ma S, Song X, Han B, Cheng Y, et al. Final Overall Survival Results from a Phase III, Randomized, Placebo-Controlled, Parallel-Group Study of Gefitinib Versus Placebo as Maintenance Therapy in Patients with Locally Advanced or Metastatic Non–Small-Cell Lung Cancer (INFORM; C-TONG 0804). *Journal of Thoracic Oncology*. 2015; 10(4):655–64. <https://doi.org/10.1097/JTO.0000000000000445> PMID: [25546556](#)
  40. Hida T, Nokihara H, Kondo M, Kim YH, Azuma K, Seto T, et al. Alectinib versus crizotinib in patients with ALK-positive non-small-cell lung cancer (J-ALEX): an open-label, randomised phase 3 trial. *Lancet*. 2017; 390(10089):29–39. Epub 2017/05/16. [https://doi.org/10.1016/S0140-6736\(17\)30565-2](https://doi.org/10.1016/S0140-6736(17)30565-2) PMID: [28501140](#).
  41. Paik PK, Drilon A, Fan PD, Yu H, Rekhtman N, Ginsberg MS, et al. Response to MET inhibitors in patients with stage IV lung adenocarcinomas harboring MET mutations causing exon 14 skipping. *Cancer Discov*. 2015; 5(8):842–9. Epub 2015/05/15. <https://doi.org/10.1158/2159-8290.CD-14-1467> PMID: [25971939](#); PubMed Central PMCID: PMC4658654.
  42. Tannock IF, Hickman JA. Limits to Personalized Cancer Medicine. *N Engl J Med*. 2016; 375(13):1289–94. Epub 2016/09/30. <https://doi.org/10.1056/NEJMs1607705> PMID: [27682039](#).
  43. Prasad V. Perspective: The precision-oncology illusion. *Nature*. 2016; 537(7619):S63. Epub 2016/09/08. <https://doi.org/10.1038/537S63a> PMID: [27602743](#).
  44. Joyner MJ, Paneth N, Ioannidis JP. What Happens When Underperforming Big Ideas in Research Become Entrenched? *JAMA*. 2016; 316(13):1355–6. Epub 2016/07/29. <https://doi.org/10.1001/jama.2016.11076> PMID: [27467098](#).
  45. Gutierrez ME, Choi K, Lanman RB, Licitra EJ, Skrzypczak SM, Pe Benito R, et al. Genomic Profiling of Advanced Non–Small Cell Lung Cancer in Community Settings: Gaps and Opportunities. *Clinical Lung Cancer*. 2017; 18(6):651–9. <https://doi.org/10.1016/j.clcc.2017.04.004>
  46. Li Y, Bare LA, Bender RA, Sninsky JJ, Wilson LS, Devlin JJ, et al. Cost Effectiveness of Sequencing 34 Cancer-Associated Genes as an Aid for Treatment Selection in Patients with Metastatic Melanoma. *Mol Diagn Ther*. 2015; 19(3):169–77. Epub 2015/05/01. <https://doi.org/10.1007/s40291-015-0140-9> PMID: [25926090](#); PubMed Central PMCID: PMC4469775.
  47. Gallego CJ, Shirts BH, Bennette CS, Guzauskas G, Amendola LM, Horike-Pyne M, et al. Next-Generation Sequencing Panels for the Diagnosis of Colorectal Cancer and Polyposis Syndromes: A Cost-Effectiveness Analysis. *J Clin Oncol*. 2015; 33(18):2084–91. Epub 2015/05/06. <https://doi.org/10.1200/JCO.2014.59.3665> PMID: [25940718](#); PubMed Central PMCID: PMC4461806.
  48. Haslem DS, Van Norman SB, Fulde G, Knighton AJ, Belnap T, Butler AM, et al. A Retrospective Analysis of Precision Medicine Outcomes in Patients With Advanced Cancer Reveals Improved Progression-Free Survival Without Increased Health Care Costs. *J Oncol Pract*. 2017; 13(2):e108–e19. Epub 2016/09/08. <https://doi.org/10.1200/JOP.2016.011486> PMID: [27601506](#); PubMed Central PMCID: PMC5455156.
  49. Gong J, Pan K, Fakih M, Pal S, Salgia R. Value-based genomics. *Oncotarget*. 2018; 9(21):15792–815. Epub 2018/04/13. <https://doi.org/10.18632/oncotarget.24353> PMID: [29644010](#); PubMed Central PMCID: PMC5884665.
  50. Janku F, Berry DA, Gong J, Parsons HA, Stewart DJ, Kurzrock R. Outcomes of phase II clinical trials with single-agent therapies in advanced/metastatic non-small cell lung cancer published between 2000 and 2009. *Clinical cancer research: an official journal of the American Association for Cancer Research*. 2012; 18(22):6356–63. Epub 2012/09/28. <https://doi.org/10.1158/1078-0432.CCR-12-0178> PMID: [23014530](#).
  51. Jardim DL, Schwaederle M, Wei C, Lee JJ, Hong DS, Eggermont AM, et al. Impact of a Biomarker-Based Strategy on Oncology Drug Development: A Meta-analysis of Clinical Trials Leading to FDA Approval. *J Natl Cancer Inst*. 2015; 107(11). Epub 2015/09/18. <https://doi.org/10.1093/jnci/djv253> PMID: [26378224](#); PubMed Central PMCID: PMC4857149.
  52. Schwaederle M, Zhao M, Lee JJ, Eggermont AM, Schilsky RL, Mendelsohn J, et al. Impact of Precision Medicine in Diverse Cancers: A Meta-Analysis of Phase II Clinical Trials. *J Clin Oncol*. 2015; 33(32):3817–25. Epub 2015/08/26. <https://doi.org/10.1200/JCO.2015.61.5997> PMID: [26304871](#); PubMed Central PMCID: PMC4737863.



53. Schwaederle M, Zhao M, Lee JJ, Lazar V, Leyland-Jones B, Schilsky RL, et al. Association of Biomarker-Based Treatment Strategies With Response Rates and Progression-Free Survival in Refractory Malignant Neoplasms: A Meta-analysis. *JAMA Oncol.* 2016; 2(11):1452–9. Epub 2016/06/09. <https://doi.org/10.1001/jamaoncol.2016.2129> PMID: [27273579](#).
54. Wang Z, Zhu D, Lu B, Liu G, Xu T. P2.01–102 Comprehensive Next-Generation Sequencing Guided Targeted Therapies Improve Clinical Outcomes of Lung Cancer Patients. *Journal of Thoracic Oncology.* 2018; 13(10):S704. <https://doi.org/10.1016/j.jtho.2018.08.1157>
55. Lim C, Tsao MS, Le LW, Shepherd FA, Feld R, Burkes RL, et al. Biomarker testing and time to treatment decision in patients with advanced nonsmall-cell lung cancer. *Ann Oncol.* 2015; 26(7):1415–21. Epub 2015/04/30. <https://doi.org/10.1093/annonc/mdv208> PMID: [25922063](#).
56. Spicer J, Tischer B, Peters M. EGFR mutation testing and oncologist treatment choice in advanced NSCLC: global trends and differences. *Ann Oncol.* 2015; 26(suppl 1):i57–161.
57. Oncology ASOC. The State of Cancer Care in America, 2016: A Report by the American Society of Clinical Oncology. *Journal of Oncology Practice.* 2016; 12(4):339–83. <https://doi.org/10.1200/JOP.2015.010462> PMID: [26979926](#).
58. Oncology TAsOC. The State of Cancer Care in America, 2017: A Report by the American Society of Clinical Oncology. *Journal of Oncology Practice.* 2017; 13(4):e353–e94. <https://doi.org/10.1200/JOP.2016.020743> PMID: [28326862](#).
59. Mason C, Ellis PG, Lokay K, Barry A, Dickson N, Page R, et al. Patterns of Biomarker Testing Rates and Appropriate Use of Targeted Therapy in the First-Line, Metastatic Non-Small Cell Lung Cancer Treatment Setting. *J Clin Pathways.* 4(1):49–54.
60. Li SD, Ma M, Li H, Waluszko A, Sidorenko T, Schadt EE, et al. Cancer gene profiling in non-small cell lung cancers reveals activating mutations in JAK2 and JAK3 with therapeutic implications. *Genome Med.* 2017; 9(1):89. Epub 2017/10/31. <https://doi.org/10.1186/s13073-017-0478-1> PMID: [29082853](#); PubMed Central PMCID: [PMC5662094](#).
61. Li C, Fang R, Sun Y, Han X, Li F, Gao B, et al. Spectrum of oncogenic driver mutations in lung adenocarcinomas from East Asian never smokers. *PLoS One.* 2011; 6(11):e28204. Epub 2011/12/06. <https://doi.org/10.1371/journal.pone.0028204> PMID: [22140546](#); PubMed Central PMCID: [PMC3227646](#).
62. Helming KC, Wang X, Wilson BG, Vazquez F, Haswell JR, Manchester HE, et al. ARID1B is a specific vulnerability in ARID1A-mutant cancers. *Nat Med.* 2014; 20(3):251–4. Epub 2014/02/25. <https://doi.org/10.1038/nm.3480> PMID: [24562383](#); PubMed Central PMCID: [PMC3954704](#).
63. Aso T, Uozaki H, Morita S, Kumagai A, Watanabe M. Loss of ARID1A, ARID1B, and ARID2 Expression During Progression of Gastric Cancer. *Anticancer Res.* 2015; 35(12):6819–27. Epub 2015/12/08. PMID: [26637902](#).
64. Cornen S, Adelaide J, Bertucci F, Finetti P, Guille A, Birnbaum DJ, et al. Mutations and deletions of ARID1A in breast tumors. *Oncogene.* 2012; 31(38):4255–6. Epub 2012/01/18. <https://doi.org/10.1038/onc.2011.598> PMID: [22249247](#).
65. Agrawal N, Jiao Y, Bettgowda C, Hutfless SM, Wang Y, David S, et al. Comparative genomic analysis of esophageal adenocarcinoma and squamous cell carcinoma. *Cancer Discov.* 2012; 2(10):899–905. Epub 2012/08/11. <https://doi.org/10.1158/2159-8290.CD-12-0189> PMID: [22877736](#); PubMed Central PMCID: [PMC3473124](#).
66. Streppel MM, Lata S, DelaBastide M, Montgomery EA, Wang JS, Canto MI, et al. Next-generation sequencing of endoscopic biopsies identifies ARID1A as a tumor-suppressor gene in Barrett's esophagus. *Oncogene.* 2014; 33(3):347–57. Epub 2013/01/16. <https://doi.org/10.1038/onc.2012.586> PMID: [23318448](#); PubMed Central PMCID: [PMC3805724](#).
67. Kadoch C, Hargreaves DC, Hodges C, Elias L, Ho L, Ranish J, et al. Proteomic and bioinformatic analysis of mammalian SWI/SNF complexes identifies extensive roles in human malignancy. *Nat Genet.* 2013; 45(6):592–601. Epub 2013/05/07. <https://doi.org/10.1038/ng.2628> PMID: [23644491](#); PubMed Central PMCID: [PMC3667980](#).
68. Huang HT, Chen SM, Pan LB, Yao J, Ma HT. Loss of function of SWI/SNF chromatin remodeling genes leads to genome instability of human lung cancer. *Oncol Rep.* 2015; 33(1):283–91. Epub 2014/11/06. <https://doi.org/10.3892/or.2014.3584> PMID: [25370573](#).
69. Yoshimoto T, Matsubara D, Nakano T, Tamura T, Endo S, Sugiyama Y, et al. Frequent loss of the expression of multiple subunits of the SWI/SNF complex in large cell carcinoma and pleomorphic carcinoma of the lung. *Pathol Int.* 2015; 65(11):595–602. Epub 2015/09/09. <https://doi.org/10.1111/pin.12350> PMID: [26345631](#).
70. Watanabe R, Ui A, Kanno S, Ogiwara H, Nagase T, Kohno T, et al. SWI/SNF factors required for cellular resistance to DNA damage include ARID1A and ARID1B and show interdependent protein stability. *Cancer Res.* 2014; 74(9):2465–75. Epub 2014/05/03. <https://doi.org/10.1158/0008-5472.CAN-13-3608> PMID: [24788099](#).

71. Natarajan TG, Kallakury BV, Sheehan CE, Bartlett MB, Ganesan N, Preet A, et al. Epigenetic regulator MLL2 shows altered expression in cancer cell lines and tumors from human breast and colon. *Cancer Cell Int.* 2010; 10:13. Epub 2010/05/04. <https://doi.org/10.1186/1475-2867-10-13> PMID: [20433758](#); PubMed Central PMCID: PMC2878298.
72. Daniel DC. Highlight: BRCA1 and BRCA2 proteins in breast cancer. *Microsc Res Tech.* 2002; 59(1):68–83. Epub 2002/09/21. <https://doi.org/10.1002/jemt.10178> PMID: [12242698](#).
73. Yuan Y, Yost SE, Yuan YC, Solomon NM, Mambetsariev I, Pal S, et al. Genomic mutation-driven metastatic breast cancer therapy: a single center experience. *Oncotarget.* 2017; 8(16):26414–23. Epub 2017/01/07. <https://doi.org/10.18632/oncotarget.14476> PMID: [28061482](#); PubMed Central PMCID: PMC5432268.