

NRP2 transcriptionally regulates its downstream effector WDFY1

Samikshan Dutta^{1,§}, Sohini Roy¹, Navatha S Polavaram¹, Gustavo B. Baretton², Michael H. Muders^{1,2}, Surinder Batra^{1,3}, Kaustubh Datta^{1,3,§}

¹Department of Biochemistry and Molecular Biology, University of Nebraska Medical Center, Omaha, Nebraska

²Institute of Pathology, University Hospital Carl Gustav Carus, University of Technology of Dresden

³Fred & Pamela Buffett Cancer Center, Eppley Institute for Research in Cancer, Omaha, Nebraska

Running Title: NRP2 Regulates WDFY1 transcription

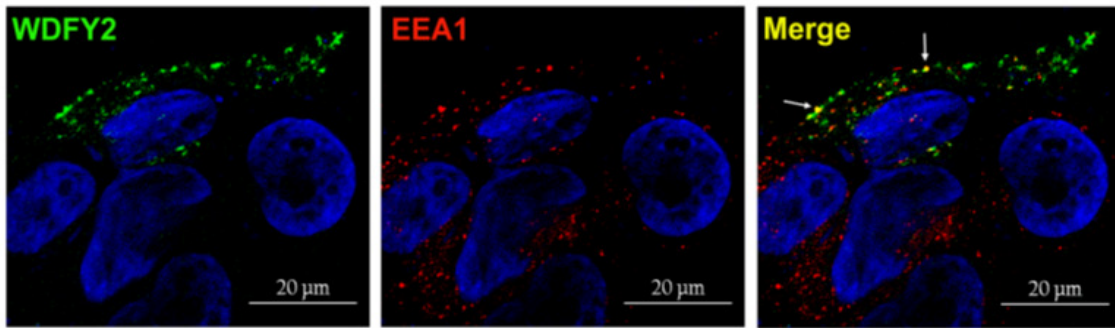
§Corresponding Author:

1. Kaustubh Datta, Ph.D.
Department Biochemistry and Molecular Biology, University of Nebraska Medical Center,
Durham Research Center II, Room 4022
985870 Nebraska Medical Center
Omaha, NE 68198-5870
Tel: (402) 559-7404
Fax: (402) 559-6650
Email: kaustubh.datta@unmc.edu
2. Samikshan Dutta, Ph.D
Department Biochemistry and Molecular Biology, University of Nebraska Medical Center,
Durham Research Center II, Room 4022
985870 Nebraska Medical Center
Omaha, NE 68198-5870
Tel: (402) 559-7404
Fax: (402) 559-6650
Email: samikshan.dutta@unmc.edu

Keywords: WDFY1, NRP2, FAC1,

Conflicts of Interest: The authors have no conflicts of interest to declare.

Abstract



Supplementary Fig 1

Supplementary Fig 1. WDFY2 partially co-localizes with EEA1 positive vesicles: Immunostaining of WDFY2 (Green) and EEA1 (Red) following depletion of NRP2 and over-expressing WDFY2-GFP plasmid in PC3 cells. Nucleus was stained with DAPI. Scale Bar indicates 20 μ m.

Supplementary materials and methods:

Confocal Microscopy: PC3 cell were grown on poly-D-lysine coated coverslips. After 48hrs of transfection, cells were fixed with 4% para-formaldehyde followed by blocking (1% BSA in PBS and 0.5% saponin) for 1 hour. Next, cells were incubated with respective 1^o antibodies for overnight at 4°C followed by secondary antibodies for 1 hour. Zeiss 710 confocal microscopy was used for capturing the images.