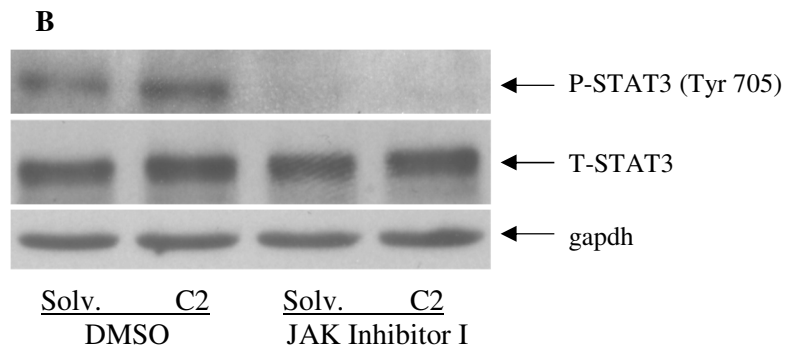
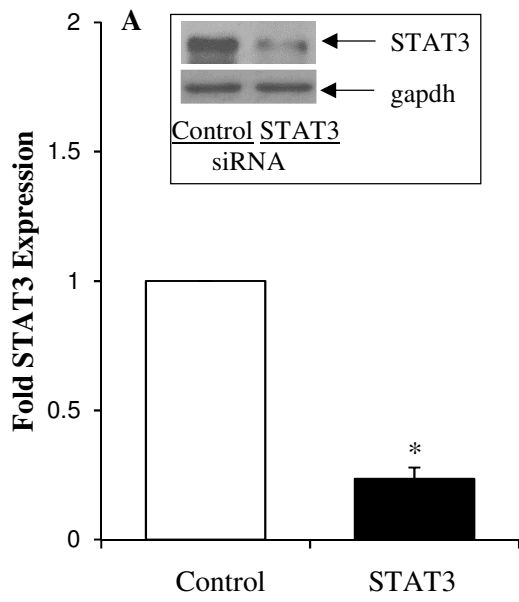


Supporting Information

Legends to Supplementary Figures

S1 Fig. STAT3 protein and mRNA expression, and ceramide-induced activation of STAT3 were inhibited by STAT3 siRNA and JAK inhibitor I, respectively. (A) STAT3 mRNA and protein (inset) levels in HepG2 cells transfected with STAT3 siRNA or control siRNA were determined by qPCR or western blotting, respectively. Asterisks indicate statistical significance ($P < 0.05$). (B) Cell lysates prepared from HepG2 cells, treated with 60 μ M C2 ceramide or solvent (solv.) in the presence of 5 μ M JAK inhibitor I or DMSO as control, were used for western blotting to detect total (T-STAT3) or tyrosine-phosphorylated (P-STAT3) STAT3 protein levels using specific antibodies. An antibody for gapdh was used as control for protein loading.



S1 Fig.